

**West of England Partnership
Joint Scrutiny
3 July 2009**

Joint Local Transport Plan 3

Purpose of report

1. To inform Members of and seek views on proposals to produce the replacement Joint Local Transport Plan.

Background

2. The current Joint Local Transport Plan (JLTP) covers the period 2006 to 2011. It sets out the West of England's approach to transport based around the four shared priorities of congestion, accessibility, road safety and air quality.
3. The replacement Plan, whilst being the second joint plan, will be the third Local Transport Plan produced by the West of England councils. For this reason it is referred to as Joint Local Transport Plan 3 (JLTP3).
4. Draft guidance issued by the Department for Transport (DfT) in December 2008 will be used to support the preparation of JLTP3. The guidance's aim is to "enable every authority to prepare a Plan which best meets its own individual needs." A report on the draft guidance was presented to the 13 March 2009 Joint Scrutiny meeting.
5. JLTP3 must be submitted to the DfT no later than 31 March 2011.
6. The Local Transport Act 2008 retains the statutory requirement to produce and review Local Transport Plans.

Outline Structure

7. JLTP3 will be in two parts:
 - a) Strategy
8. The Strategy will take a longer term view beyond the current five year time period of the JLTP. It will include: Vision, Objectives/goals, problems/challenges, options tested, consultation and the preferred strategy. JLTP3 will be based around the five key goals from the DfT's "Delivering a Sustainable Transport Strategy" (DaSTS) of:
 - Reduce carbon emissions
 - Support economic growth
 - Promote equality of opportunity
 - Contribute to better safety, security and health
 - Improve quality of life and a healthy natural environment.

b) Delivery Plan

9. The Delivery Plan will bring together the four councils' work programmes for implementing schemes over a three to five year time period. It will demonstrate how the plan delivers the Strategy, value for money and impacts on National Indicators.
10. Both the Strategy and Delivery Plan will be supported by supplementary documents covering for example policy areas such as walking, parking, buses, road safety, cycling and rail.
11. In line with the draft guidance the aim is to produce a clear, concise and accessible Strategy and Delivery Plan.

Key Areas of Work

12. These include:
 - Consultation – events, key stakeholders, documents/leaflets
 - Strategic Environmental Assessment – EC requirement
 - Equalities Impact Assessment – Government requirement
 - Habitats Regulation Assessment (if required)
 - Option testing – need to demonstrate affordability, deliverability and risk
 - Climate Change – impact of JLTP3 on carbon emissions
 - Alignment with other strategies – e.g. Regional Spatial Strategy, Local Development Frameworks, Local Strategic Partnerships, Multi/Local Area Agreements
 - Partnership working – e.g. Highways Agency, South West Councils, Primary Care Trusts, rail and bus operators
 - Targets and monitoring – based around National Indicators and local targets

Governance

13. The governance and programme management arrangements for JLTP3 are shown in Figures 1.1 and 1.2. At the highest level governance rests with the four councils supported by the challenge and advisory roles provided by Joint Scrutiny and the West of England Partnership. The councils set the framework for policy and scheme development. The Joint Transport Executive Committee enacts this framework.
14. These structures were endorsed by the Joint Transport Executive Committee (JTEC) on 24/04/09 and are therefore subject to scrutiny by the Joint Scrutiny and the West of England Partnership both of which have cross-party political representation.

Figure 1.1: West of England Governance and Delivery Arrangements for Transport Major Schemes

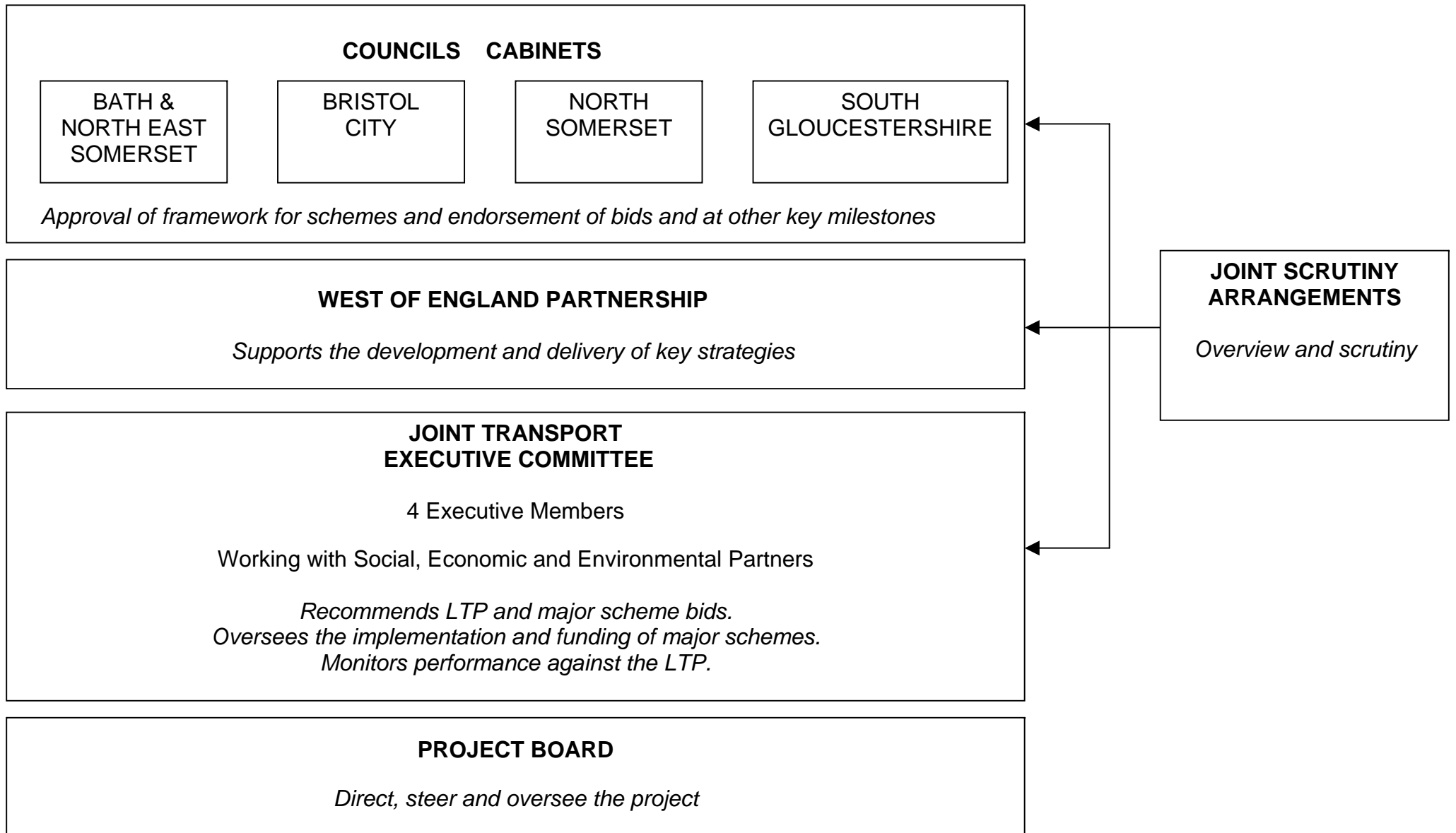
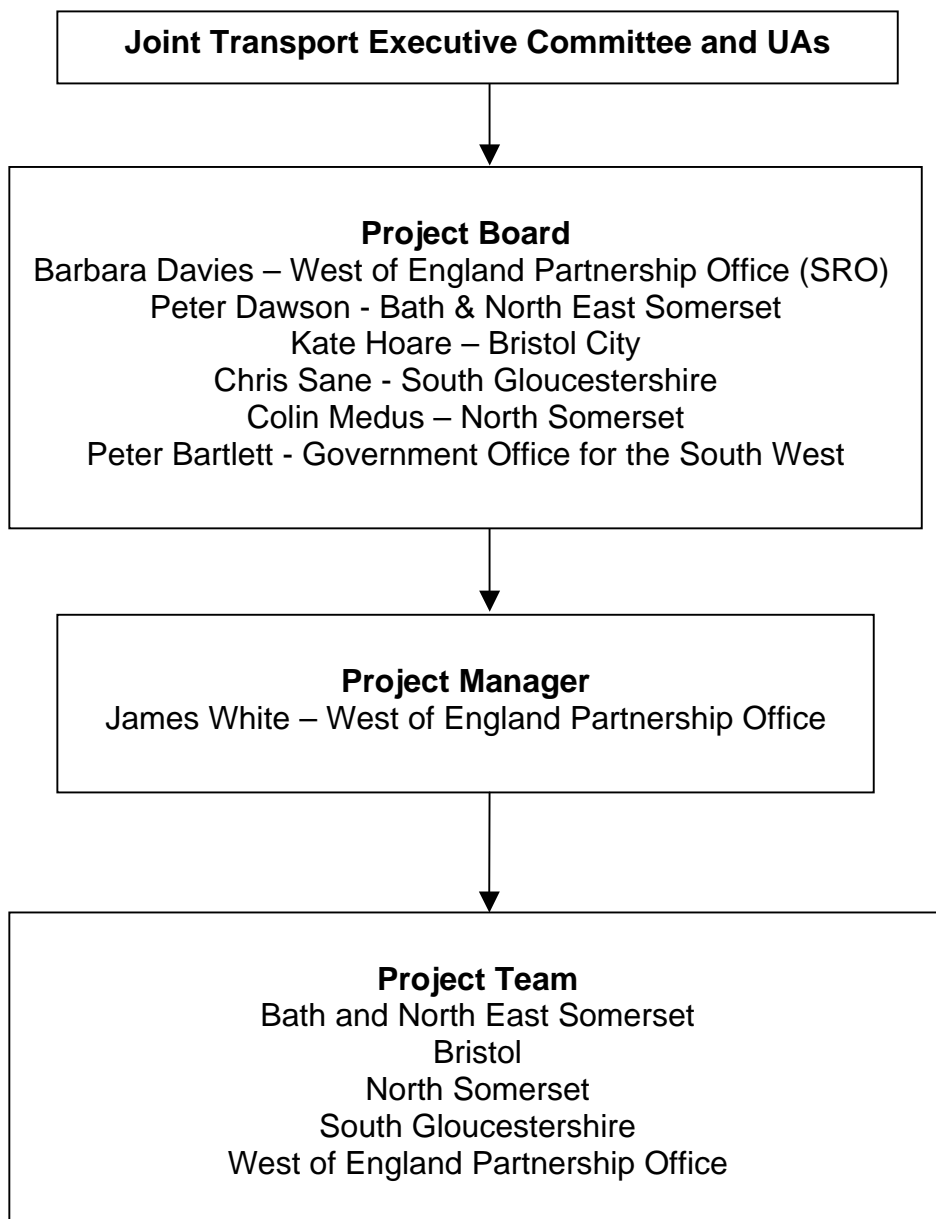


Figure 1.2 West of England Project Management Structure for JTLP3

| | |
|------------------------------|---|
| Scheme or Project: | Local Transport Plan 3 |
| Current Status: | Work programme under preparation. |
| Work Programmed for 2009/10: | Vision shaping and options Autumn 2009. High level option consultation Spring 2010. |
| Next DfT Milestone: | Submission March 2011. |

Governance and Project Management Arrangements:



Programme

15. A draft programme for producing the JLTP3 is set out below.

| Date | JLTP3 Milestone |
|--------------------------|--|
| 16 July 2009 | Report on outline structure to Joint Transport Executive Committee |
| October/November 2009 | Vision shaping with key stakeholders Consultation on SEA scoping study (Stage A) |
| February 2010 | Draft Strategy produced for key stakeholder consultation |
| February – April 2010 | Testing and consultation on options SEA option testing (Stage B), EIA, HRA (if required) |
| June 2010 | Delivery Plan produced Joint Transport Forum |
| July to Sept 2010 | Draft final Strategy, Delivery Plan and Supporting Documents consultation. SEA Environment Report consultation (Stage C). |
| October to December 2010 | Strategy, Supporting Documents and Delivery Plan revised |
| January 2011 | JLTP approved by Joint Transport Executive Committee and four councils (if required). |
| March 2011 | Submit JLTP3 to DfT SEA Statement (Stage D) |
| April 2011 | JLTP3 comes into force |

Role of Joint Scrutiny

16. It is envisaged that Joint Scrutiny will be involved throughout the JLTP3 process providing an advisory and scrutinising role.

Recommendation

17. Scrutiny's views on the proposals for JLTP3 are requested.

Officer presenting the report: James White, West of England Partnership

S:\WEP\WEP meetings\Scrutiny\3 July 2009\Item x Joint Local Transport Plan 3 3 July 2009.doc