



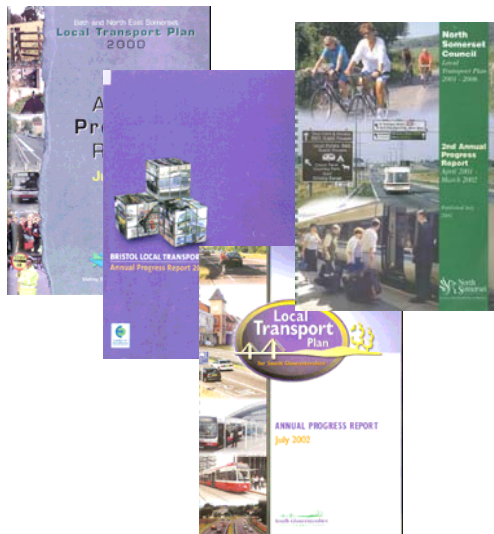
# West of England Partnership

Bath & North East  
Somerset Council



## Agenda Item 6 Joint Local Transport Plan 3

# Which Local Transport Plan?



LTP1  
2000 - 2006



JLTP  
LTP2  
2006 - 2011



JLTP3  
LTP3  
2011-2026



# Key goals

- Tackle climate change
- Support economic growth
- Promote equality of opportunity
- Better safety, security and health
- Improve quality of life

# Outline Structure

- Strategy
  - Vision, objectives, goals
  - Problems/challenges
  - Options, consultation, preferred Strategy
- Delivery Plan
  - Implementing schemes 3 to 5 years
- Supplementary Documents
  - Public transport, cycling, walking, parking, road safety



West of  
England  
Partnership

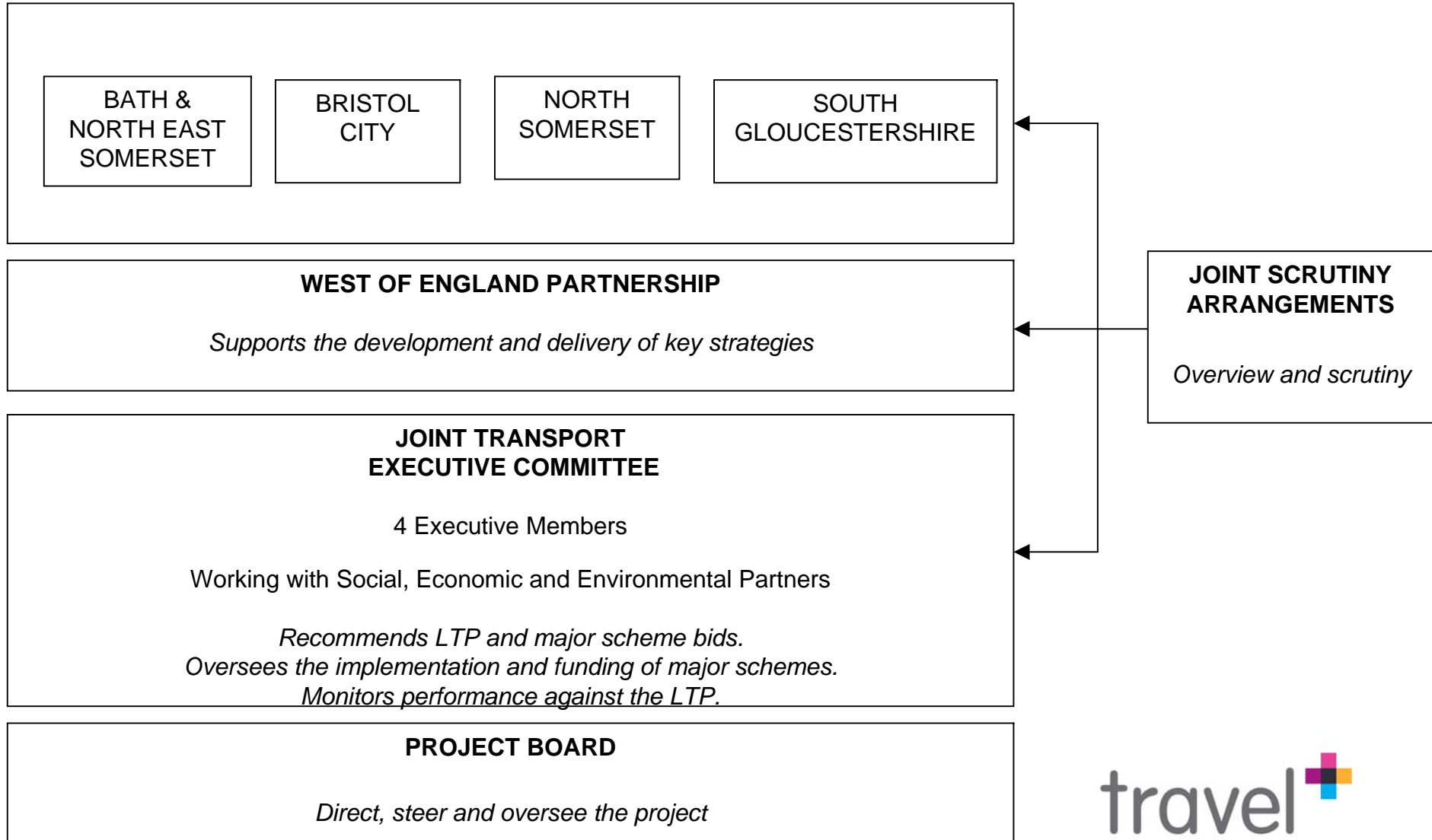
travel 

# Key areas of work

- Consultation
- Option Testing
- Strategic Environment Assessment
- Equalities Impact Assessment
- Alignment other strategies
- Partnership working
- Targets and monitoring



# Governance



# Workstreams

- WS1 Consultation – Bristol City
- WS2 Strategy/Supplementary Documents – South Gloucestershire
- WS3 Delivery Plan – North Somerset
- WS4 SEA, option testing – Bath and North East Somerset
- Project Management – West of England



# Resources

Work area	BANES	BCC	NSC	SGC	Total
Consultation	£16,000	£16,000	£16,000	£16,000	£65,000
SEA, EIA, HRA, climate change	£12,500 to £25,000	£12,500 to £25,000	£12,500 to £25,000	£12,500 to £25,000	£50,000 to £100,000
Staff (Workstreams)	1 FTE	1 FTE	1 FTE	1 FTE	4 FTE
Additional staff	1 FTE	1 FTE	1 FTE	1 FTE	4 FTE



West of  
England  
Partnership

travel 

# Programme

<b>Date</b>	<b>JLTP3 Milestone</b>
16/07/09	Joint Transport Executive Committee
Oct/Nov 2009	Vision shaping with key stakeholders Consultation on SEA scoping study
Feb 2010	Testing and consultation on options SEA option testing
Jun 2010	Joint Transport Forum
Jul/Sept 2010	Draft final Strategy, Delivery Plan Supporting Documents and SEA consultation
Oct/Dec 2010	Strategy, Supporting Documents, Delivery Plan revised
Jan 2011	Approval by four councils
Mar 2011	Submit JLTP3 to DfT



# West of England Partnership

Bath & North East  
Somerset Council



## Agenda Item 8 Southmead Future Accessibility Study

# Background

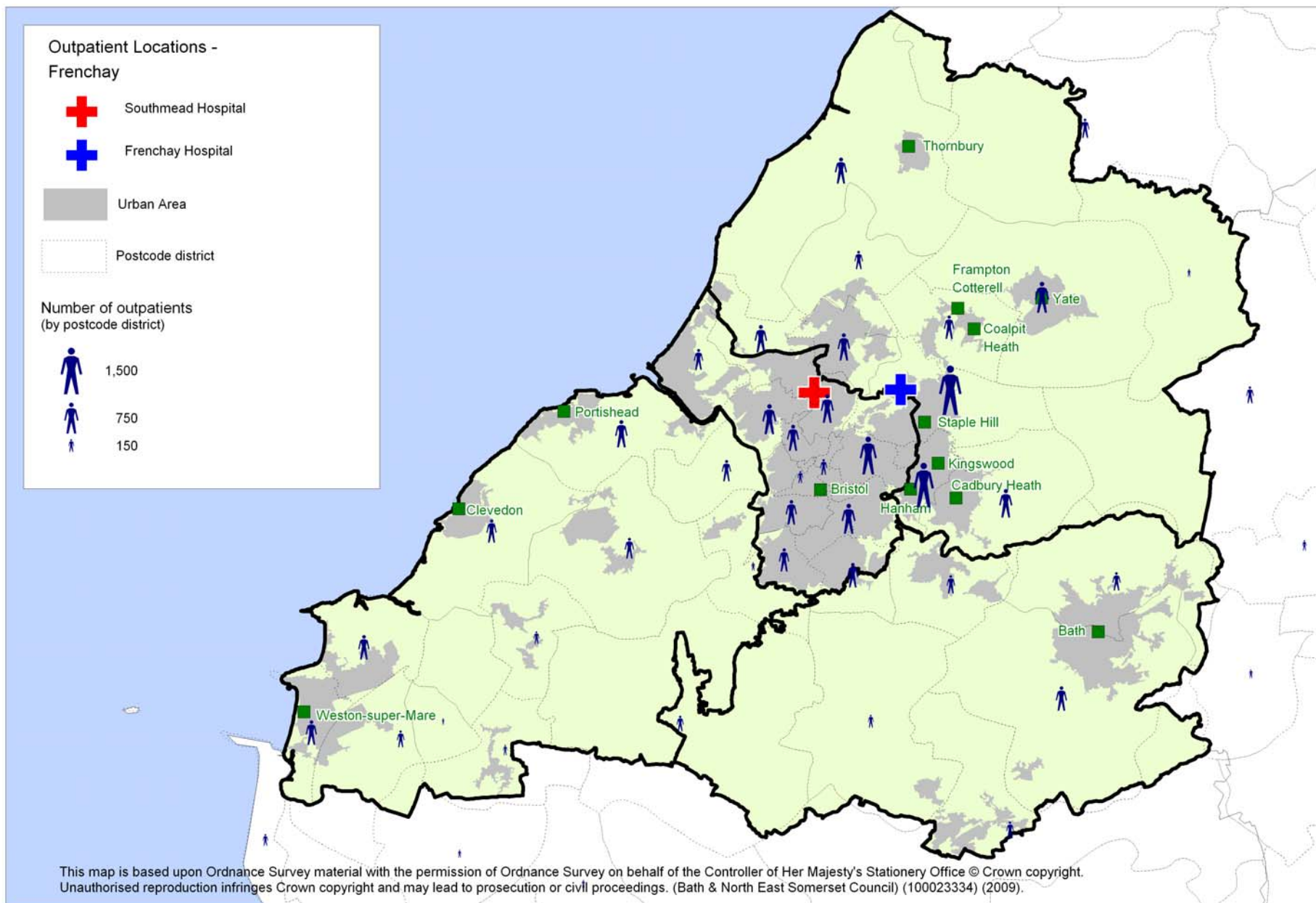
- Redevelopment of Southmead and Frenchay Hospitals
- 6,500 staff
- £1.5m public transport support
- Study to identify “gaps” and measures



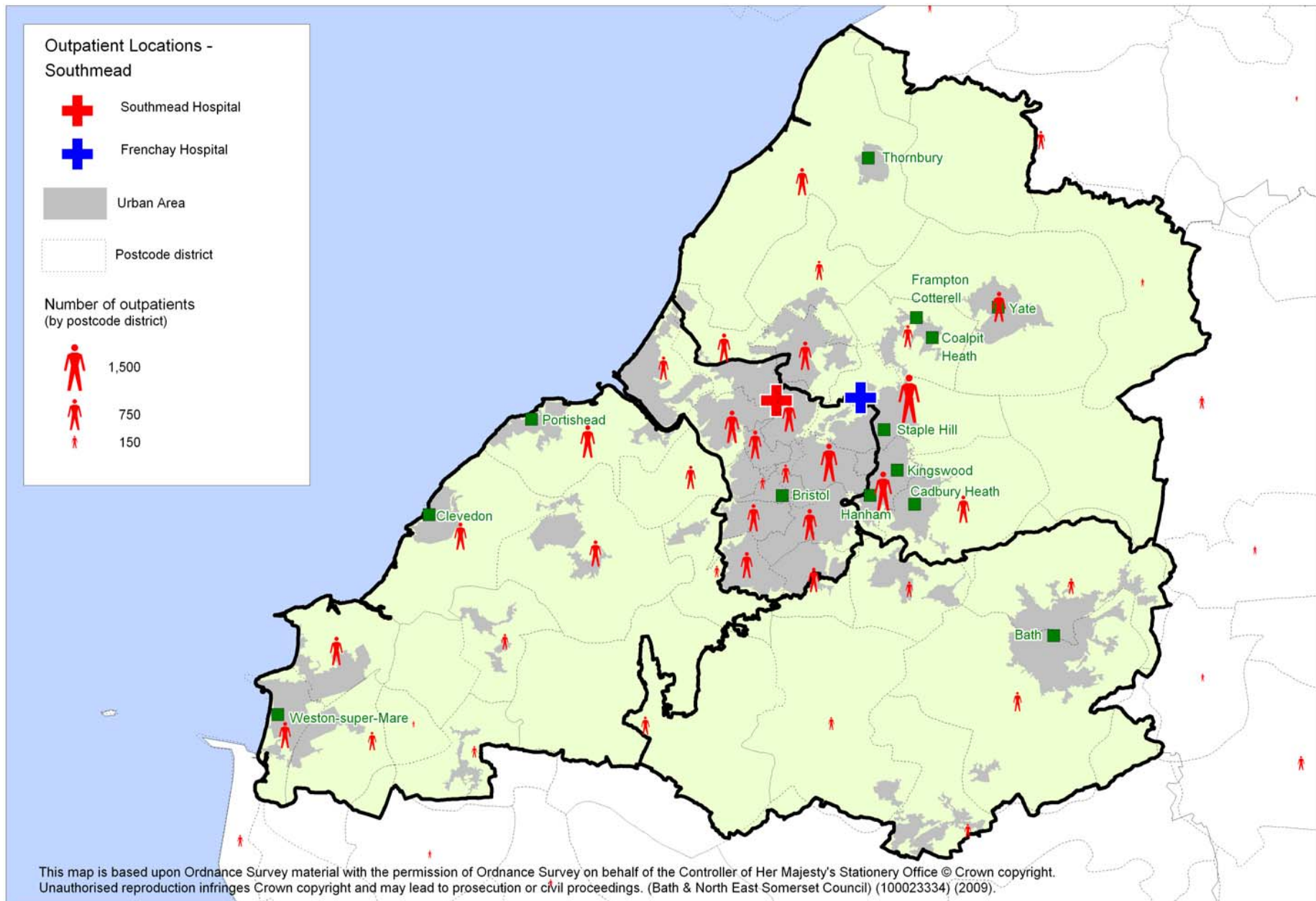
# Study

- Patients and staff travelling from
- Current public transport provision
- Levels of accessibility
- Future schemes
- Options for public transport improvements

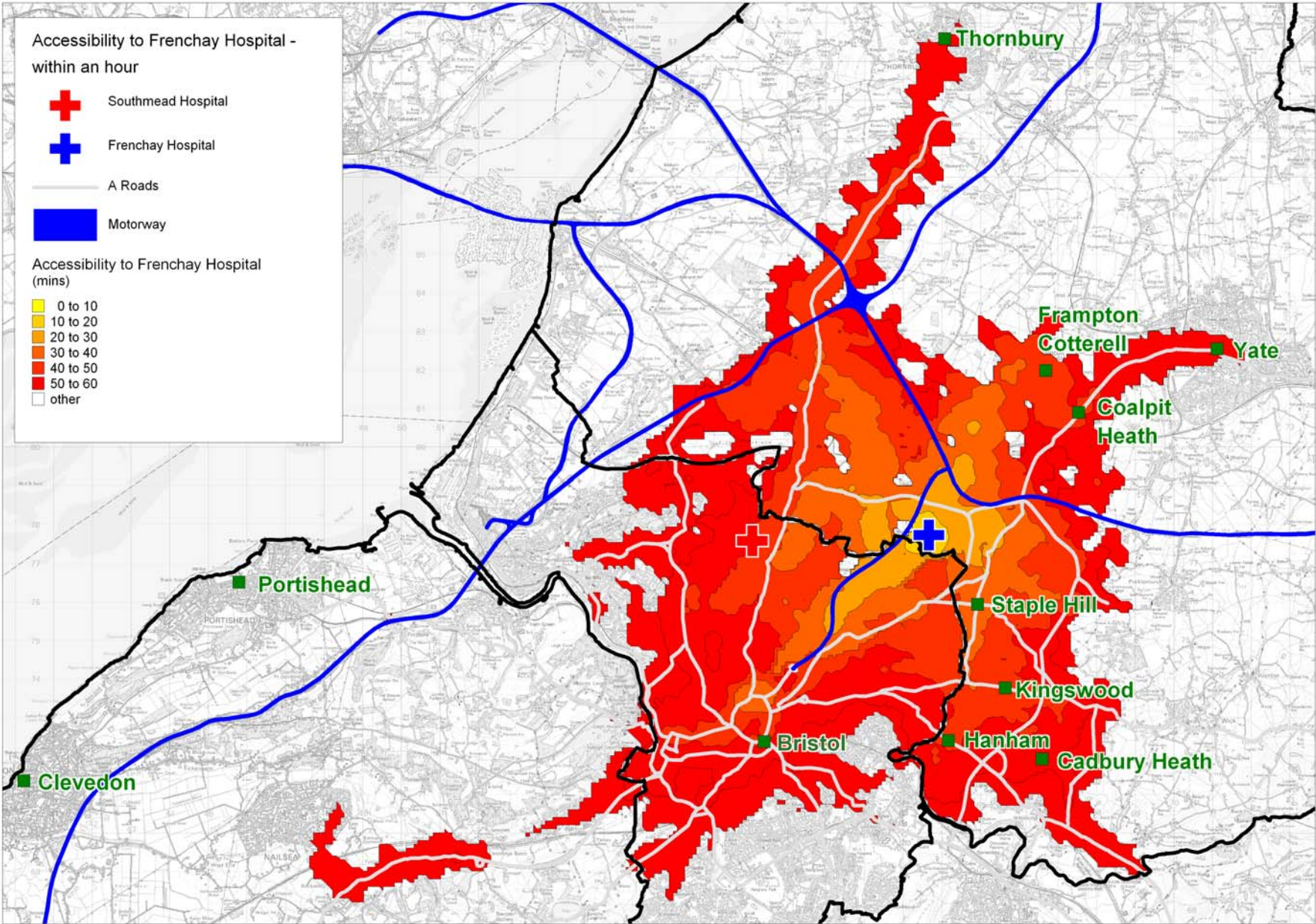
# Outpatients - Frenchay



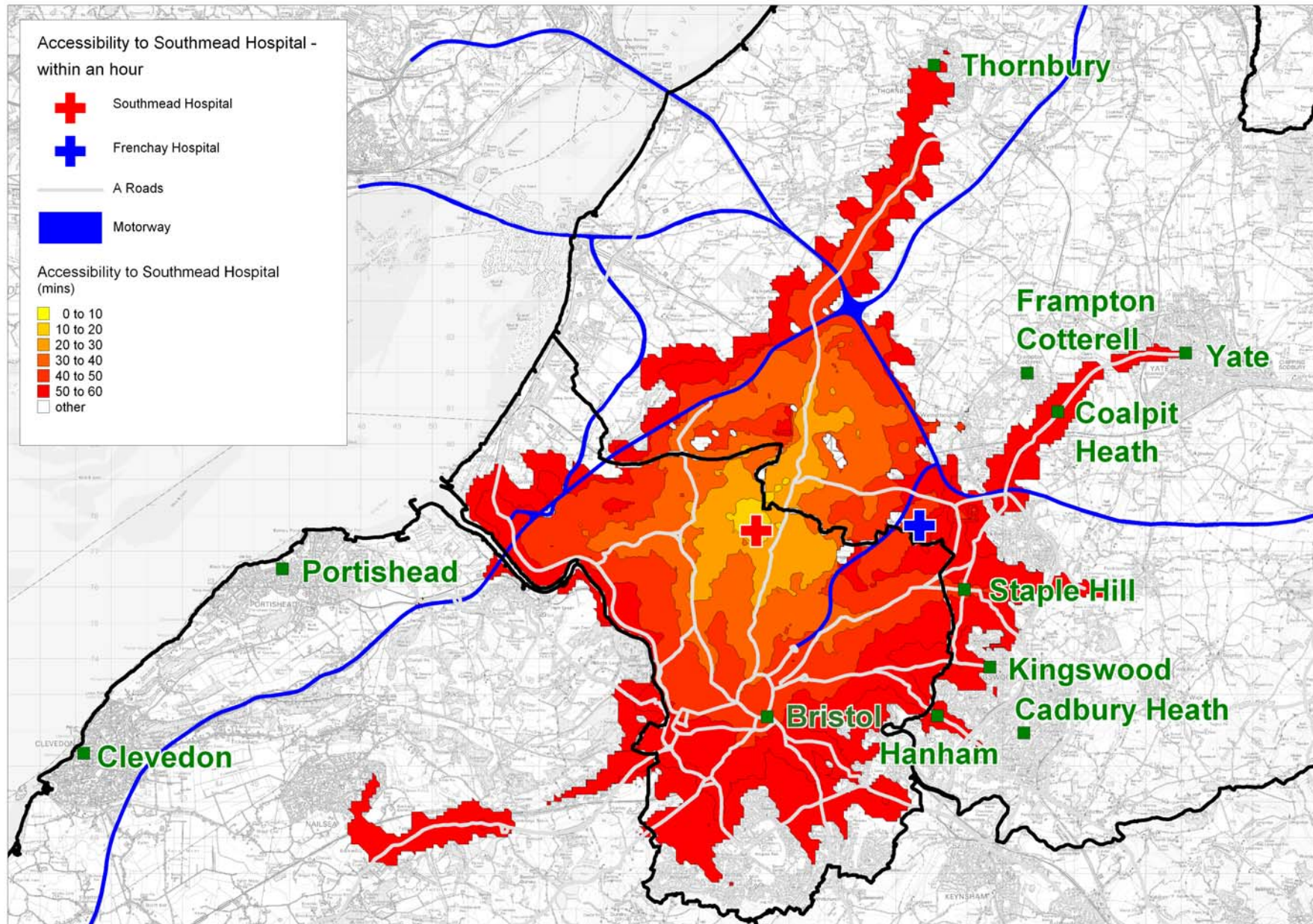
# Outpatients - Southmead



# Frenchay accessibility



# Southmead accessibility



# Potential Options

- High frequency orbital bus route with interchanges at UWE, Frenchay, Parkway
- Hanham and Cadbury Heath, Yate and Coalpit Heath and Thornbury services
- M32 park and ride link
- Community Transport
- Demand responsive local bus services

# Next Steps

- Final report to JTEC
- Consultation
- Joint Scrutiny
- Views?

