

# West of England Partnership First Great Western Update

November 2009

Julian Crow  
Regional General Manager  
West of England

# Quick Summary!

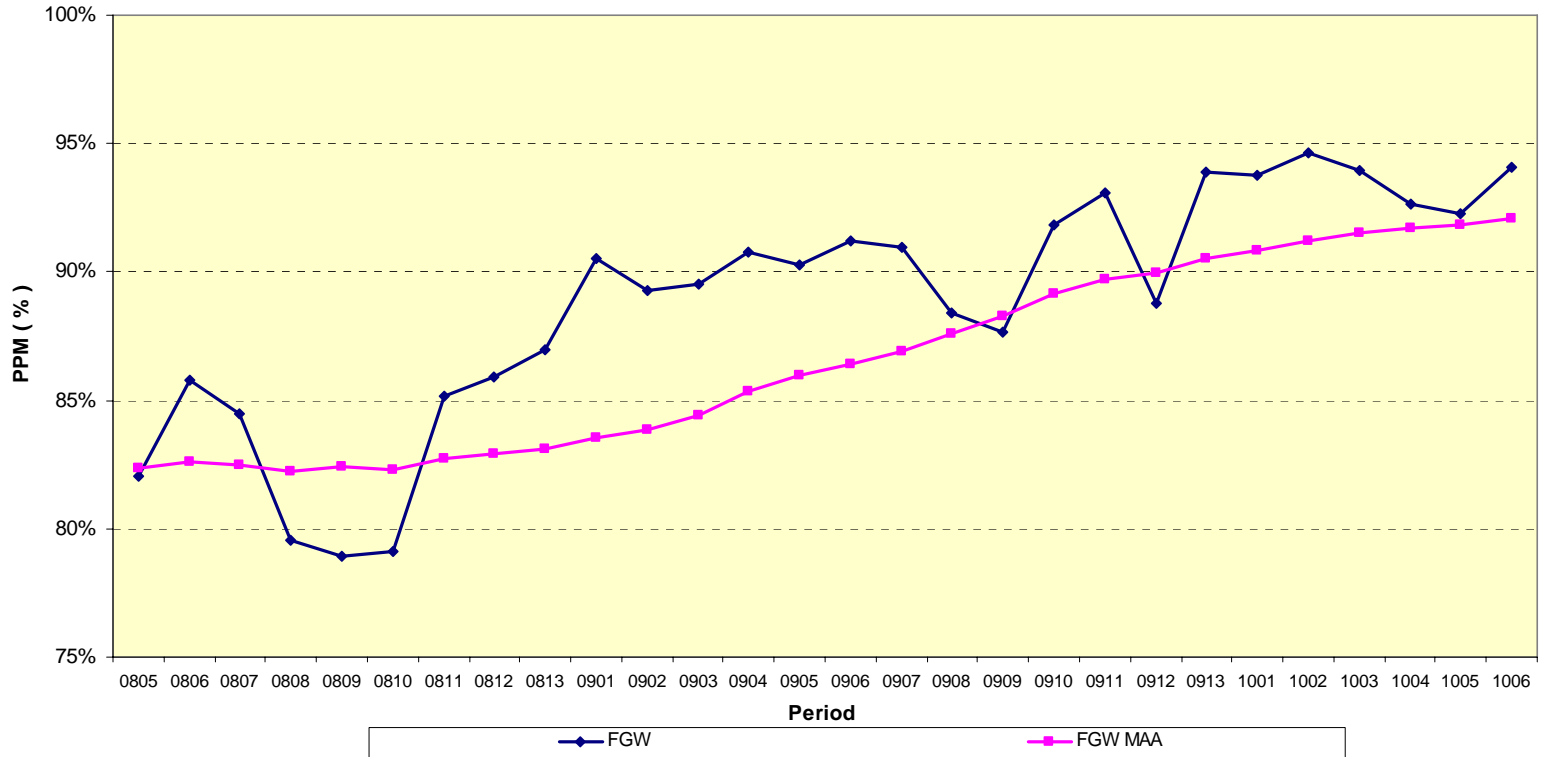
- Performance remains at an all-time high
- Passenger numbers on local services remain buoyant
- Focus on delivering peak capacity
- Rolling stock position becoming clearer
- A challenging time, financially

## Performance – Period 6

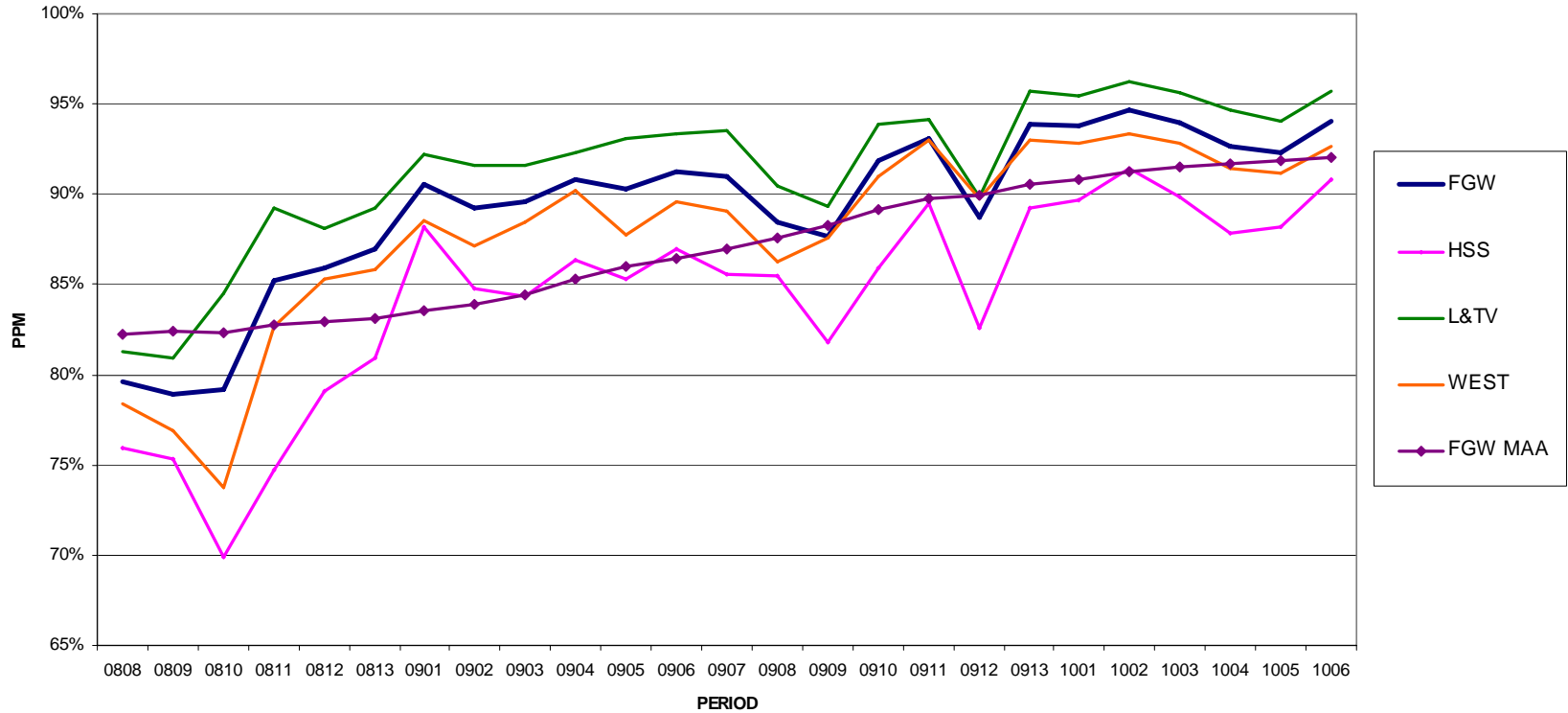
---

- Continued performance improvement
- Period PPM for FGW overall was **94%**
- High Speed Services scored **90.8%**
- West services scored **92.6%**
- MAA for FGW is now 92.1%

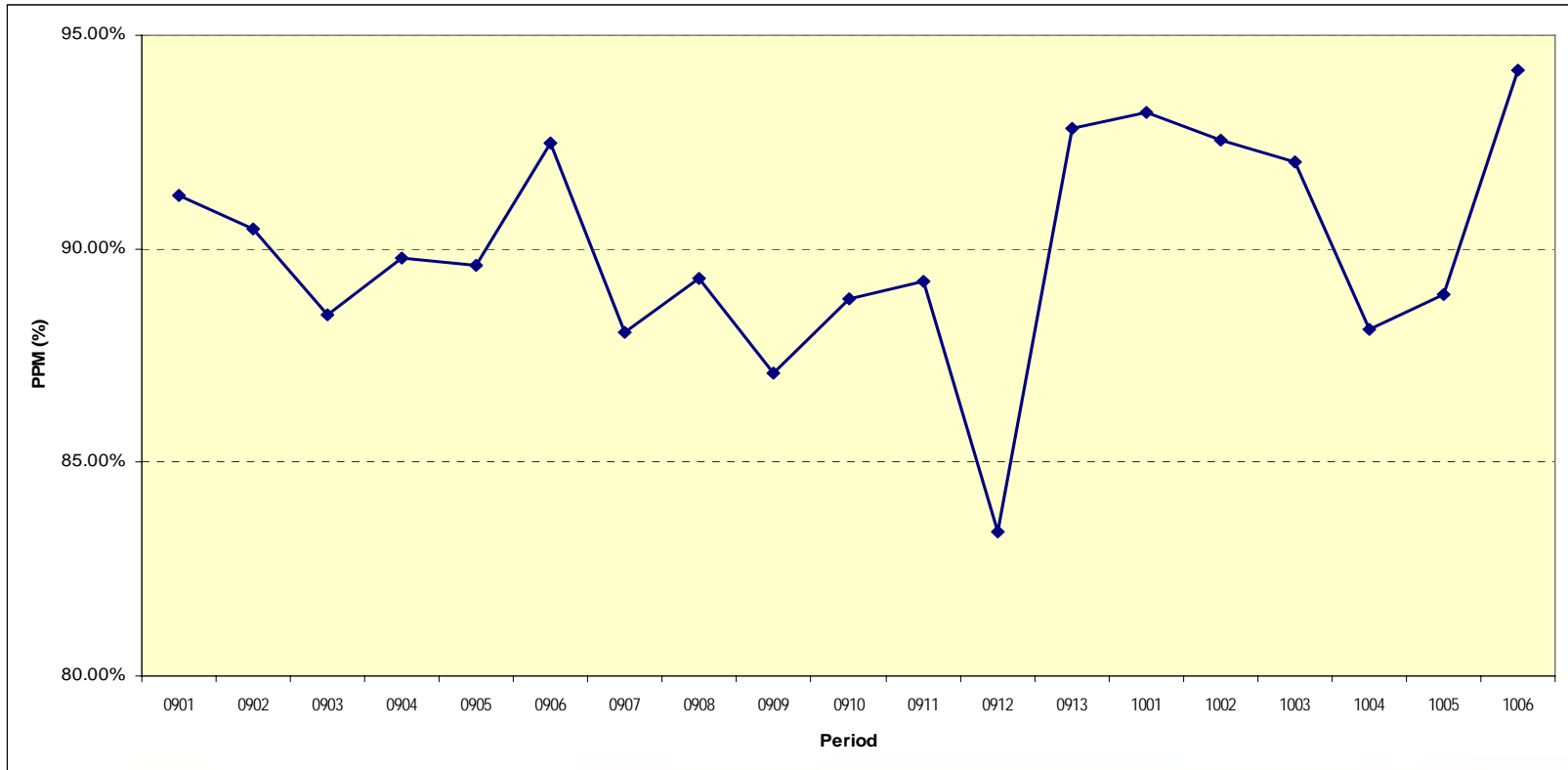
# FGW PPM over the last two years



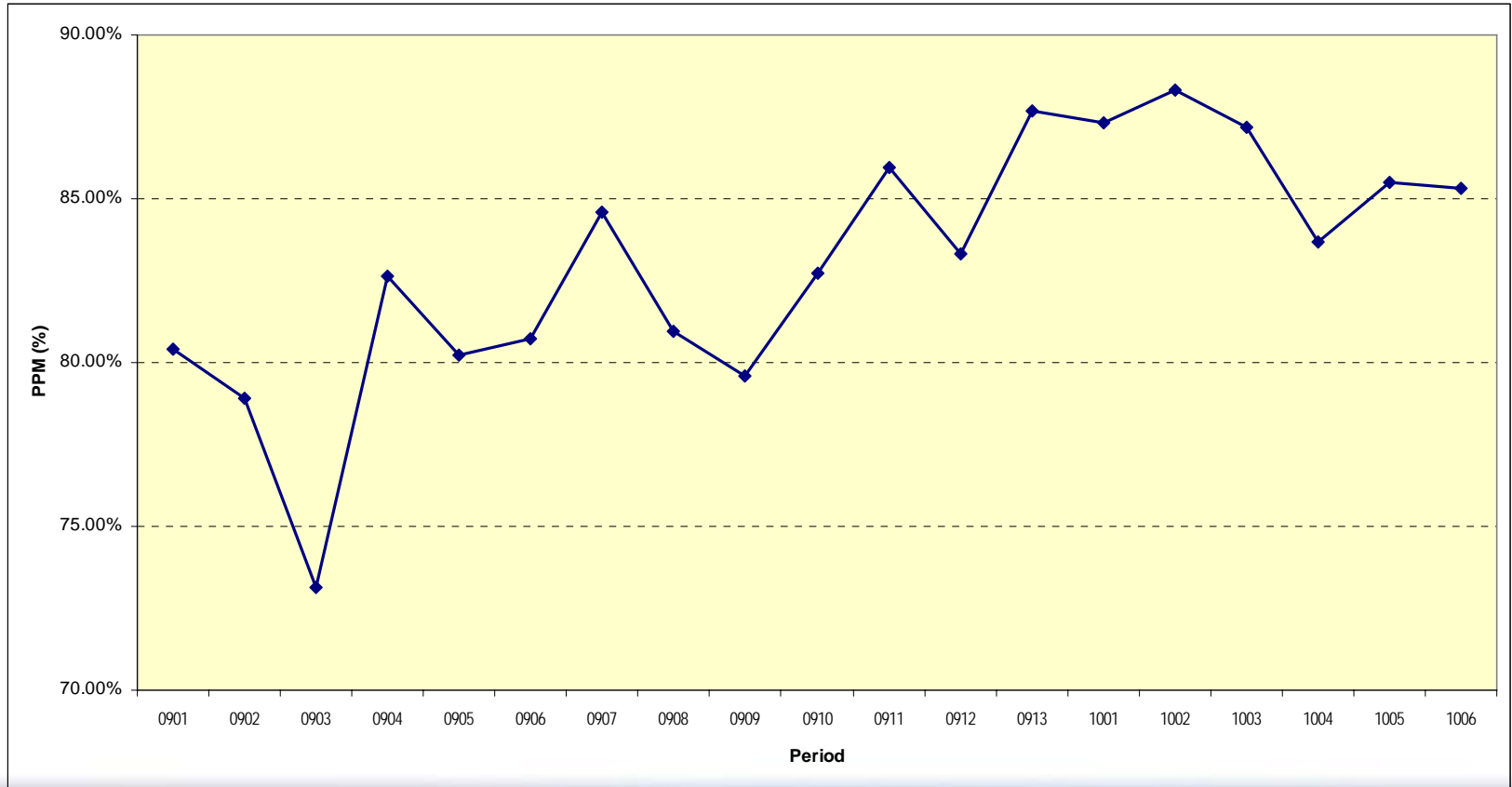
# PPM by Service Group



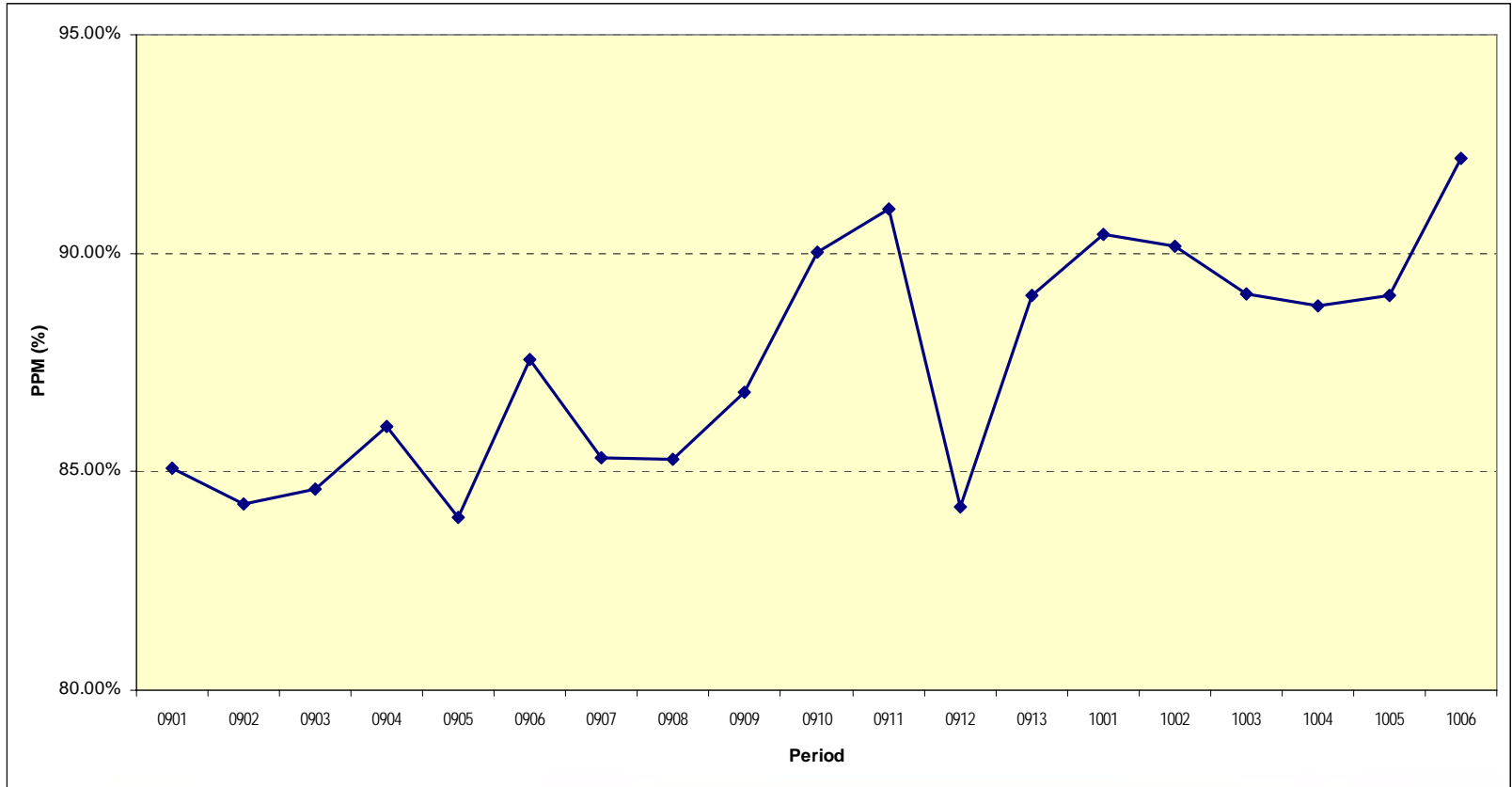
# High Speed Services London to Bristol



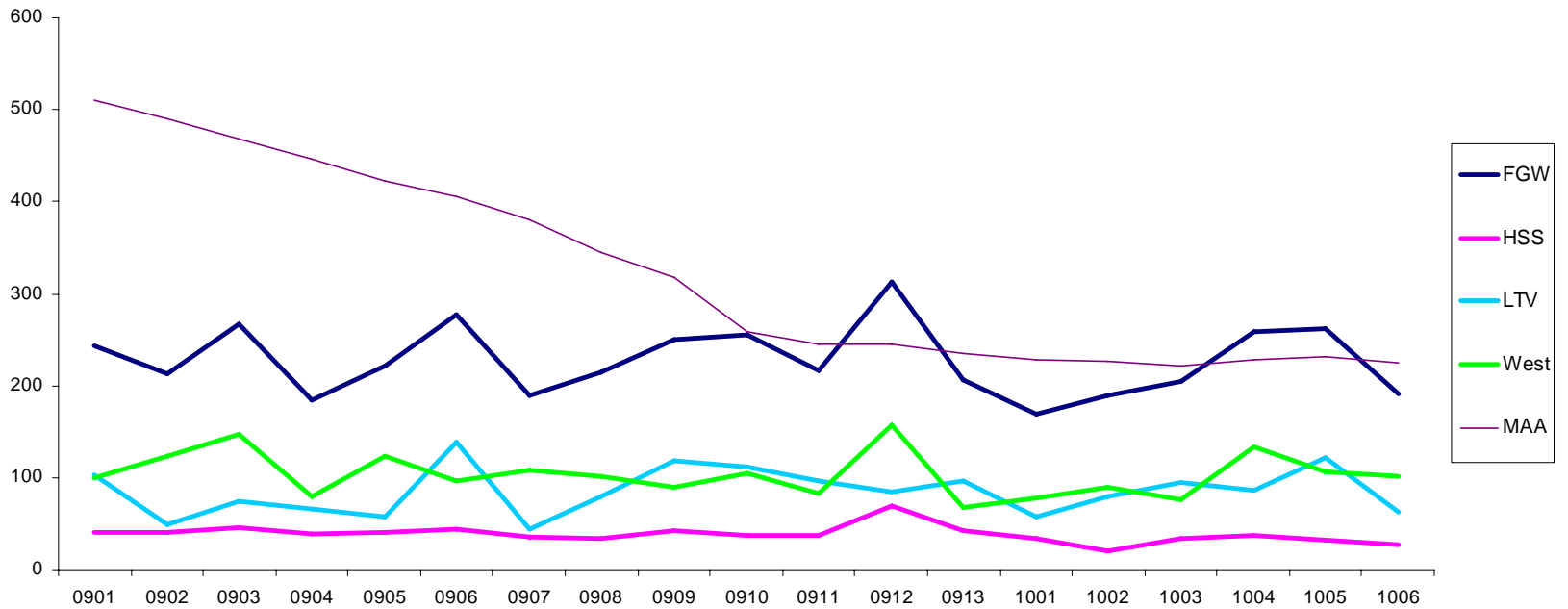
# Cardiff – Portsmouth Services



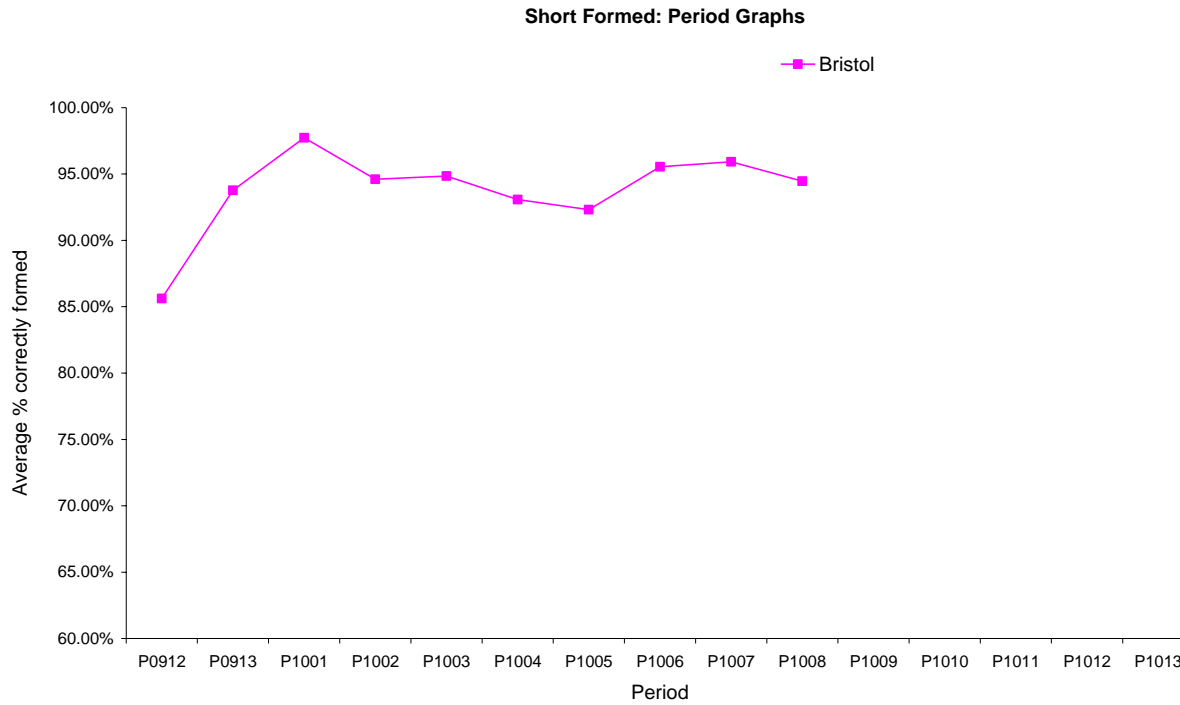
# Local services around Bristol



# Reduction in Cancellations



# Provision of Correct Formations



# Severn Beach Line

---

- Growth continues: 15% growth in period 6
- Clifton Down Turnback in operation to increase flexibility
- South Gloucestershire Council has now confirmed that it will support additional Summer Sunday services in 2010.

# Timetable changes: December 2009

---

- Package of changes driven by need to replicate SWT service losses west of Exeter
- Some peak strengthening in consequence (07.09 Worcester – Bristol and 05.35 Weymouth – Bristol)
- An additional 16.55 Filton - Westbury

# Additional loco-hauled services

---

- A second locomotive-hauled train will be introduced next month:
- It will operate the following services:
  - 06.22 Bristol to Cardiff
  - 08.00 Cardiff to Paignton
  - 12.35 Paignton to Cardiff
  - 17.00 Cardiff to Taunton
  - 19.12 Taunton to Bristol

## Timetable changes: May 2010

---

- An additional morning service from Cam & Dursley and Yate into Bristol:
- The existing 07.25 Bristol Parkway – Westbury starts back at Cheltenham to create twice-hourly peak service frequency from Gloucester
- Provides additional capacity to Filton Abbey wood
- Also earlier first arrival into Bristol from Cheltenham

# Rolling stock

---

- The electrification announcement has led to the cancellation of the proposed 200 new DMU vehicles
- Discussions in progress with the DfT to obtain sufficient vehicles in 2010 to replace these on short leases
- A small number of additional vehicles may also be available to accommodate growth

# Major Projects

---

- Electrification
- Reading remodelling
- Resignalling
- Rolling stock cascade
- Crossrail
- Cotswold redoubling