



West of England Partnership

Bath & North East
Somerset Council



Agenda Item 11 Southmead Future Accessibility Study

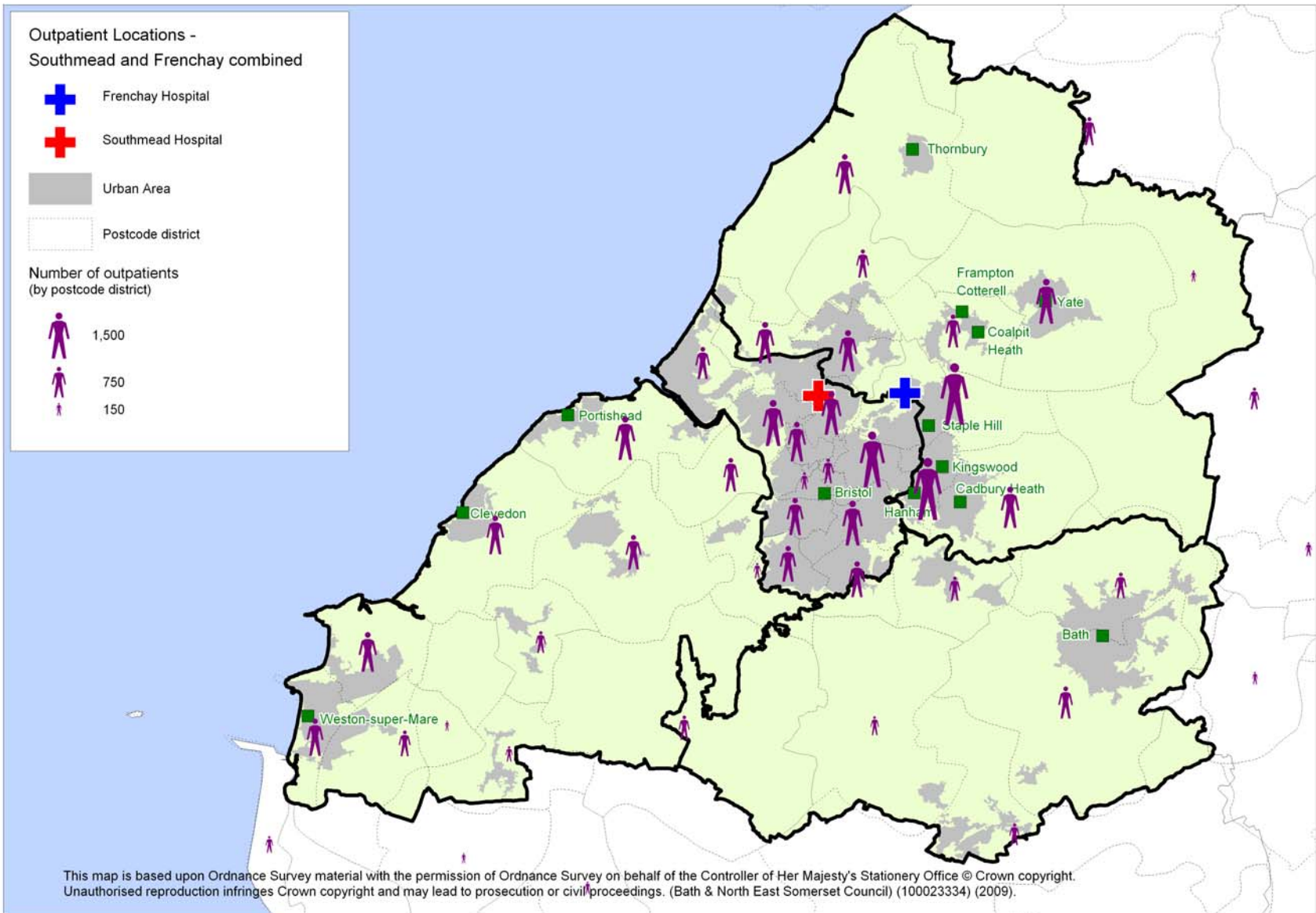
Background

- Redevelopment of Southmead and Frenchay Hospitals
- 6,500 staff
- £1.5m public transport support
- Study to identify “gaps” and measures

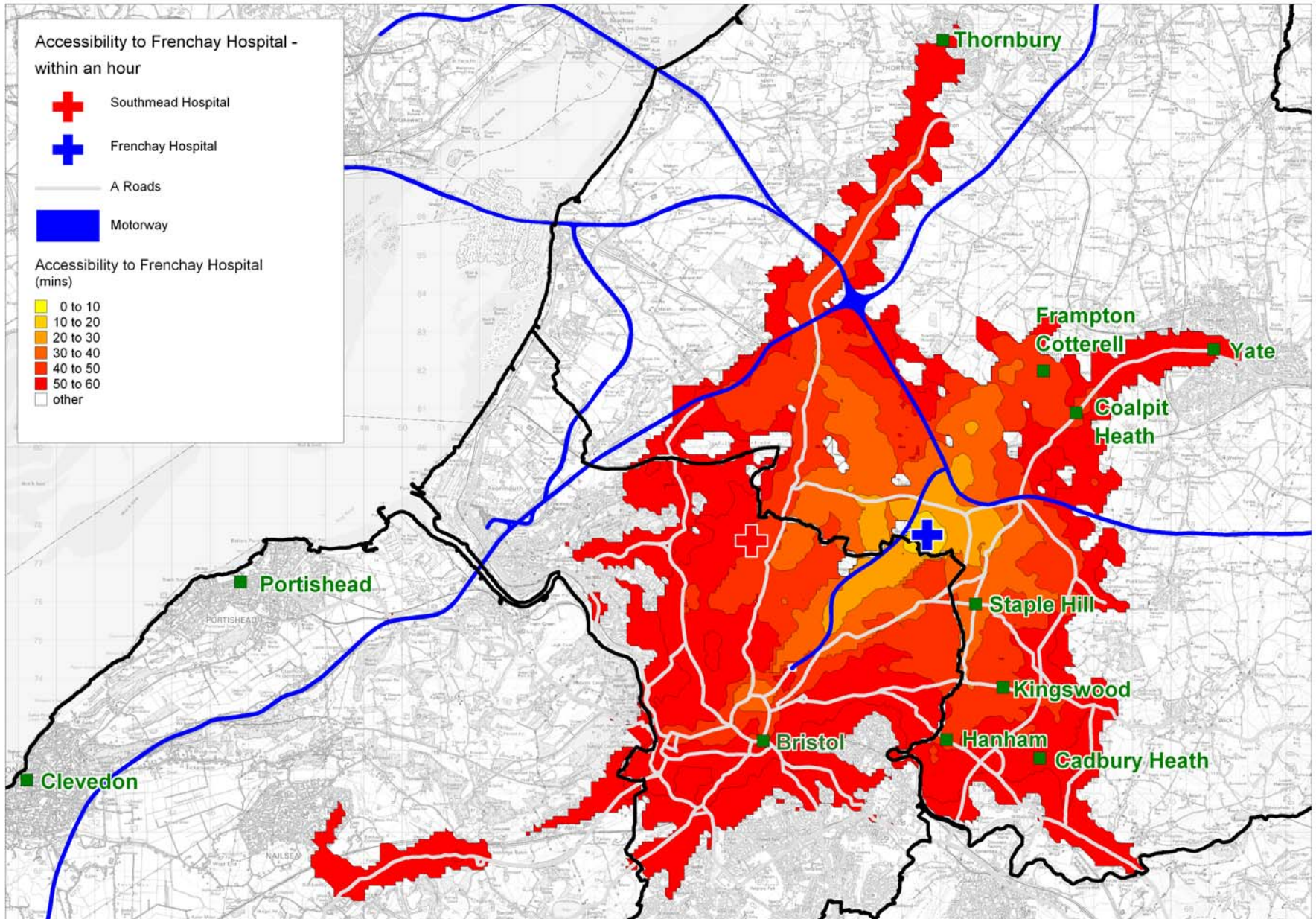
Study

- Patients and staff travelling from
- Current public transport provision
- Levels of accessibility
- Future schemes
- Options for public transport improvements

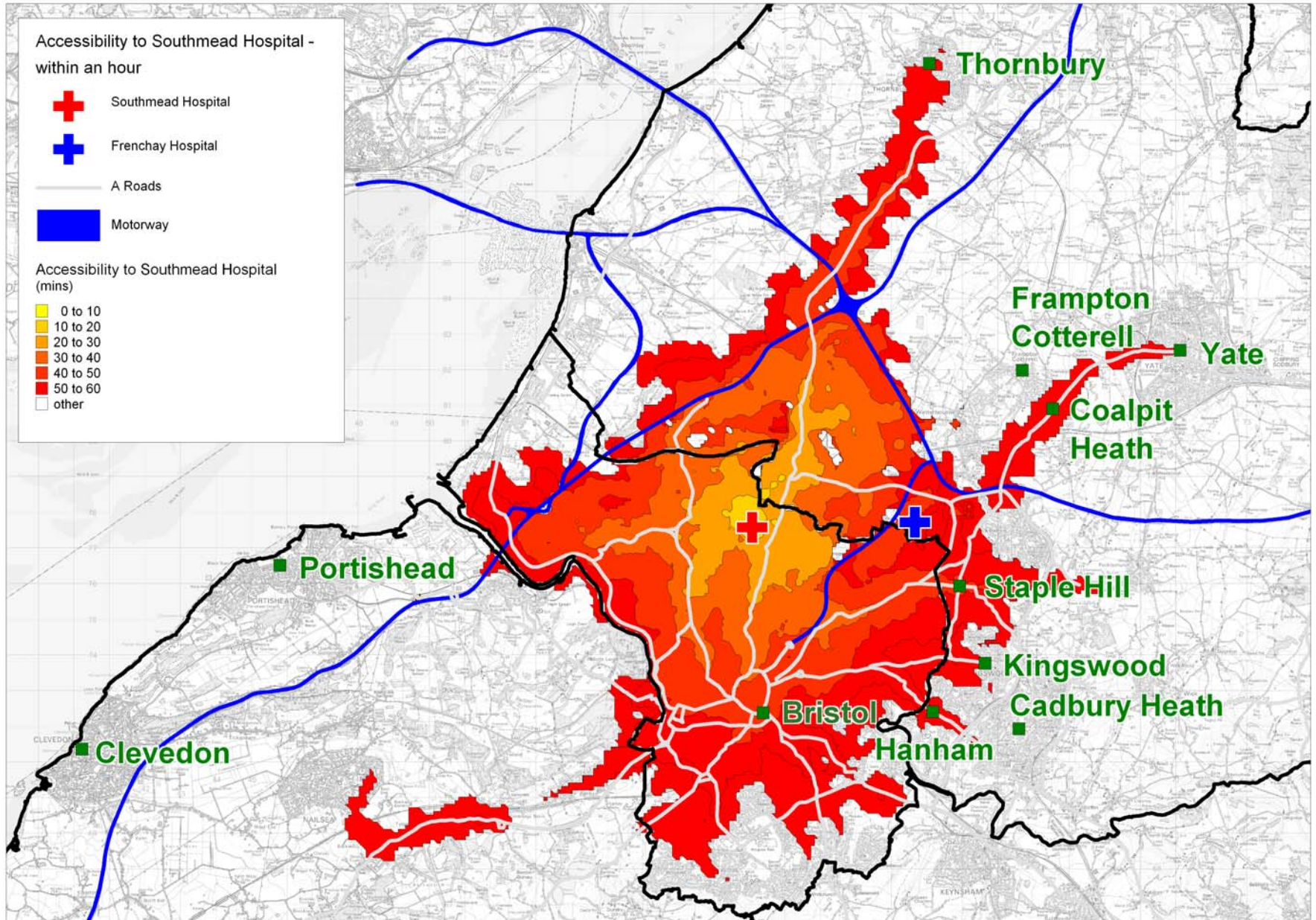
Outpatients



Frenchay accessibility



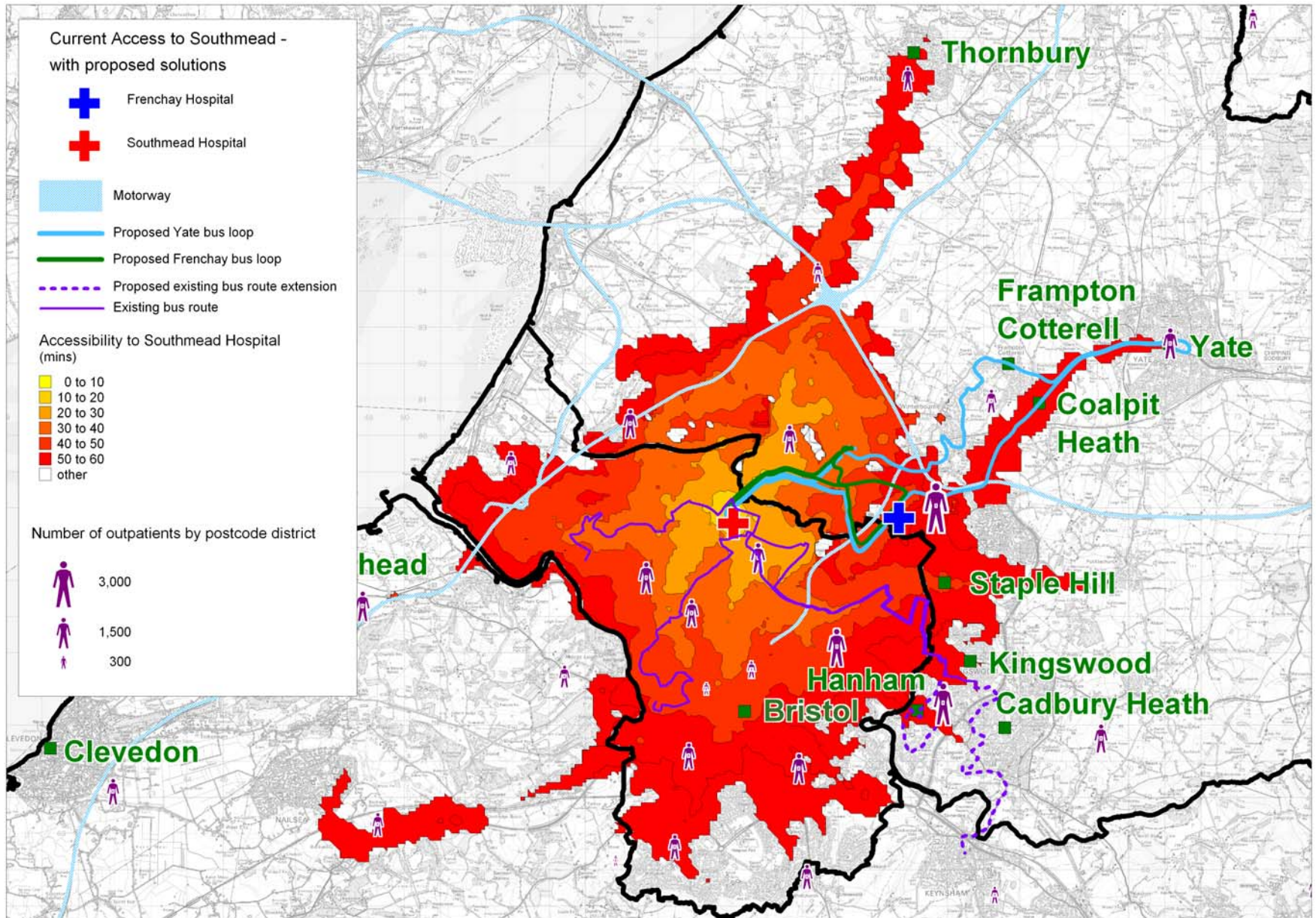
Southmead accessibility



Potential Options

- Extend bus services through hospital site
- High frequency orbital bus route with interchanges at UWE, Frenchay, Parkway
- Hanham and Cadbury Heath, Yate and Coalpit Heath and Thornbury services
- Marketing of interchanges
- Community Transport co-ordination with appointments

New bus routes (outpatients)



Next Steps - Consultation

- North Bristol NHS Trust, Bristol City and South Gloucestershire Councils joint working group
- Summary leaflet and questionnaire
- Website
- Information stands
- Telephone information line
- Future report to JTEC