

# West of England Partnership First Great Western Update

March 2010

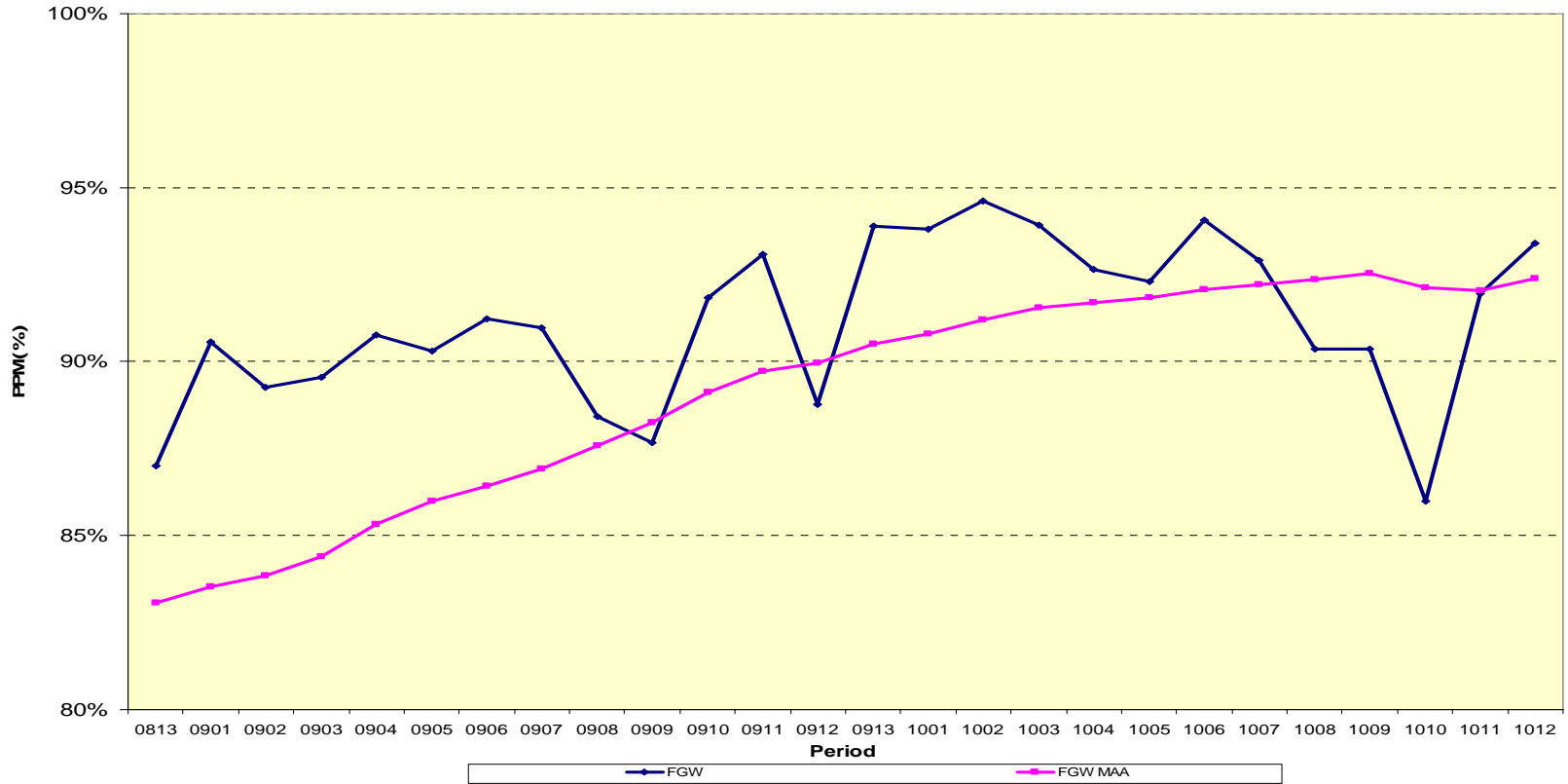
Julian Crow  
Regional General Manager  
West of England

# Performance

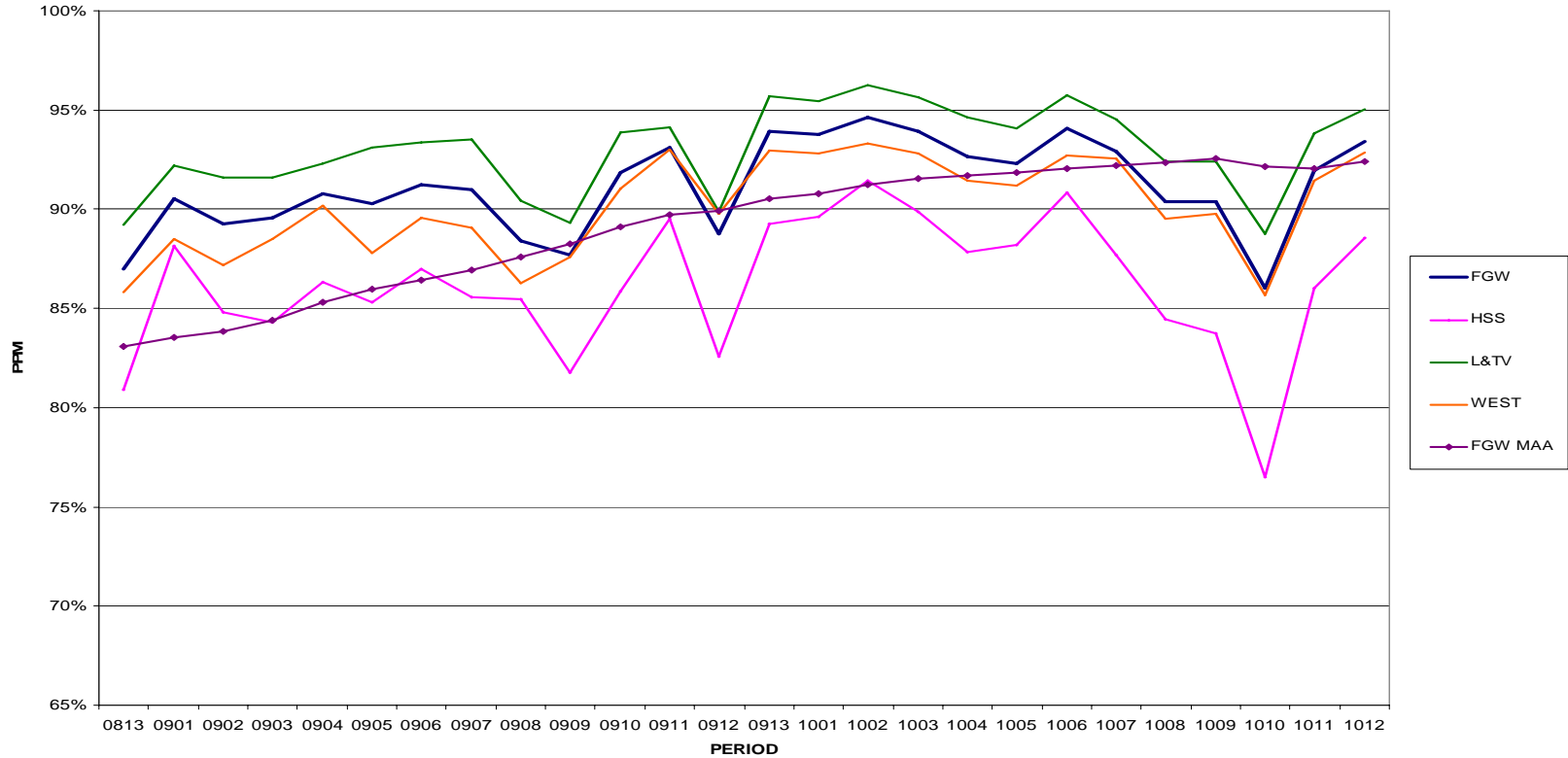
---

- A dip in performance during the snow, (when we still outperformed most of the UK) but performance improvement continues
- Period12 PPM for FGW overall was **93.4%**
- West services scored **92.8%**
- MAA for FGW is now 92.4%

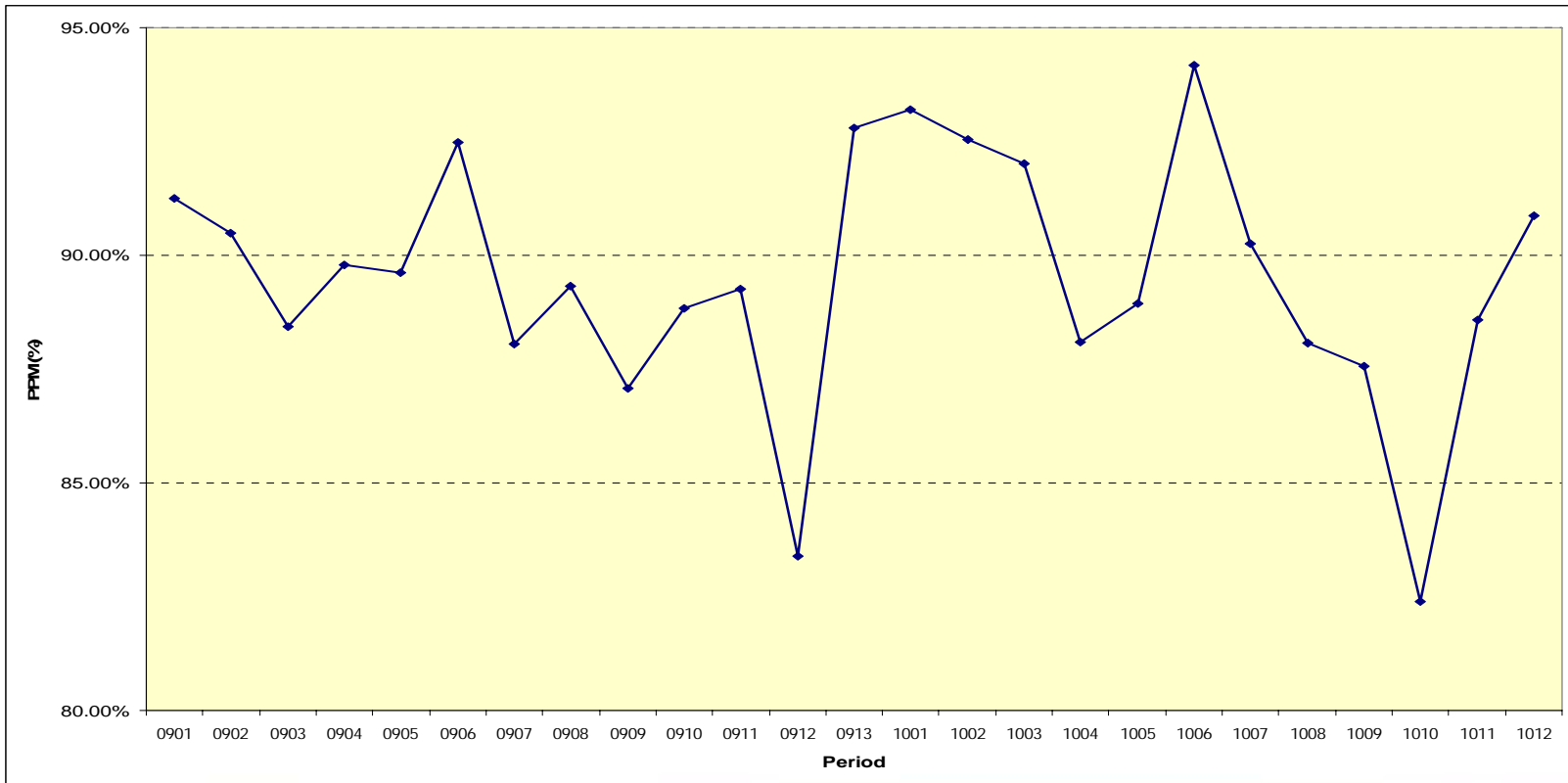
# FGW PPM over the last two years



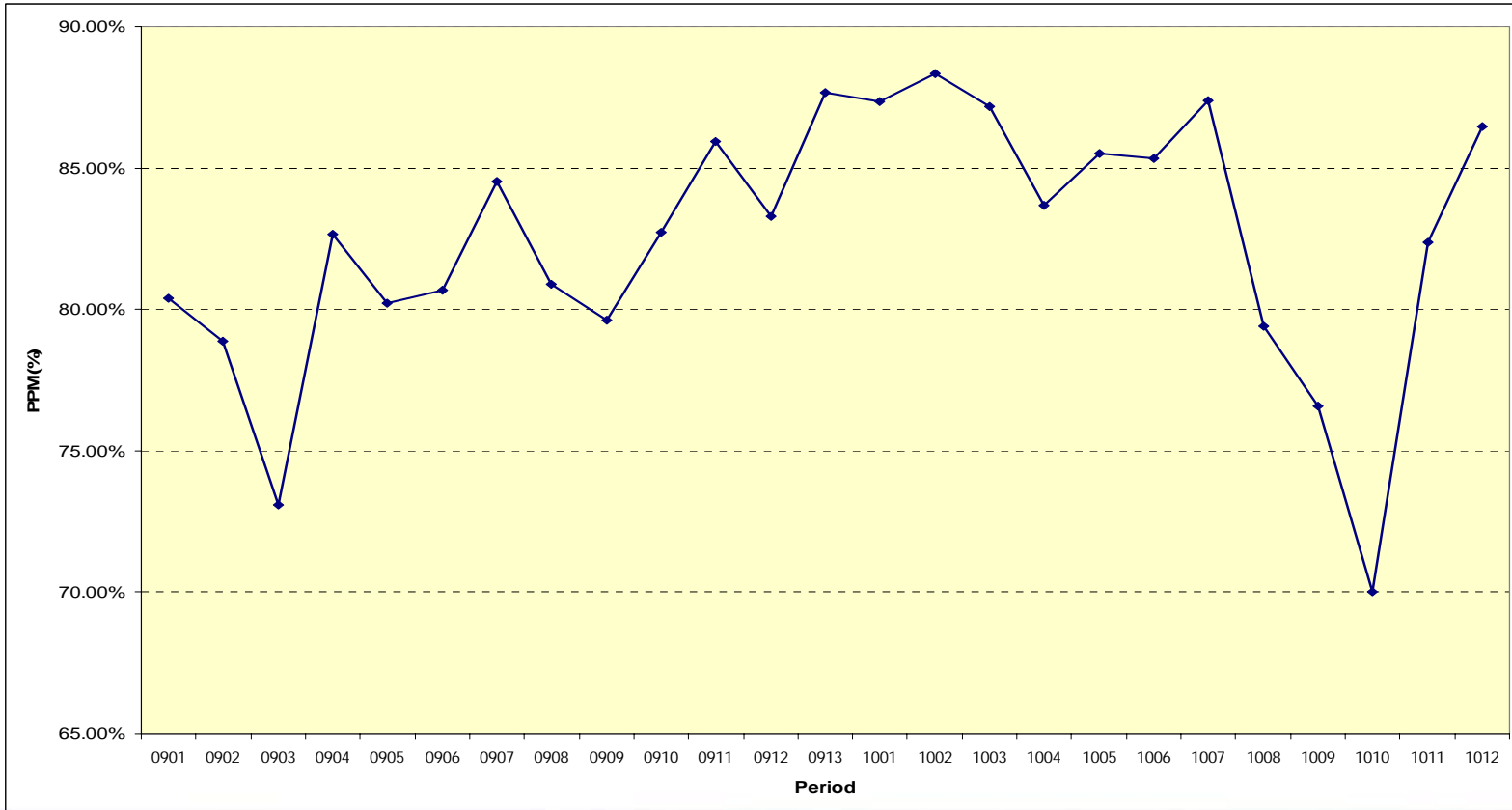
# PPM by Service Group



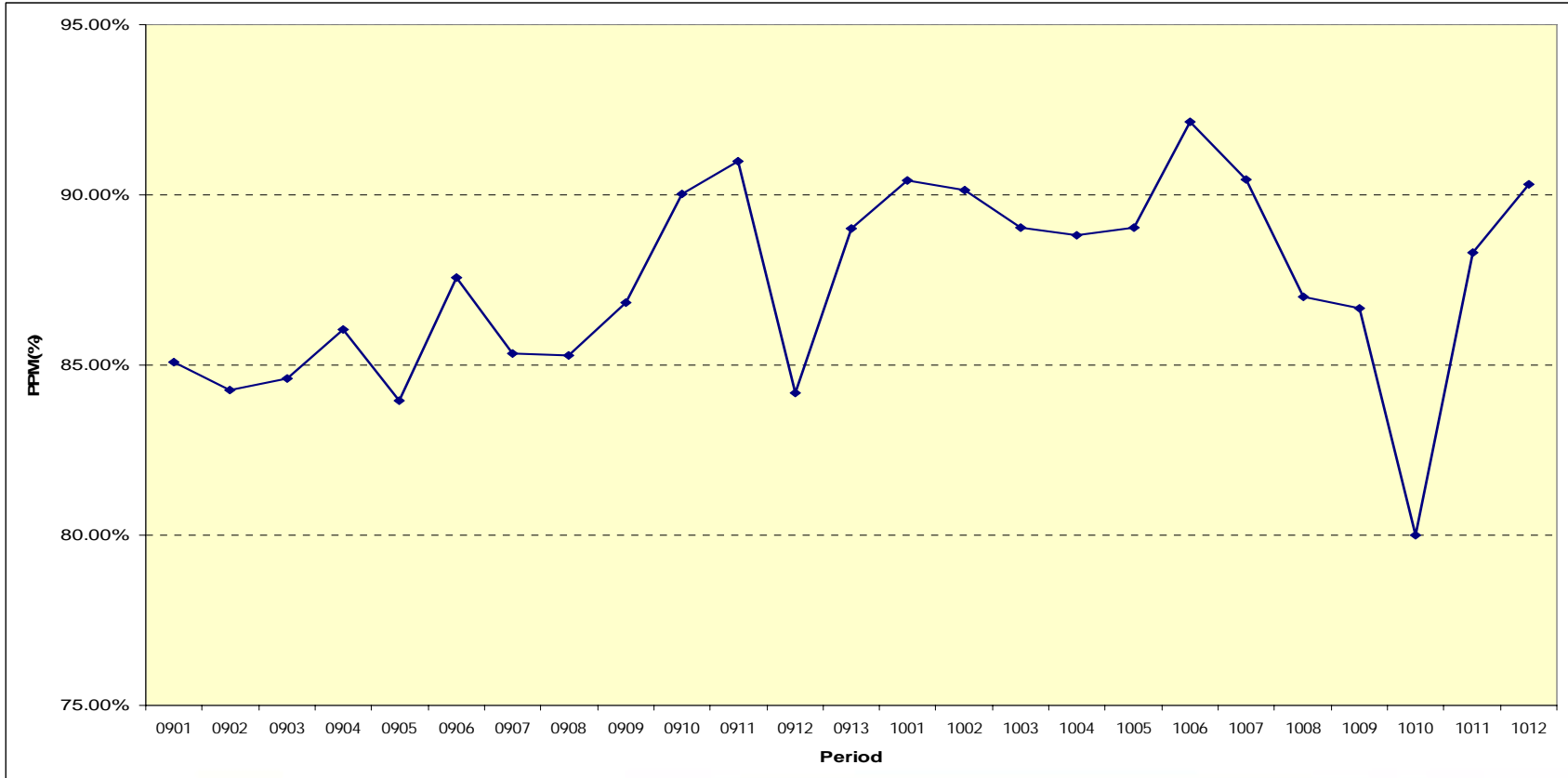
# High Speed Services London to Bristol



# Cardiff – Portsmouth Services



# Local services around Bristol



# Severn Beach Line

---

- Growth continues: average 20% growth per period this year, although rate of increase is slowing
- Additional Summer Sunday services start in May, with through running to Weston-super-Mare.
- Local ticket machines being progressed with Bristol City Council

## Timetable changes: May 2010

---

- An additional morning service from Cam & Dursley and Yate into Bristol:
- The existing 07.25 Bristol Parkway – Westbury starts back at Cheltenham to create twice-hourly peak service frequency from Gloucester
- Provides additional capacity to Filton Abbey wood
- Also earlier first arrival into Bristol from Cheltenham

# Rolling stock

---

- ‘FGW 30’ agreement reached with DfT to replace all short-lease Units with Class 150s
- Agreement includes investment at Exeter depot for improved fleet maintenance
- Discussions continue over additional trains for growth – critical to meet both current crowding / growth and also HLOS assumptions.

# Major Projects

---

- Electrification
- Reading remodelling
- Resignalling
- Rolling stock cascade
- Crossrail
- Cotswold redoubling