

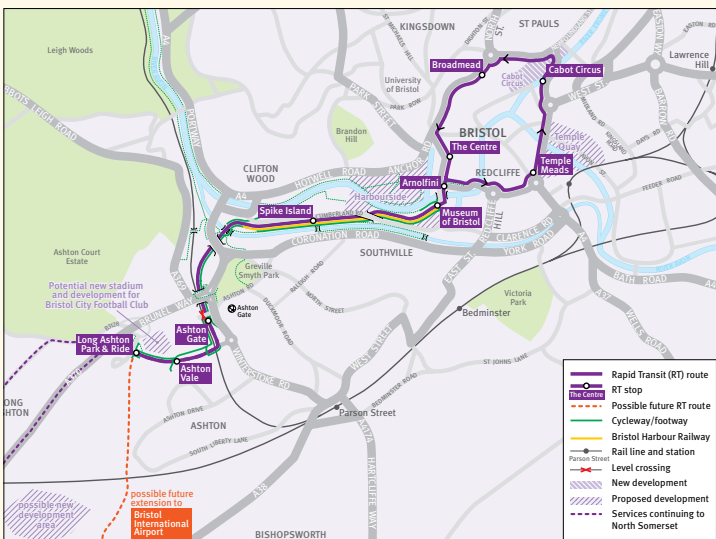
Welcome

Welcome to the Travel+ newsletter. Travel+ is the badge we are giving to transport improvements in the West of England. You will see the name and logo appearing on vehicles, information leaflets and wherever work is being done to improve the transport options.

See www.travelplus.org.uk for details on all the Travel+ projects



Rapid Transit moves ahead



© Crown Copyright. All rights reserved. 100023410, 2009.

Plans for a rapid transit from Ashton Vale to the south west of Bristol direct into Temple Meads, returning via Broadmead and Cabot Circus shopping centres are moving ahead.

The rapid transit will be separated from other traffic and have priority over other vehicles making journey times very reliable. Much of the route will be newly built and will include high quality walking and cycling links.

The modern, environmentally friendly vehicles will be easy to get on and off and will have 'off-board', or 'pre-

pay', ticketing to speed up boarding and reduce delays.

The route from Ashton Vale will also allow buses running from Weston-super-Mare, Nailsea and Clevedon to run services on the rapid transit route, improving the public transport connections for many towns and villages.

The estimated cost for this route is around £48million including £43 million from Government. The West of England authorities have put in a full, detailed funding bid to Government. If all goes to plan construction could start in 2011.

Easier access to and around Weston

A package of measures to improve travel within and around Weston-super-Mare costing some £51 million is being planned.

An initial bid has been made to government for funding for the first phase of these schemes

Weston Transport Package



© Crown Copyright. All rights reserved. 100023410, 2009.

This £16 million bid includes

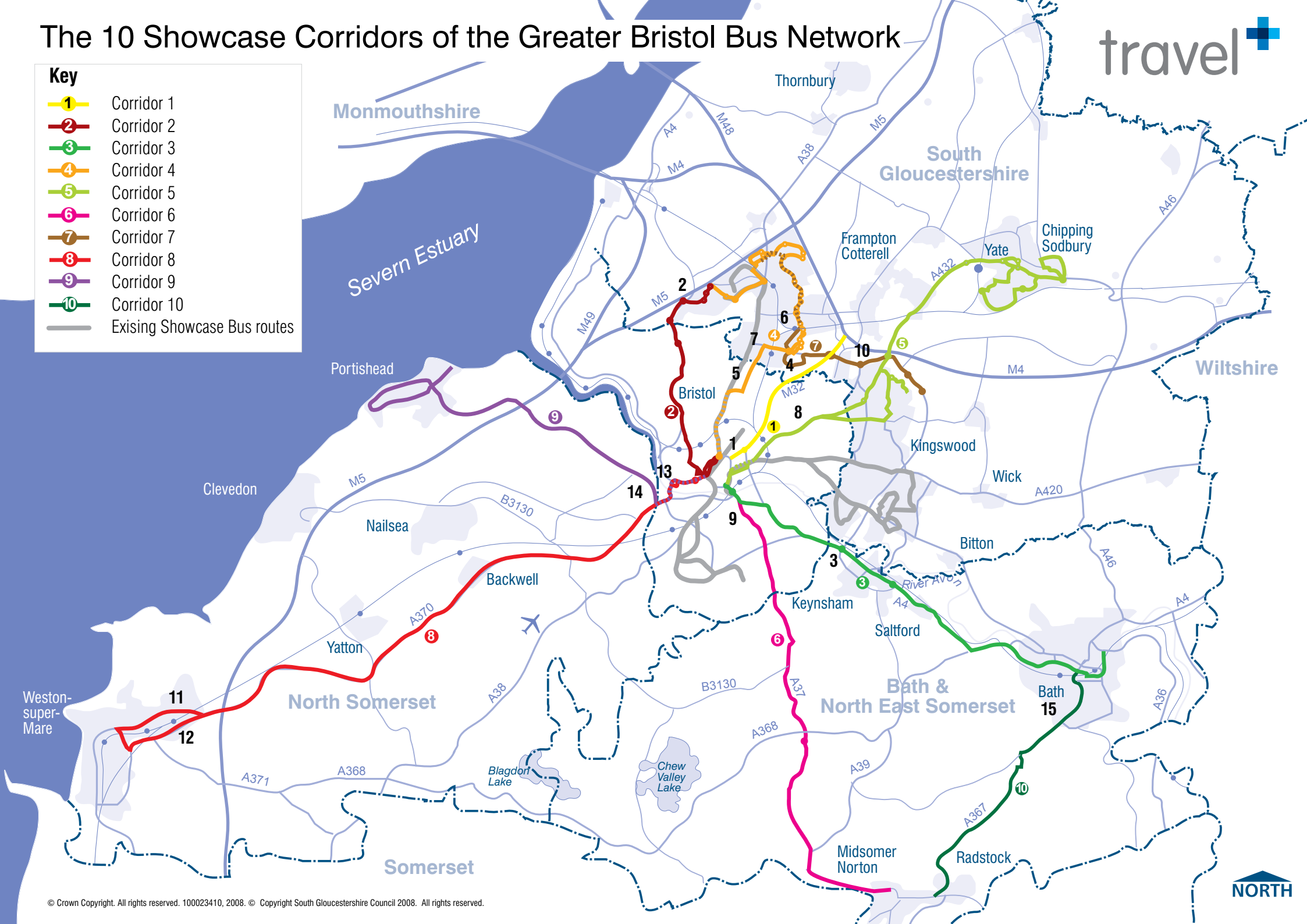
- Improvements to M5 Junction 21;
- A370 Gateway improvements that include widening Marchfields Way;
- Worle Station improvements including:
 - A new south side car park
 - Bus interchange on both sides of the station
 - Extended and new bus services to the station with:
 - Bus priority measures along Elmham Way
 - A new bus only link to Queensway
 - Improved facilities for cyclists and pedestrians.

If the approvals are granted the first part of the package, works to M5 Junction 21 could start in 2012.

The 10 Showcase Corridors of the Greater Bristol Bus Network

Key

- 1 Corridor 1
- 2 Corridor 2
- 3 Corridor 3
- 4 Corridor 4
- 5 Corridor 5
- 6 Corridor 6
- 7 Corridor 7
- 8 Corridor 8
- 9 Corridor 9
- 10 Corridor 10
- Existing Showcase Bus routes



The latest on the new bus network

Since we received funding to develop 10 showcase corridors across the region in May 2008 work has been steadily progressing.

The West of England Partnership has been working with bus operator First to improve the bus network.

This list outlines work as of May 2009. Numbers refer to the map (opposite) so you can see what is happening where.

Corridor 1 – M32 into Bristol

- (1) Last summer a dedicated bus lane was delivered on Newfoundland Way after junction 3 of the M32. This provides time savings for buses approaching the city centre, improving punctuality and reliability.



Corridor 2 – A4018 From Cribbs Causeway to Bristol City Centre via Henbury and Westbury

- (2) An extra bus lane has been completed along Lysander Road near Cribbs Causeway to prevent the buses from being caught up in the traffic entering The Mall.

First has introduced new buses along this corridor with 30 brand new buses for services 1 and 54 (Cribbs Causeway to Broomhill and Stockwood). These buses feature low floor access, more comfortable seating and engines designed to reduce Co2 emissions.



Corridor 3 – A4 from Bath to Bristol City Centre via Keynsham

- (3) Work has started on the A4 at Hicks Gate. This will improve the junction to give buses priority and also to help prevent accidents and tackle congestion. Work is due to finish in June.



Corridor 4 – From Cribbs Causeway to Bristol City Centre via Bradley Stoke, Abbey Wood and Horfield

- (4) Work is taking place on the A4174 Ring Road at the Abbeywood roundabout in Filton. This includes an extra bus lane to allow buses, taxis and motorcycles to travel through the area reducing journey times, plus improved cycling and walking facilities. Work is due to be finish in September.



In Bradley Stoke and Patchway new bus shelters and raised kerbs have been installed to improve access.



- (5) The Filton Avenue/Lockleaze Road junction has been improved with new traffic signals to allow buses to trigger a green light, plus advanced stop lines for cyclists.



- (6) Work has started to install a bus only lane at New Road, Filton saving time for buses. Work is due to finish by 8 June.



- (7) In the summer work will start on a bus lane on Filton Avenue in the northbound (heading towards Bristol Parkway) direction which will involve widening the road.



Corridor 5 – A432 from Yate/Chipping Sodbury into Bristol

- (8) Work is taking place on Fishponds and Stapleton Roads to install new fibre optic cabling to improve control of the traffic signals.



Corridor 6 – A37 from Midsomer Norton to Bristol

- (9) On the A37 Wells Road junction with St. John's Lane, traffic signals have been upgraded to include bus priority equipment and improvements to the pedestrian crossing facilities.



Corridor 7 – A4174 Ring Road from Emersons Green to Cribbs Causeway via UWE, Abbey Wood and Filton

- (10) The westbound slip roads to Hambrook and Frenchay have been lengthened, to reduce the amount of queuing traffic in these lanes lessening congestion at the junction.



Corridor 8 – A370 Weston-super-Mare to Bristol City Centre

- (11) On the A370 Locking Road the traffic signals have been upgraded to give priority to buses by allowing signals to change to green when a bus approaches. Improvements to Baytree Road roundabout will also enhance pedestrian facilities.



Bus stop improvements are currently being progressed along the A370. This includes Yatton, Claverham, Long Ashton, Flax Bourton, Brockley, Cleve, Congresbury, Hewish and Locking Road.



- (12) A bus lane has been installed on the westbound approach to junction 21 of the M5 on the A370, operational during peak hours, to avoid queues and delays. A new east bound cycleway has also been put in.



- (13) On the A370 at Plimsoll Bridge, an upgrade of the traffic signals has been completed to reduce congestion.



Corridor 9 – A369 Portishead to Bristol City Centre

Along the A369 corridor the bus stops are being improved.



- (14) The A369 Bridge Road traffic signals have been improved allowing the lights to change to green when a bus approaches, giving priority to the bus.



Corridor 10 – A367 Bath to Radstock & Midsomer Norton

- (15) Work is taking place on the A367 at Odd Down to build a new bus lane. The work is due to finish by June.



Also on the A367 the bus stops are being improved with raised kerbs. To improve access for bus users, and new bus shelters at some stops.



Key - main travellers benefiting from works



Bus



All road users



Taxis



Motorcycles

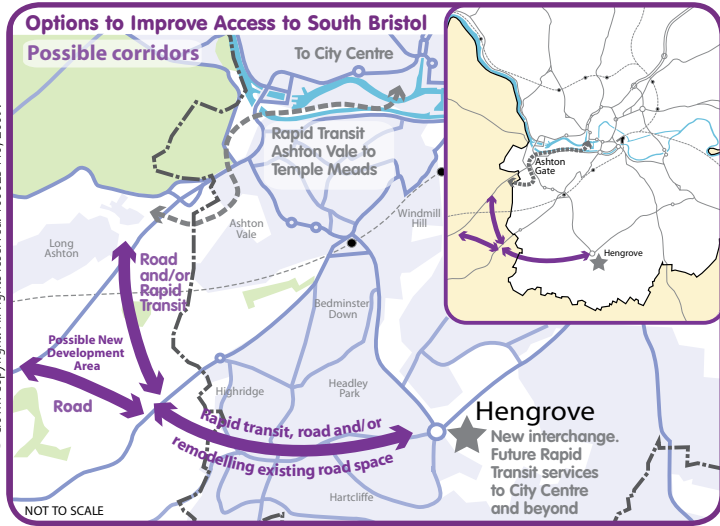


Cyclists



Pedestrians

Links across and around South Bristol



New links are needed in the south and south west Bristol and surrounding North Somerset area to tackle congestion, improve access, help regeneration and support growth. Business and local residents

are also looking for better connections between the A370 and the A38 and between the A38 and Hengrove.

The West of England authorities are considering how best to do this. The

link could be a road, a rapid transit, or a combination of both, or simply be adjustments to existing roads and junctions. The results of the first consultation will be posted on the West of England Partnership website in June.

A report giving the pros and cons of five different route options is available to read at www.westofengland.org/transport

People in the area will be given plenty of opportunities to make their opinions known through more consultation later this year. The earliest work on the ground could start would be 2014.

World Heritage City planning its transport future

Bath is famous around the world for its Georgian architecture, its Roman Baths but unfortunately has growing problems with traffic – over 20,000 journeys for work are made by car every day causing congestion and pollution.

But plans to double the number of park and ride spaces available and an east west rapid transit route are progressing.

Along with changes to the city centre that will free it up for pedestrians and improved bus routes, the £54million package aims to tackle congestion and improve air quality making travel throughout Bath easier for residents and visitors.

The schemes, having gained first stage approval from the Department for Transport, are now at final design and permissions stage.

Journey times come down

In February the The West of England authorities heard that, thanks to your help in reducing congestion, we had been awarded £1/2million

from the Governments Urban Congestion Fund as journey times on specific routes had been reduced.

This money will help us with more work on keeping traffic moving in the area.



Cycle City gets going

Since funding was received for the Cycling City project, Bristol and South Gloucestershire have been busy improving cycling facilities to make cycling a real transport option for more residents.

Within Bristol, new cycle paths and facilities such as cycle parking and enhanced routes, have been completed at the following locations:

- City Centre, River Street
- Lawrence Hill, underbridge
- Meads Reach Bridge
- Long Ashton Road
- Hartcliffe Academy
- Westbury on Trym Village, Safer Route to School
- Prince Street Bridge, a trial to close one side of to motor traffic

Work has also started on designing and developing a further eleven schemes including links to the University of the West of England, Aston Court, Hartcliffe and Yate.

Bikeability cycle training for students has seen a dramatic improvement with over 3,000 in Bristol and 2,600

in South Gloucestershire trained within the last year, exceeding the original target.

Also in South Gloucestershire Council work has started on a project to provide nearly 4 miles of new off road cycle path between Yate and Mangotsfield. New cycle parking has been installed at Bristol Parkway station and a hand bike is now available to hire from Webbs of Warmley to assist those with mobility problems.

There will also be many events across the area during bike week, 13-21 June, for more information about these events and the project visit www.cyclewest.co.uk or www.bristol.gov.uk/cyclingcity



If you would like this information in a different format, for example: Braille, audio tape, large print, computer disk, BSL or community languages, please contact: 01454 868009