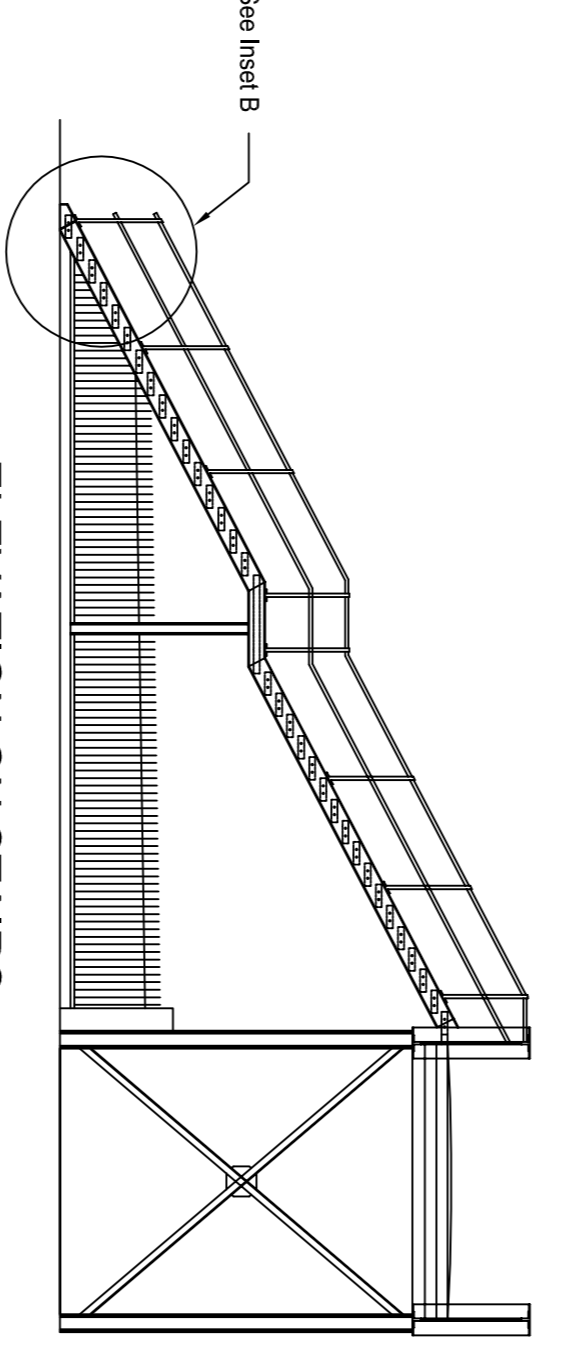
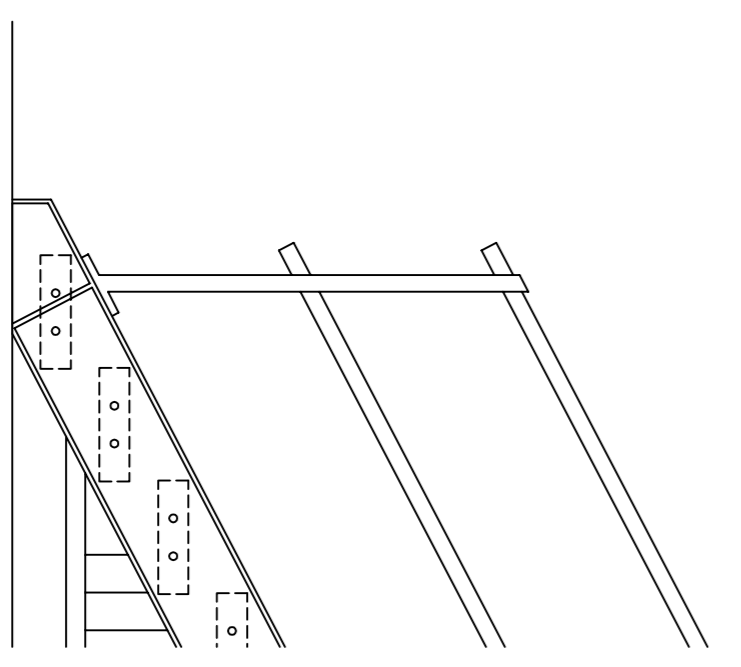


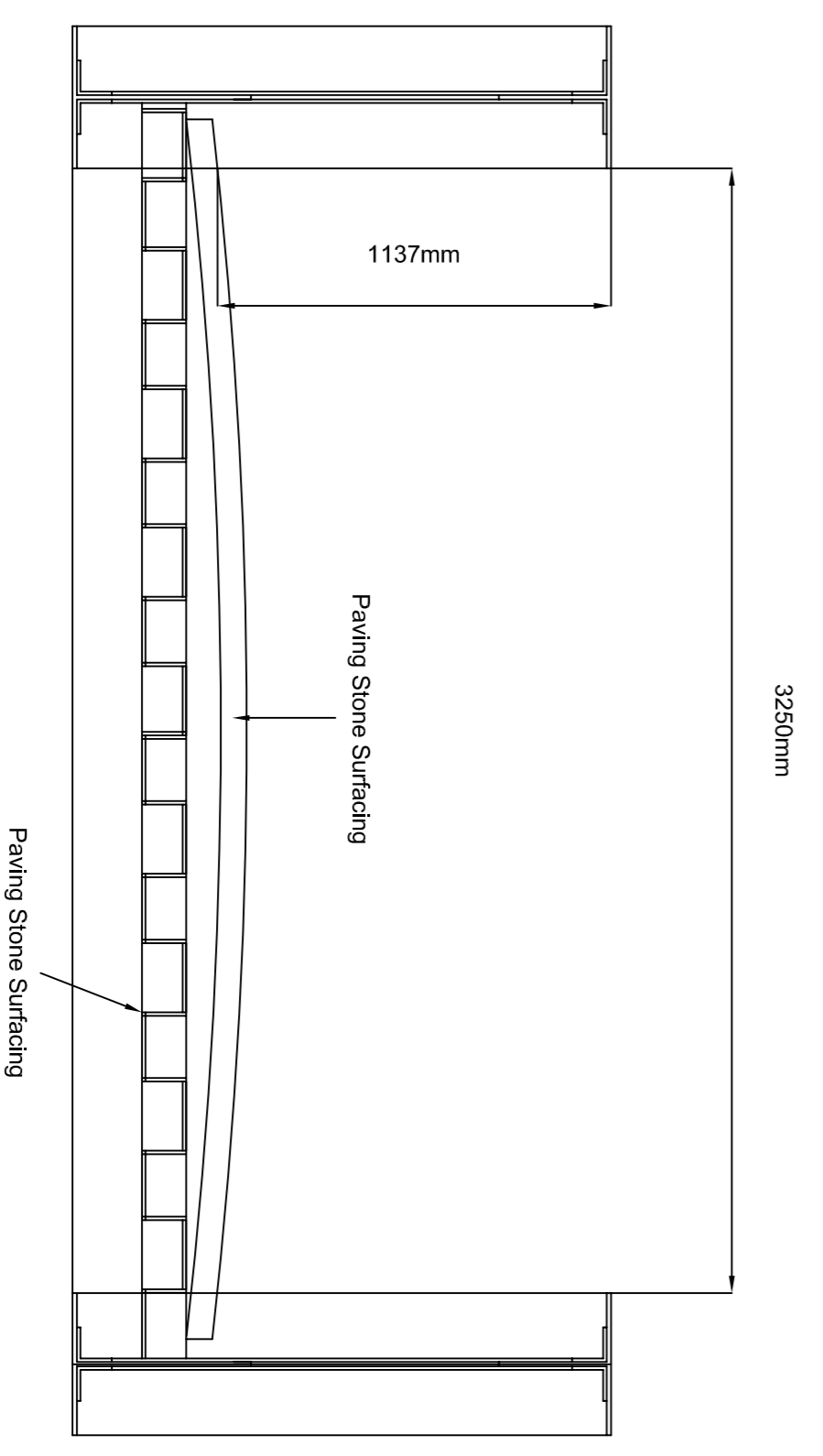
EAST ELEVATION
SCALE 1:100



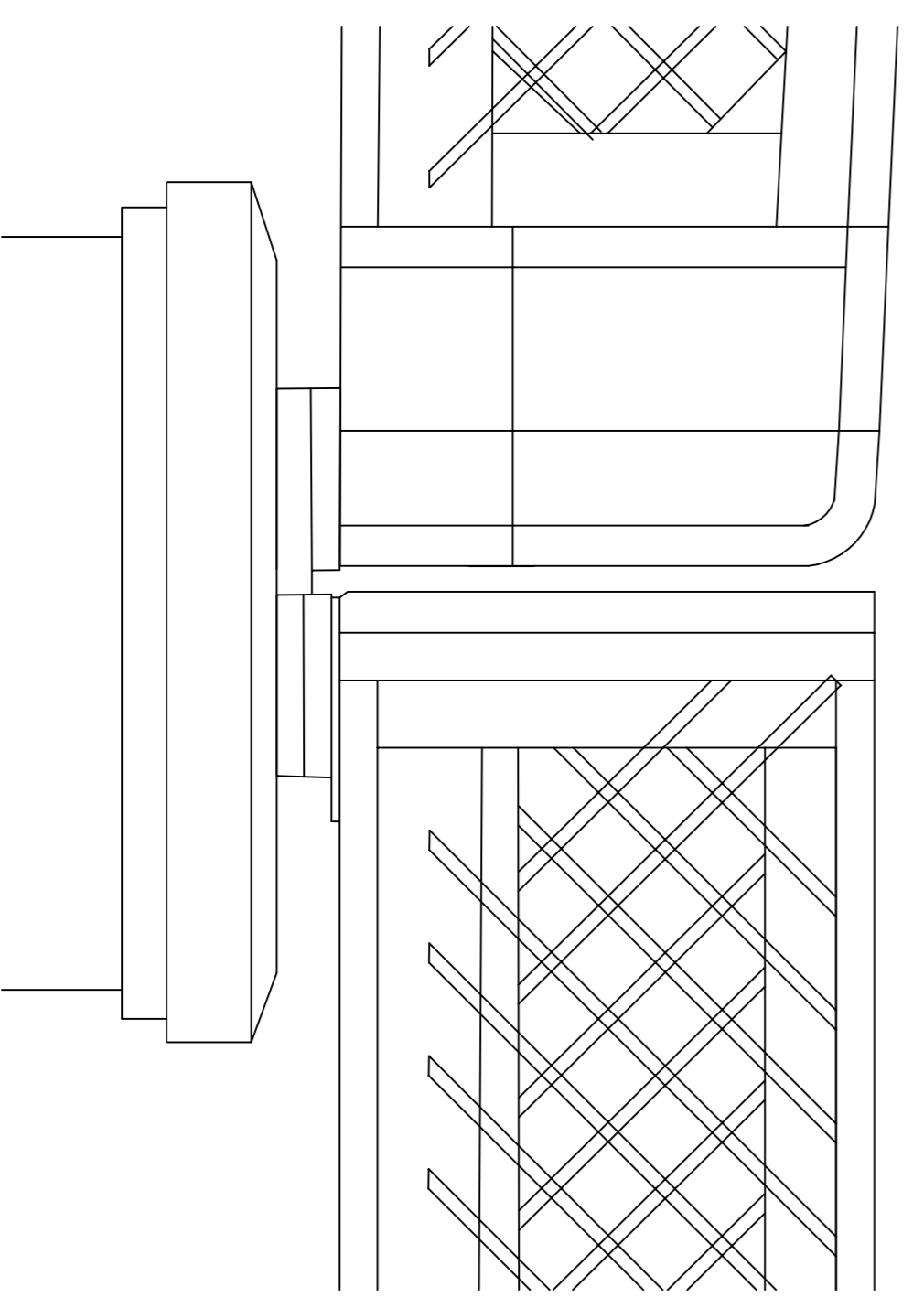
ELEVATION ON STAIRS
SCALE 1:100



INSET B
SCALE 1:20



CROSS SECTION A - A
SCALE 1:20



INSET A
SCALE 1:20

PRELIMINARY

Notes:



- All dimensions are in millimetres unless shown otherwise.
- Levels are in metres A.O.D.
- This drawing to be read in conjunction with the illustrative Corridor Section Design scheme drawings, as below:
 - CTR ADU-0100-001 to 007;
 - CTR ADU-0110-001 to 007;
 - CTR ADU-0180-001 to 005;
 - CTR ADU-0200-008 to 017.
- All new steelwork plates to be grade S355J0 to BS EN 10025.

| Rev | By | Chkd | Appr'd | Date | Description |
|-----|----|------|--------|------|-------------|
| | | | | | |

Client

West of England Partnership

Halcrow Group Limited
 Millers House, 91 Jones Street, Chichester, West Sussex PO19 1UH
 Tel: +44 (0)1243 846900 Fax: +44 (0)1243 538105
 Email: sales@halcrow.com www.halcrow.com

Halcrow

Project: **Ashton Vale to Temple Meads and Bristol city centre Rapid Transit System**

Drawing: **Illustrative Corridor Section Design Vauxhall Bridge Chainage 3795m Existing Layout**

Drawn by: ER Date: 12/08/10
 Checked by: RBB Date:
 Approved by: RPB Date:
 Drawing No. Revision: -
CTR ADU-1700-3795-02