



# Developing a **Green Infrastructure Tool** for the West of England

14 September 2007

Green Infrastructure in the West of England

Avon Wildlife Trust



# Why Green Infrastructure?



.....a positive and practical mechanism to facilitate development in areas of high growth while retaining and/or enhancing environmental quality.....

.....an essential part of ensuring that future development is sustainable.....

# The policy context



The collage features several key documents:

- RSS The Draft Regional Spatial Strategy for the South West 2006 - 2026**: A blue-toned document with a map of the South West region.
- Forest Plan January 2002**: A document with a cover image of autumn trees and the Forest of Avon logo.
- Bristol's Parks and Green Space Strategy**: A document with a cover image of a park and the text "Summary draft for consultation".
- Bath & North East Somerset Green Space Strategy**: A document with a green and white cover.
- Shaping Bristol over the next 20 years Bristol Development Framework - Core Strategy Issues and Options Paper July 2007**: A document with a cover image of a cityscape.
- Homes for the future: more affordable, more sustainable**: A document with a cover image of a modern residential street.
- Communities South West England**: A document with a green and white cover.
- Planning for a Sustainable Future**: A document with a cover image of a person reading a book.
- Avon Biodiversity Action Plan**: A document with a cover image of various wildlife.
- Biodiversity and trees**: A document with a cover image of trees and wildlife.
- South Gloucestershire Local Plan Written Statement**: A document with a white cover and a green wave graphic.
- Development in the Green Belt**: A document with a cover image of a green landscape.

## Green Infrastructure

Green Infrastructure in the West of England



# Evolution of GI

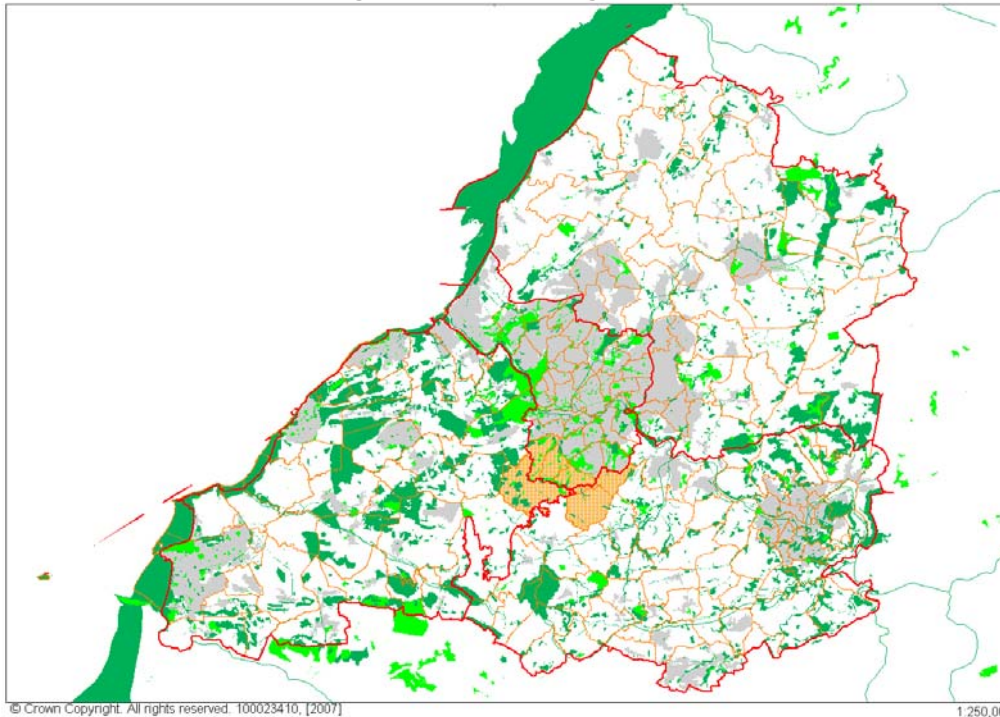


- Origins in the Thames Gateway – mid 1990s
- An approach adopted by many other Growth Areas
- A robust methodology
- Complements PPG17 – ‘Planning for Open Space, Sport and Recreation’ (2002)
- Incorporated into draft Regional Spatial Strategy – Policy GI1 (June 2006)
- Awarded DCLG New Growth Points funding in West of England (Oct 2006)
- Reinforced by DCLG White Paper on housing (July 2007)
- Part of ‘Programme of Delivery’ for DCLG Growth Area Funding (Sept 2007)

# The GI Project in the West of England



- Phase I – mapping of existing GI – commissioned by Countryside Agency



- Phase II – refining mapping and developing web-based tool – funded by DCLG New Growth Points programme and Natural England
- Use of web-site is unique in UK – consultation with stakeholders is key

Green Infrastructure in the West of England

# The GI Web-site



GI web-site will comprise pages including:

- a definition of GI
- the benefits of GI provision
- the principles of GI provision
- standards for GI provision

It will also include an overview of GI in the West of England covering:

- GI's importance to local communities and climate change
- a summary of the GI project in the West of England
- a guide setting out how to use the web-based tool

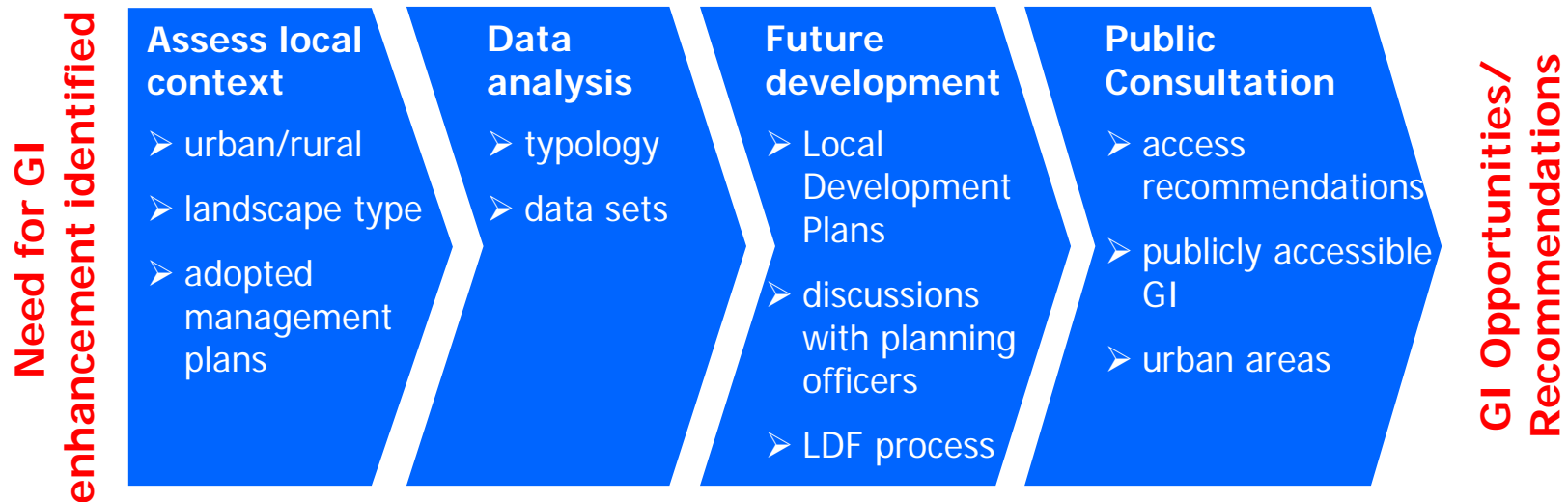
**The key component will be a web-based tool for viewing map-based GI information and opportunities**

# Building the web-site's content



A robust methodology will be used to:

- identify baseline GI provision
- identify areas of GI deficit relative to agreed standards
- identify opportunities for GI enhancement



# Mapping GI



The focus will be on making use of the typologies in PPG 17 (Planning for Open Space, Sport and Recreation, 2002):

## PPG 17 typologies

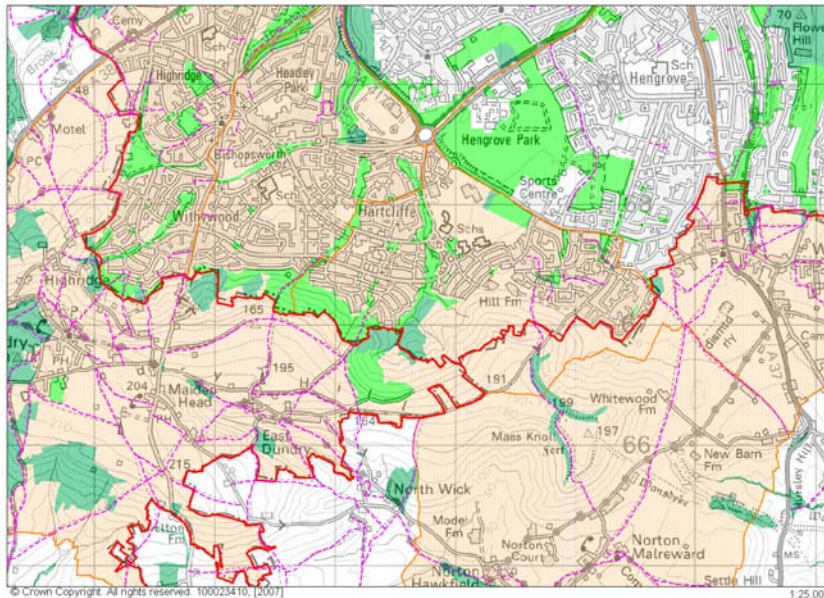
- Parks and gardens - including urban parks, country parks and formal gardens
- Natural and semi-natural greenspaces - including woodlands, urban forestry, scrub, grasslands wetlands, open and running water, wastelands and derelict open land and rock areas
- Green corridors - including river and canal banks, cycleways, and rights of way
- Outdoor sports facilities - including tennis courts, bowling greens, sports pitches, golf courses, athletics tracks, school and other institutional playing fields, and other outdoor sports areas
- Amenity greenspace - including informal recreation spaces, greenspaces in and around housing, domestic gardens and village greens
- Provision for children and teenagers - including play areas, skateboard parks, outdoor basketball hoops, and other more informal areas
- Allotments, community gardens, and city (urban) farms
- Cemeteries and churchyards
- Accessible countryside in urban fringe areas
- Civic spaces - including civic and market squares, and other hard surfaced areas designed for pedestrians

# Web-site mapping



There will be 3 scales of mapping. The 1:25,000-scale GI map will:

- be interactive
- include drop-down boxes to show opportunities in up to 50 areas
- link to a detailed supporting written schedule



## Dundry and Northern Slopes

Key opportunities:

- Access
- Biodiversity
- Climate change
- Landscape

Plus general recommendations

Further detail...



Detail to be fine-tuned with web designers

Green Infrastructure in the West of England

# Schedule of opportunities



Detailed supporting schedule for each opportunity:

Reference	Opportunity	Policy support	Potential Funding	Advice and further information
Each opportunity will be allocated a reference number	Detailed description of opportunity plus details of any consultation undertaken	↓	↓	<a href="http://www.avonwildlifetrust.org.uk/">http://www.avonwildlifetrust.org.uk/</a> etc ↓

Hyperlinks to external websites



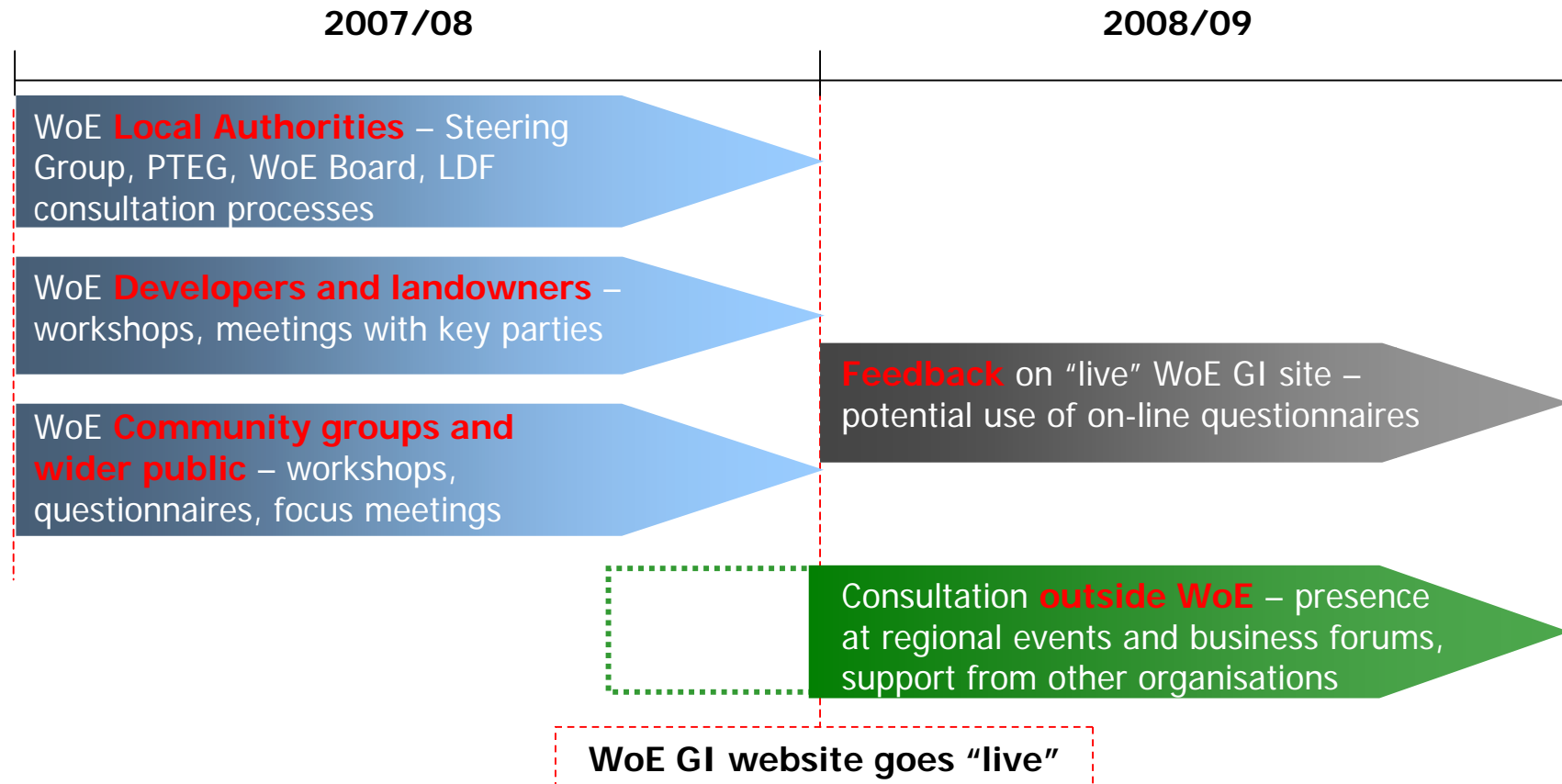
Green Infrastructure in the West of England



# Consultation process



High-level stakeholder consultation strategy:



Green Infrastructure in the West of England



# Developing a **Green Infrastructure Tool** for the West of England

Green Infrastructure in the West of England