



BATH & NORTH EAST SOMERSET



The West of England Partnership

SUB-REGIONAL DELIVERY PLAN WORKSHOP

21 September 2007



The West of England Partnership

SUB-REGIONAL DELIVERY PLAN WORKSHOP

**Simon Birch
Chief Executive
West of England Partnership**

Purpose of the workshop

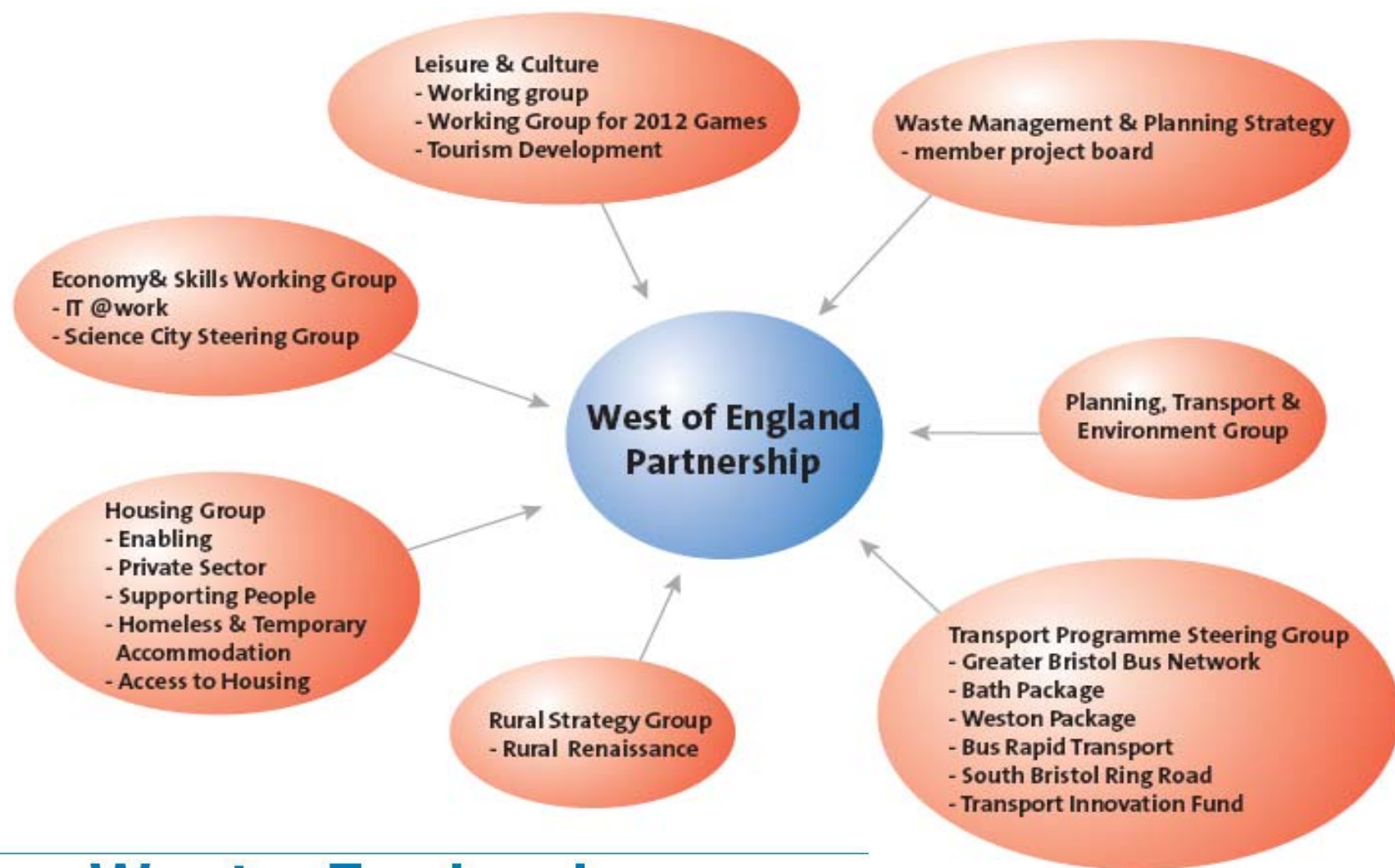
- Share information
- Obtain your input
- Start of ongoing process

West of England Partnership

- Bath and North East Somerset
- Bristol City
- North Somerset
- South Gloucestershire
- + Partners

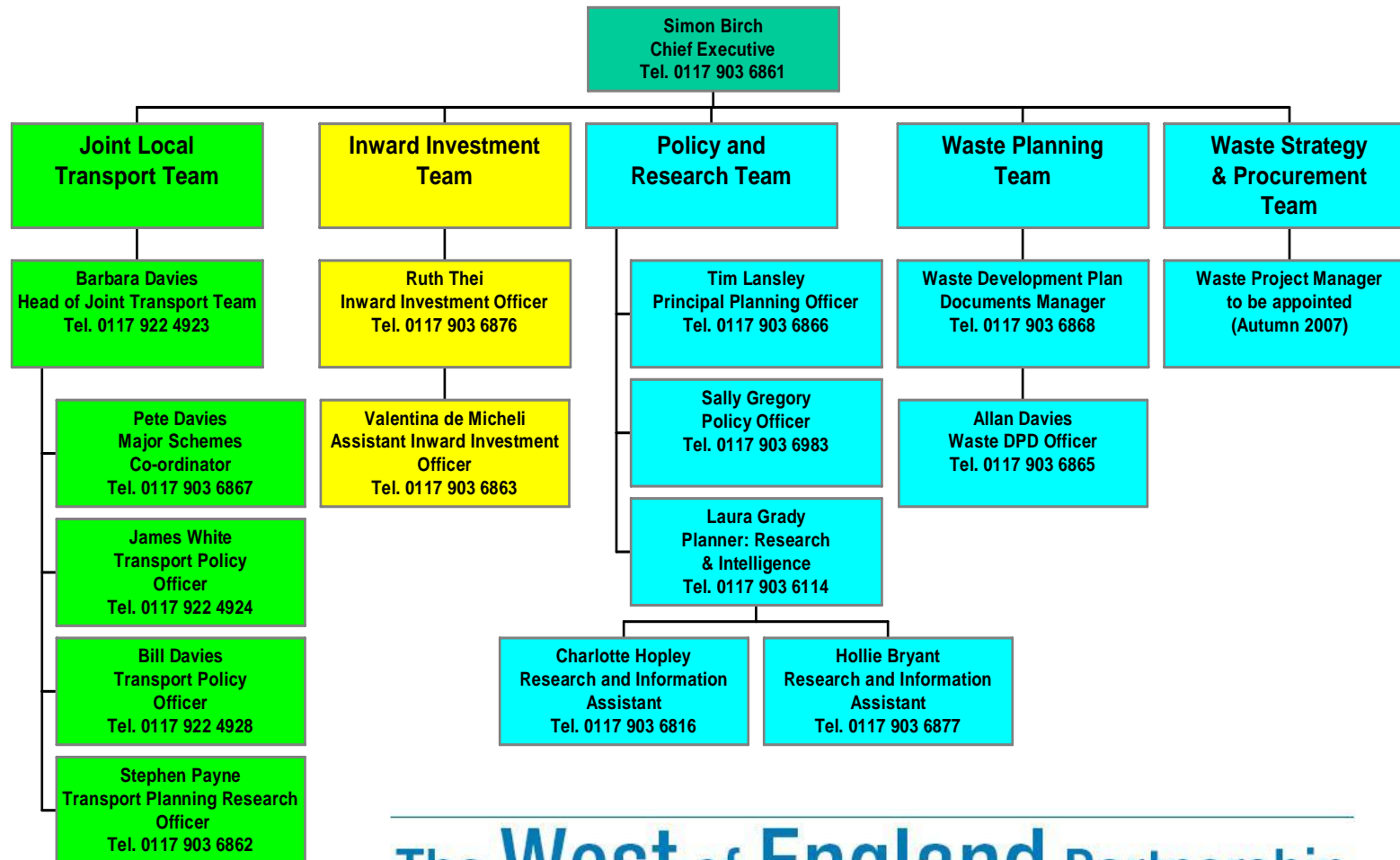
The **West of England** Partnership

West of England Partnership structure



The **West of England** Partnership

West of England Partnership office structure



High Levels of Projected Growth

	2006 Totals	Annual growth 2006 - 2026	Total growth 2006 - 2026
Jobs	520,000	5,000	100,000
Housing (Draft RSS; RPG+25%)	446,200	4,625	92,500
Population (Draft RSS)	1,024,500	4,925	98,500

The **West of England** Partnership

Importance of Infrastructure

- 2006 Study
- £4.5 billion required to 2006
- 75% transport and affordable housing
- Significant funding gap

New Growth Points

- Status in 2006 for 29 locations
- Linked to new housing
- 'Pilot' funding
- Future funding streams

Sub-Regional Delivery Plan

- Overall purpose
- National Audit Office Report
- Critical to support future funding