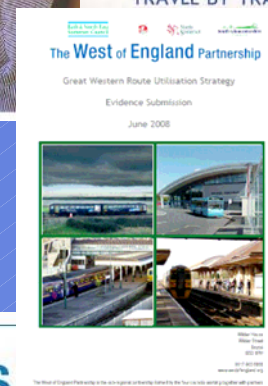
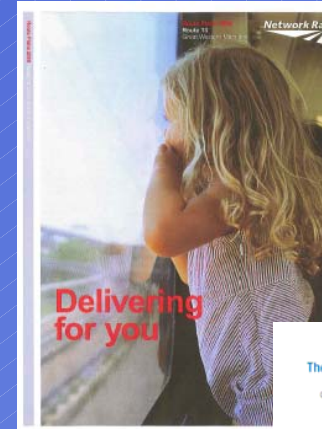


# Rail Update

James White  
West of England Partnership

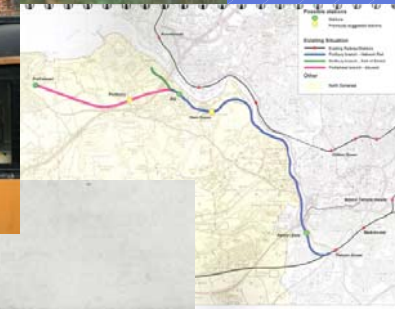
# Rail Update (1)

- Visit to Tom Harris
  - importance of rail
  - growth agenda
- Route Utilisation Strategy
  - Bristol Metro
  - growth agenda
- Office of Rail Regulation
  - Parkway 4<sup>th</sup> platform
  - Worle, Bath Spa
  - Yate, Weston



# Rail Update (2)

- Severn Beach
  - 3 trains every 2 hours
  - Sunday services
- Access for All
- Portishead
  - Study into viability
    - £7.5m - £15m capital
    - £0.4m - £0.9m subsidy
  - 3 miles of trackbed purchased

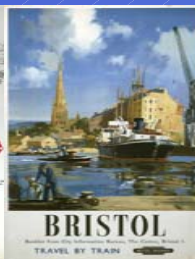




# Rail Update (3)



- December 2008 timetable changes
  - minor changes
- Cardiff to Portsmouth
  - bid for 11 four car trains
  - release 33 Class 158 other services
  - step towards 'Bristol Metro'



- Expanded web pages

