

Weston-super-Mare Package

5th Annual Joint Transport Forum

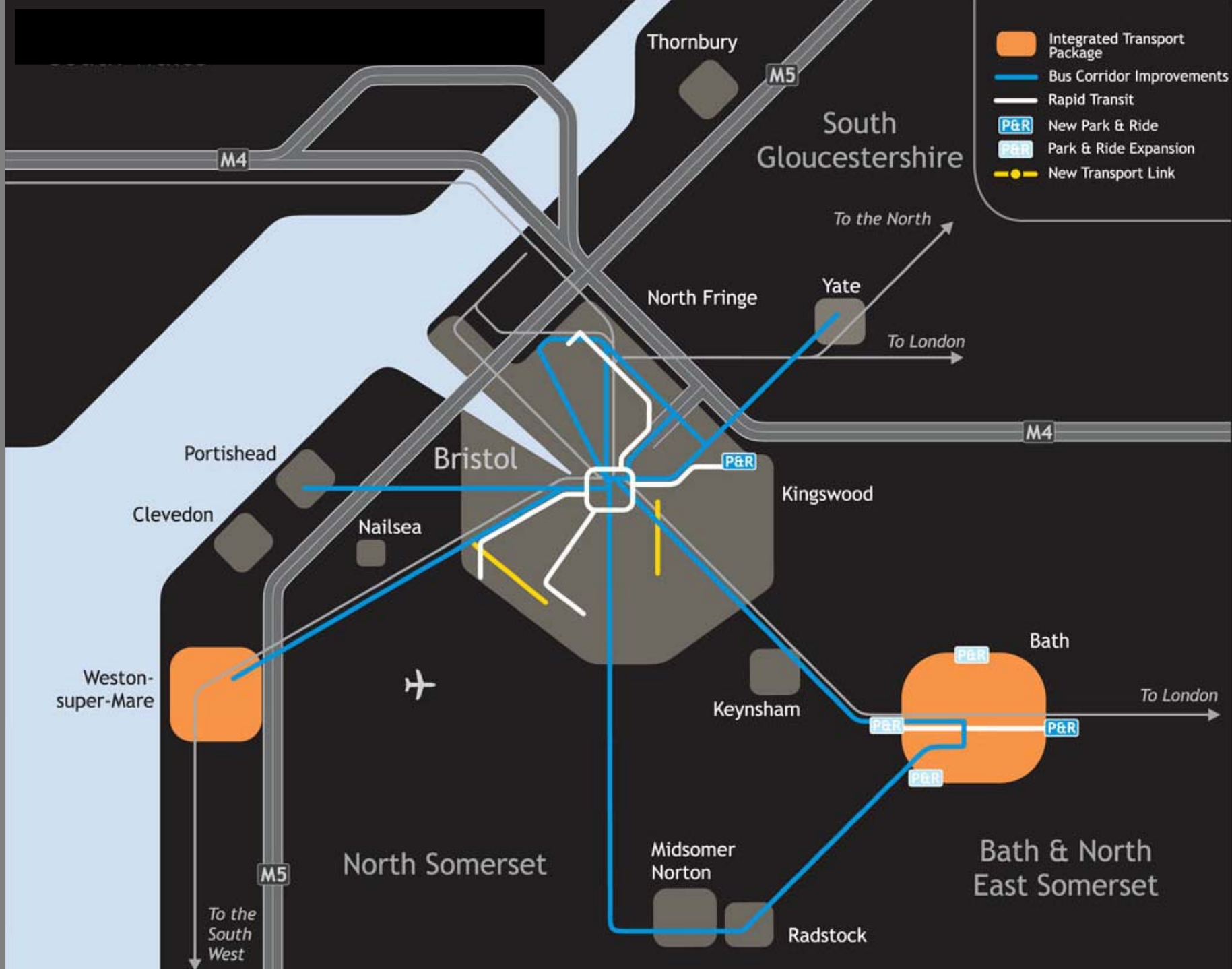
26 September 2008

Colin Medus

Head of Transport Policy and Programmes
North Somerset Council

**Bath & North East
Somerset Council**





- Integrated Transport Package
- Bus Corridor Improvements
- Rapid Transit
- New Park & Ride
- Park & Ride Expansion
- New Transport Link

South Gloucestershire

Thornbury

M5

M4

To the North

North Fringe

Yate

To London

M4

Portishead

Bristol

P&R

Kingswood

Clevedon

Nailsea

Weston-super-Mare



Keynsham

Bath

To London

P&R

P&R

P&R

P&R

North Somerset

Midsomer Norton

Bath & North East Somerset

Radstock

To the South West

M5

Overview:

Weston has

- ❑ a population of 80k and growing
- ❑ an employment growth not keeping up with residential growth
- ❑ out-commuting and M5-J21 issues

RSS requires ...

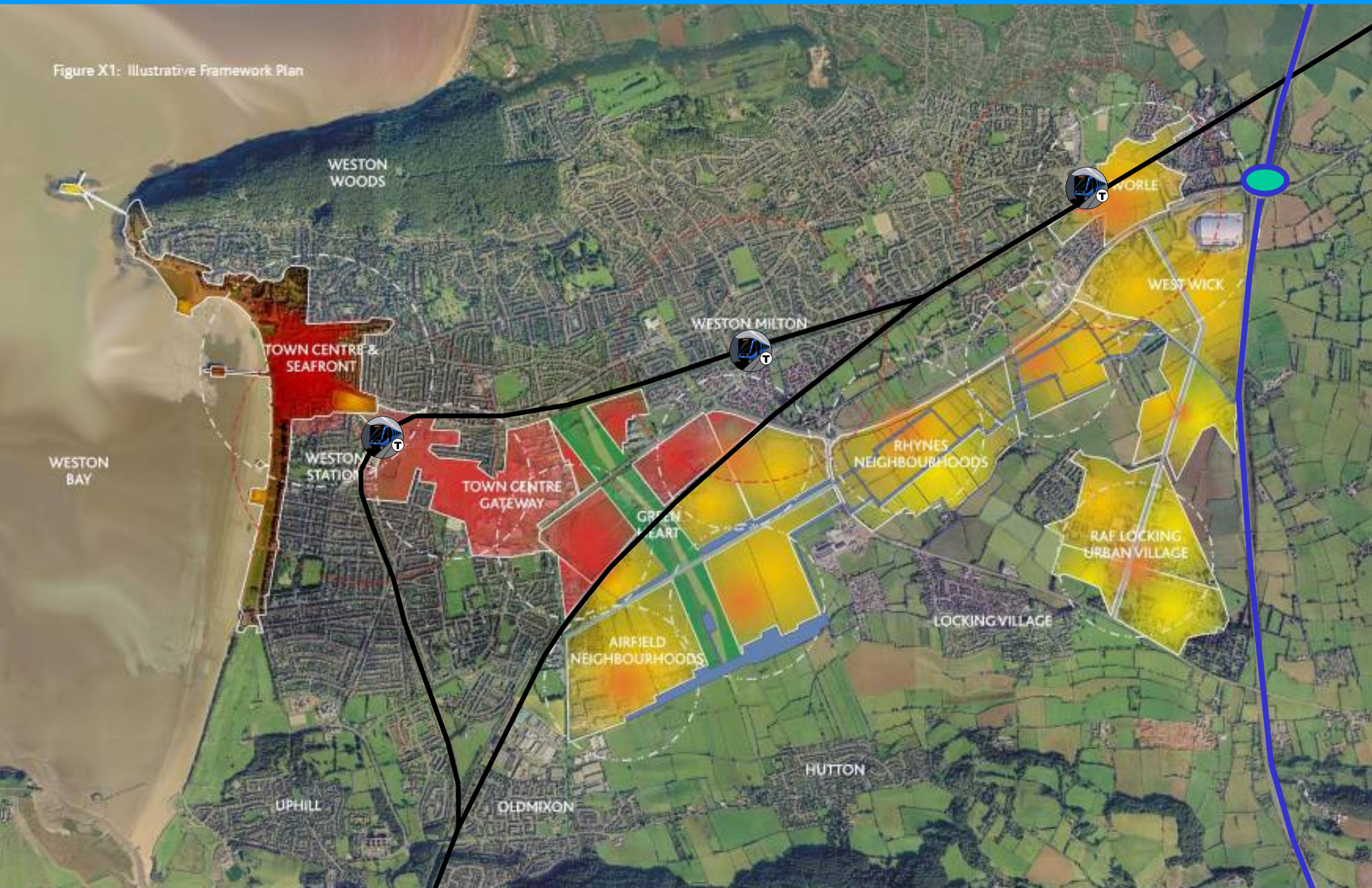
- ❑ 12,000 houses (9,000 & 3,000) and 10,000 jobs to 2026

Weston Package will

- ❑ promote sustainable living and working in Weston-super-Mare
- ❑ providing transport links to encourage employment development

Weston Regeneration Areas

Figure X1: Illustrative Framework Plan



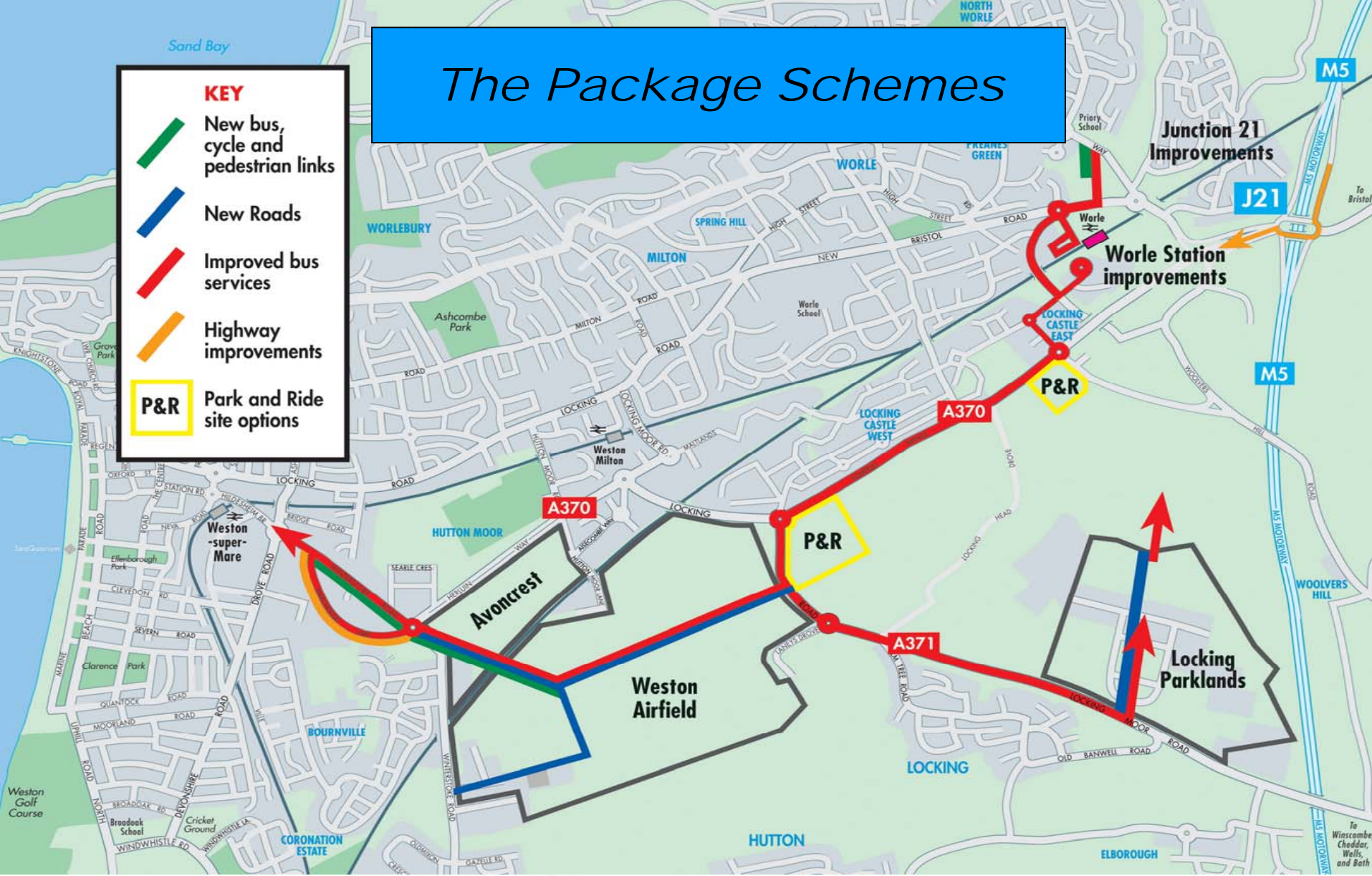
The Weston Package

- Capacity improvements at M5 J21
- Worle station enhancements
- ‘Gateway’ improvements
- New bus services
- Park and Ride

The Package Schemes

KEY

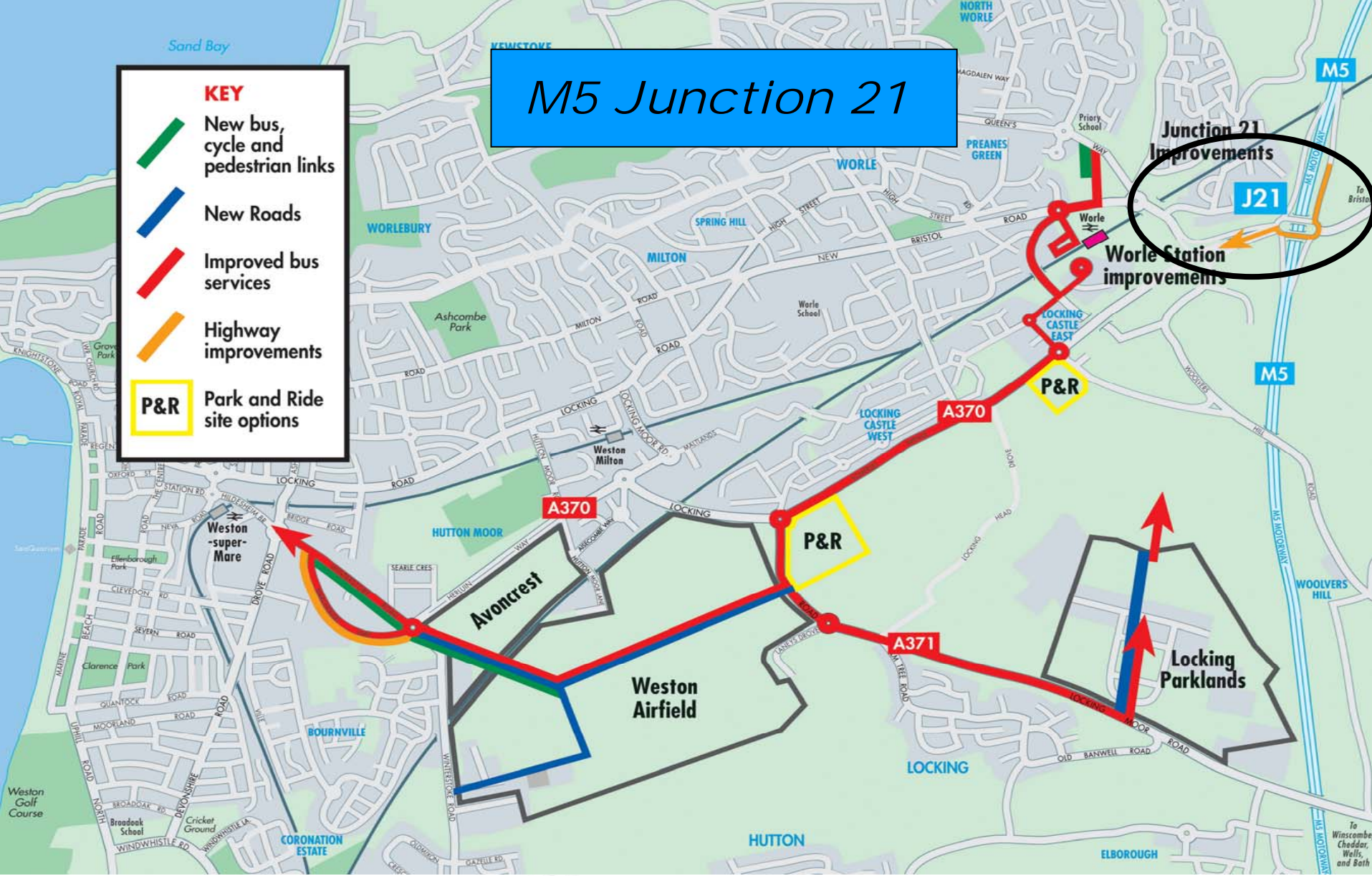
-  New bus, cycle and pedestrian links
-  New Roads
-  Improved bus services
-  Highway improvements
-  P&R Park and Ride site options



M5 Junction 21

KEY

-  New bus, cycle and pedestrian links
-  New Roads
-  Improved bus services
-  Highway improvements
-  P&R Park and Ride site options



M5 Junction 21

- ❑ improving access to WsM from the national road network
- ❑ key to improving the attractiveness of Weston to employers;
- ❑ limited improvements being considered
- ❑ Complements GBBN improvements at J21

Worle Station Improvements

Deliverable by NSC

- ✓ Car parking
- ✓ Bus interchange
- ✓ Improved bus access

bus priority from south, bus only route from north

Working with Network Rail /FGW

- ✓ Station facilities

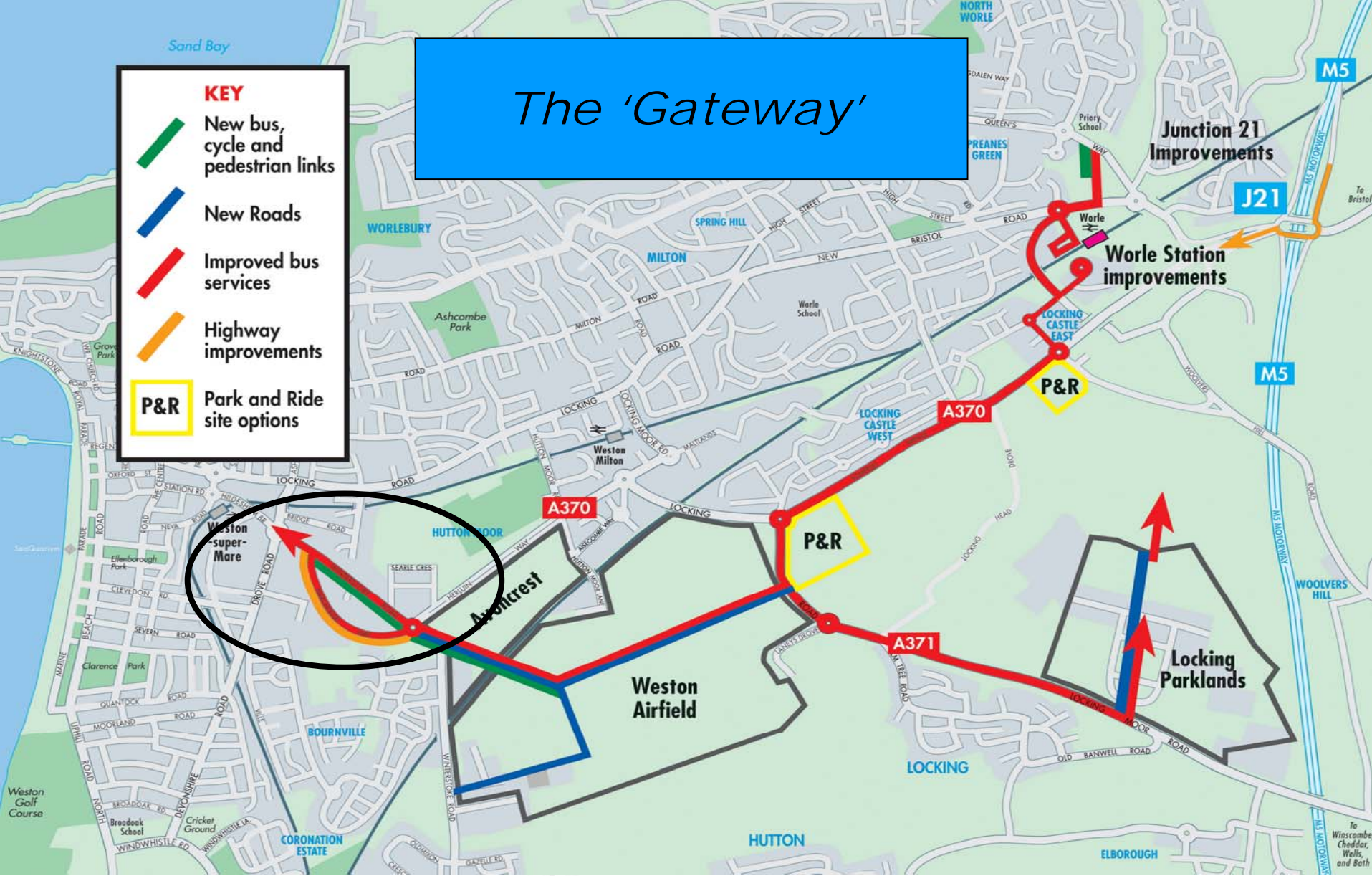
Improving access in a redeveloping town.....

- ❑ ‘breaking down the barriers’ – new rail crossing;
- ❑ P&R – alternative access to the town centre;
- ❑ improved bus services
 - linking Worle station, the redeveloping areas and the town centre

The 'Gateway'

KEY

-  New bus, cycle and pedestrian links
-  New Roads
-  Improved bus services
-  Highway improvements
-  P&R Park and Ride site options



The Gateway

.... Separating through and access traffic:

- upgrading Marchfields way for 2-way traffic
- downgrading Winterstoke Road – to improve local access and bus priority
- capacity improvements to Winterstoke and Drove Road roundabouts and bus priority at the latter

The Next Steps

- Further detailed design and analysis
- Report to NSC Executive December 08 – Joint Committee January 09;
- Finalise and submit bid – January 09
- DfT accepts bid – autumn 2009;
- Refine and update bid – 2009/10;
- Construction start – 2011/12;
- Complete 2015.