

1. ECONOMIC EVIDENCE

Economic and Quality of Life Indicators

FIGURE 1.1

		West of England	SW Region	Eng. & Wales	West of England				Core Cities						
					B&NES	Bristol	N.Som	S.Glos	Birmingham	Leeds	Liverpool	Manchester	New castle	Nottingham	Sheffield
Employment Rate % (All people Working Age)*	2007/8	78.4	78.5	74.4	78.1	73.8	82.9	83.2	63.1	73.0	63.5	60.4	65.2	63.7	70.4
Economic Activity Rate % (All people Working age)*	2007/8	81.0	81.6	78.6	81.1	76.6	84.9	85.8	69.6	78.1	68.0	67.4	70.5	68.9	74.8
Unemployment Rate % (All people economically active of working age)*	2007/8	3.3	3.9	5.4	3.7	3.6	2.4	3.0	9.4	6.6	6.7	10.4	7.5	7.6	5.9
Annual Earnings (£s' by full time employees and place of residence)**	2008	25,435 ^	23,930	25,363	25,637	23,855	26,824	25,424	22,877	23,711	22,874	22,847	22,250	20,367	23,535
% of working age population with NVQ4+ qualifications***	2007	32.6	29.1	28.1	33.8	36.5	32.1	25.4	24.7	27.6	20.1	30.3	30.4	21.8	27.9
GVA per head (£s)****	2006	22 377	17 386	19430 (UK)	25 345	20 447									
Growth in output (%)****	1995 - 2006	94.3	72.4	71.1 (UK)	79.6	108.0									
Growth in productivity (%)****	1995 - 2006	80.5	71.1	72.4 (UK)	71.2	90.0									
Net change in the Stock of VAT reg businesses (%)*****	2001-2007	15.2	11.8	12.9	12.7	15.7	17.4	14.8	5.8	12.8	15.8	6.6	13.5	8.0	8.7
Employment Growth Rate % *****	2001-2008	3.6	6.6	4.3	5.1	-4.2	7.1	16.7	-0.7	5.7	6.7	5.7	6.3	2.7	7.4

Sources:

* Annual population survey Jul 2007-Jun 2008, ONS, Crown Copyright.

** Annual Survey of Hours and Earnings, 2008. Nomis, ONS Crown Copyright.

*** Annual Population Survey Jan 2007 - Dec 2007. ONS Crown Copyright.

**** GVA at current basic prices 1995 - 2006. Nomis Regional Account NUTS level 3 table 3:2, ONS, Crown Copyright. West of England figures produced by the West of England Partnership Office, England & UK figures are provided instead of England & Wales and GB.

***** VAT registrations/deregistrations by industry. ONS Crown copyright. Net change. Net gain or loss in the stock of registered enterprises each year - equal to registrations less deregistrations.

***** Annual Business Inquiry (ABI) employee analysis 2001-2008.

Notes: ^ West of England Earnings figures are the mean average of the median UA figures, all others are median. West of England figures are therefore not directly comparable to the other figures as they would appear higher. There is no West of England Median figure. Median figures have still been used for UAs to avoid the skewing effects of extreme values.

FIGURE 1.2

GDP per head, employment and unemployment rates:

Region	City	GDP per Head	GDP (PPS per	Regional	Regional
		(000 Euros)*	inhabitant)**	employment rate	unemployment rate
		2001	2005	of the age group	of the age group 15-
				15-64 % **	64 % **
				2007	2007
Oberbayern	Munich	49.6	37090.8 ^(p)	74.5	4.3
Darmstadt	Frankfurt	47.7	35325.0 ^(p)	70.6	7.1
Etela-Suomi	Helsinki	41.5 ^(u)	29823.1	73.3	5.7
Stockholm	Stockholm	40.4	38573.5	76.0	5.6
Stuttgart	Stuttgart	38.5	31060.1 ^(p)	73.9	5.0
Lombardy	Milan	38.4	30566.9	66.7	3.4
Hovedstaden	Copenhagen	36.7 ^(d)	36073.1	:	:
Noord-Holland	Amsterdam	34.3	34647.4 ^(p)	76.7	2.9
Piemonte	Turin	33.2	25698.2	64.9	4.2
Catalonia	Barcelona	32.1	27345.5	71.0	6.5
Rhone-Alps	Lyon	30.2	25291.4	66.0	6.5
Glous, Wilts & N Som	Bristol	29.8	30003.1	77.4	3.4
Midi Pyrenees	Toulouse	27.9	22535.4	66.3	8.1
West Yorkshire	Leeds	26.7	24658.3	69.9	5.6
Greater Manchester	Manchester	25.5	24647.1	68.8	6.2
West Midlands	Birmingham	25.1	24658.3	65.3	8.0
Northumberland, Tyne & Wear	Newcastle	23.9	23546.9	67.9	6.2
South Yorkshire	Sheffield	23.9	20768.4	66.7	6.2
Merseyside	Liverpool	22.2	18987.5	64.1	7.4

Notes

(u) Figure is for Uusimaa

(d) Figure is for Denmark

(p) Figure is provisional

: no data available

PPS = Purchasing Power Standards

Sources

* Business Strategies Ltd What Makes Euro Regions Prosper 2001

** EuroStat

FIGURE 1.3

Best cities in terms of the quality of life for employees

City	Rank 2008	Rank 2007
Edinburgh	1	1
Cardiff	2	2
Bristol	3	5
Manchester	4	3
Newcastle upon Tyne	5	7

Source: UK Cities Monitor 2008 (Cushman & Wakefield)

FIGURE 1.4

Top 5 sustainable cities in Great Britain

Rank	City
1	Bristol
2	Brighton & Hove
3	Plymouth
4	Newcastle
5	Cardiff

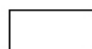

Source: The Sustainable Cities Index October 2008 (Forum for the Future)

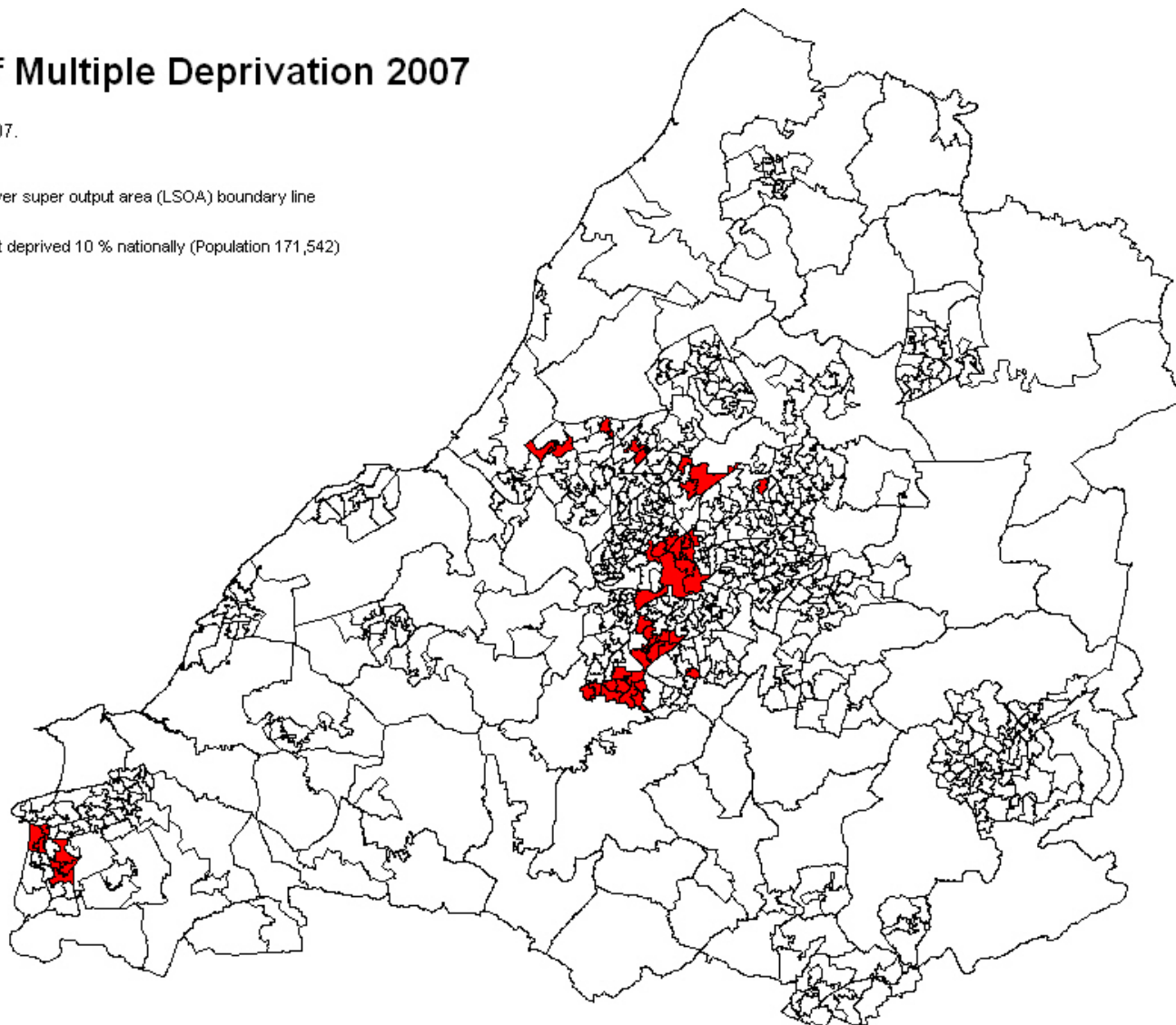
FIGURE 1.5

Wards within the West of England ranked within the worst deprived 10% nationally, IMD 2007

Index of Multiple Deprivation 2007

Source CLG 2007.

-  Lower super output area (LSOA) boundary line
-  Within most deprived 10 % nationally (Population 171,542)



This map is based upon Ordnance Survey material with the permission of Ordnance Survey on behalf of the Controller of Her Majesty's Stationery Office
© Crown copyright. Unauthorised reproduction infringes Crown copyright and may lead to prosecution or civil proceedings. (Bath & North East Somerset Council) (100023334) (2007).

FIGURE 1.6

Localities in the West of England falling within the 10% most deprived areas in England:*

UA	LSOA's	Contained within ward:	Total claimant rate May 08	Job Seekers claimant rate May 08	Incapacity Benefit claimant rate May 08	Unemployed claimant rate Oct 08	5 A* to C grades at gcse 2007
Bristol	St Pauls; St Agnes	Ashley	28.0	6.0	13.2	8.2	24.4
	Four Acres; Sherrin Way	Bishopsworth	28.3	3.6	14.3	3.3	-
	St James Barton	Cabot	25.5	4.3	17.9	4.7	66.7
	St Marks Road	Easton	24.1	3.8	12.7	5.2	32.0
	Throgmorton Road; Ilminster Avenue West; Filwood Broadway; Inns Court; Leinster Avenue; Glyn Vale	Filwood	34.0	3.1	17.5	3.9	29.0
	Gill Avenue	Frome Vale	30.2	3.2	14.0	2.9	40.0
	Fulford Road North; Whitchurch Lane; Fair Furlong; Bishport Avenue West; Withywood	Hartcliffe	32.2	3.3	17.0	3.6	42.2
	Crow Lane	Henbury	37.1	3.5	21.2	3.7	-
	Wharnecliffe Gardens	Hengrove	28.5	2.0	16.6	1.6	40.0
	Lawrence Weston South; Lawrence Weston Parade	Kingsweston	32.3	3.9	16.5	4.3	30.3
	Ilminster Avenue East	Knowle	26.3	3.3	13.4	1.9	35.0
	Easton Road; Old Market and the Dings; Barton Hill Road; Stapleton Road; St Philips; St Judes	Lawrence Hill	33.3	5.3	18.2	6.2	28.7
	Filton Avenue North; Lockleaze South; Lockleaze North	Lockleaze	26.3	3.1	14.7	3.5	30.2
	Southmead Central; Trymside	Southmead	32.4	4.7	15.3	5.2	24.3
	Bedminster	Southville	28.8	3.5	20.7	3.6	27.3
	Hareclive; Fulford Road South; Bishport Avenue East	Whitchurch Park	37.9	3.9	20.5	4.9	36.4
	Marksbury Road	Windmill Hill	24.0	3.5	13.5	3.1	23.1
North Somerset	Alfred Street; Grand Pier; Ellenborough Park	Weston-super-Mare Central	32.4	3.8	23.6	5.2	-
	Argyle Avenue; Windwhistle; Marchfields Way	Weston-super-Mare South	39.8	3.9	22.4	4.2	-
South West			11.4	1.2	1.7	1.7	59.2
West of England			11.4	1.7	1.3	1.6	56.2

* The figures represent an average for the localities shown, defined by LSOAs that fall within the 10% most deprived areas nationally, ranked according to the government's Index of Multiple Deprivation. The figures shown do not represent an overall average for the War

2. EMPLOYMENT TRENDS

FIGURE 2.1
Knowledge-based Growth Sectors 2006

Sector	No. of Employees
Advanced Engineering & Aerospace	13,000
Banking	25,000
Insurance & Pensions	12,000
Legal & Business Services	13,000
Creative & Media	18,000
ICT	18,000
Environmental Technologies	6,500
Biotechnology	2,000
Food & Drink	5,300
Tourism & Leisure	14,000

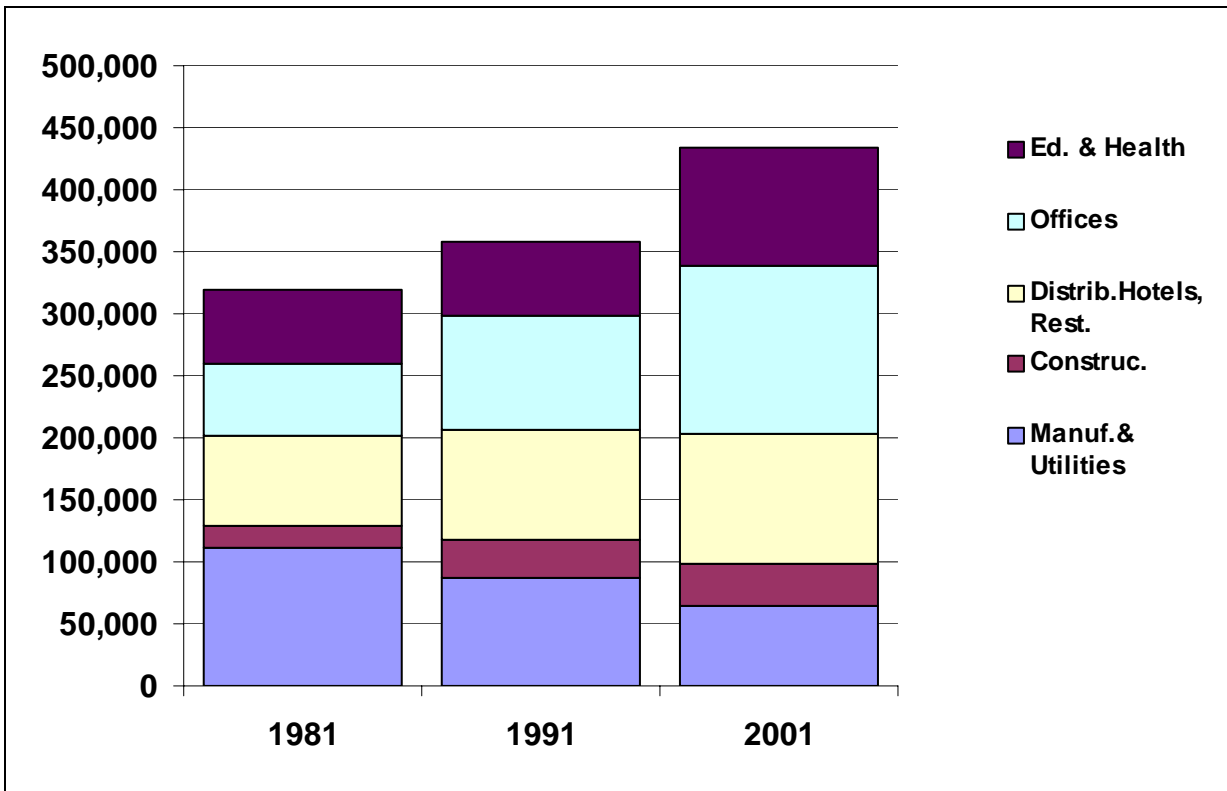
Source: ABI/NOMIS 2006

FIGURE 2.2
Employees in the 'Knowledge Based' economy. 2006.

	West of England		South West	GB
	No	%	%	%
'High tech manufacturing'	10,809	2.1	1.4	0.9
'Medium high-tech manufacturing'	7,086	1.4	2.8	2.3
'Knowledge based services'	224,279	43.8	39.5	40.9

Source: ABI/NOMIS using following OECD definition: **Hi-tech manufacturing** comprises pharmaceuticals, aerospace, electronics-communications, office machinery and computers; **Medium High Tech. manufacturing** comprises scientific instruments, motor vehicles, electrical machinery, chemicals, other transport equipment and non-electrical machinery; **Knowledge Based Services** comprises post and telecommunications, financial, insurance and business services, real estate, R&D, education, health and social services.

FIGURE 2.3
West of England- Changing sectoral make-up of employment



Source

e: Census of Population. Workplace data.

FIGURE 2.4

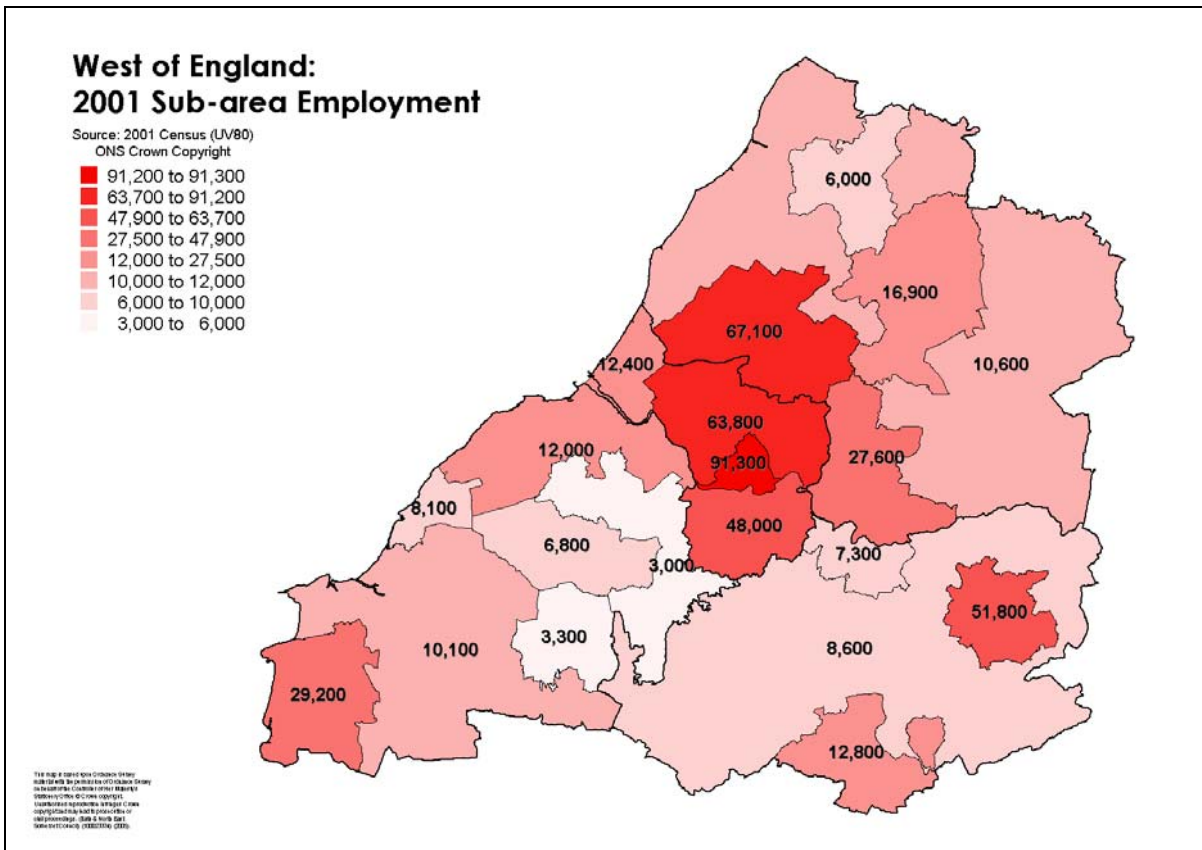
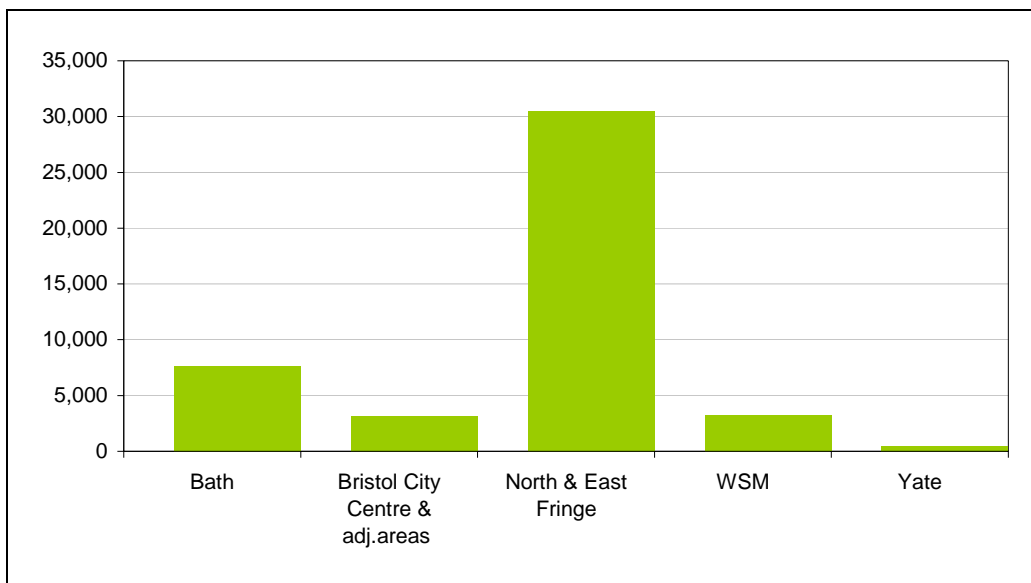


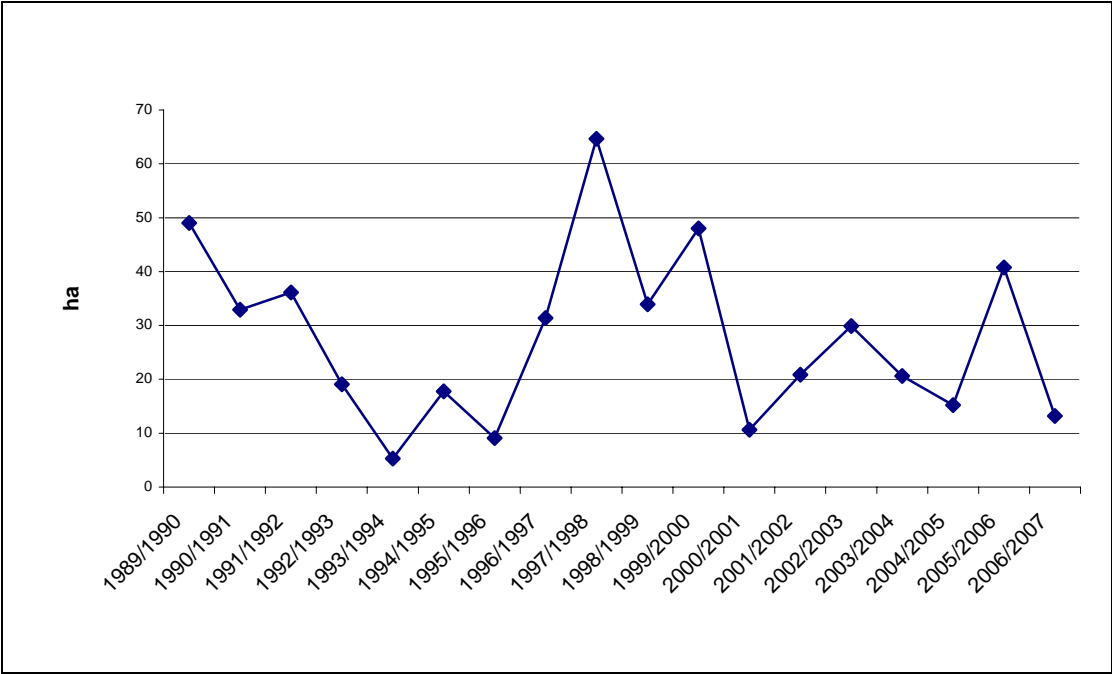
FIGURE 2.5
Main centres of employment growth 1991-2001



Source: Population Census 1999/2001

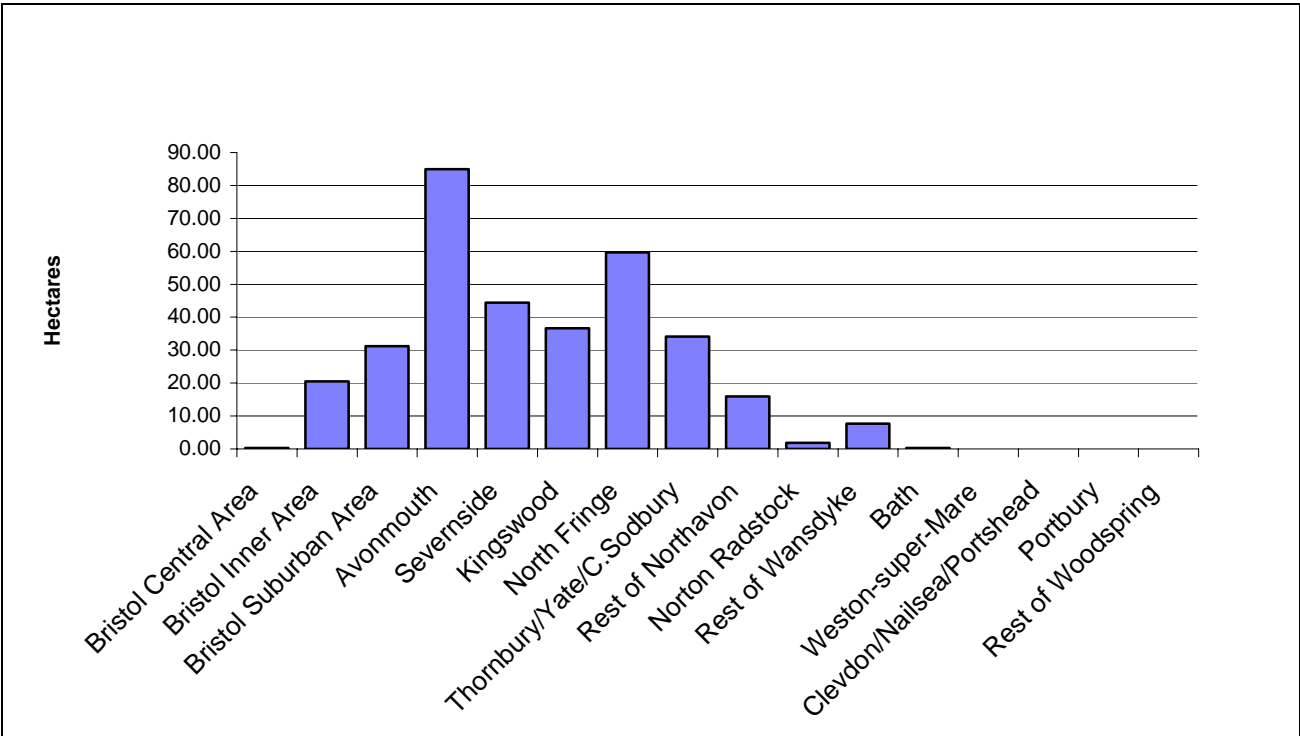
3. THE STOCK OF INDUSTRIAL AND OFFICE PROPERTY

FIGURE 3.1
Annual industrial development completions (ha.) 1989-2007
West of England



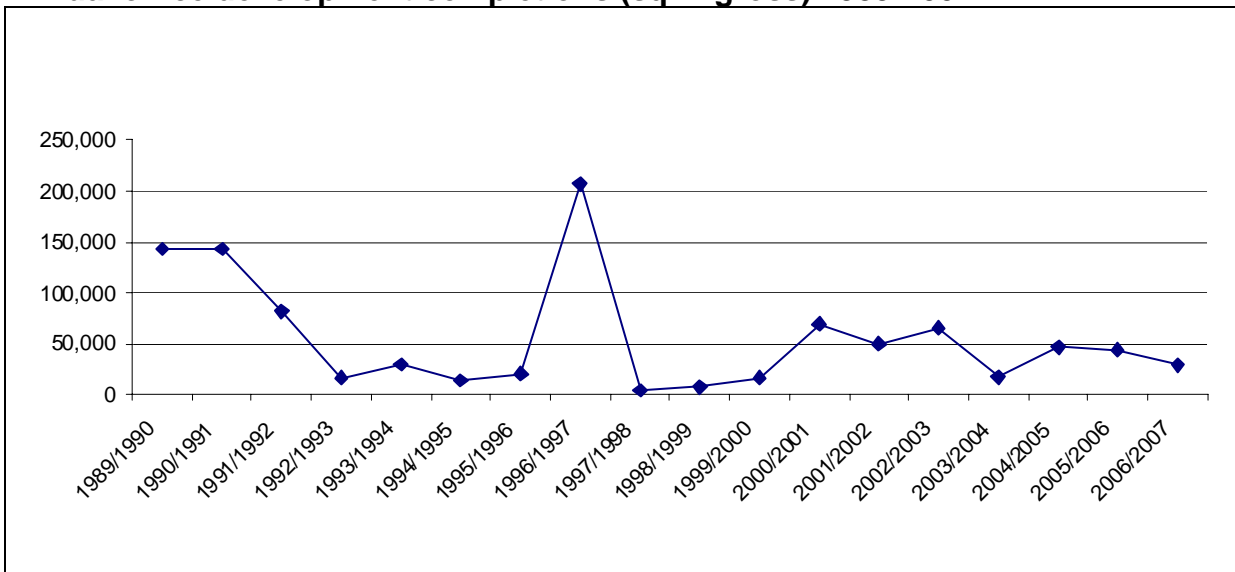
Source: Local authority employment land surveys 1989-2007

FIGURE 3.2: Industrial development completions (ha) 1989-2007.
West of England sub-areas.



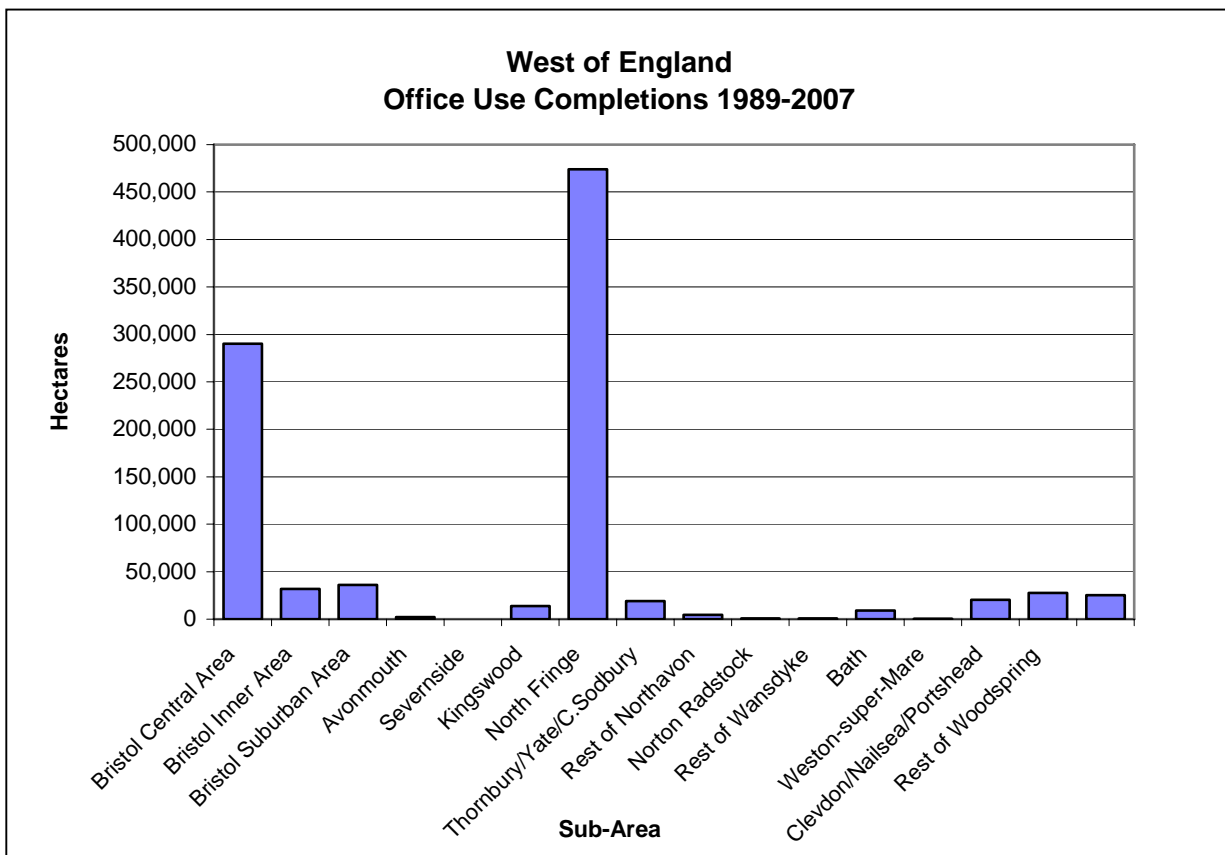
Source: Local authority employment land surveys.

FIGURE 3.3
Annual office development completions (sq m gross) 1989-2007



Source: Local authority employment land survey

FIGURE 3.4
Office development completions (sq m gross) 1989-2007



Source: Local authority employment land surveys

FIGURE 3.5:
Employment land allocations- April 2007

UA	Sub-area	Office(B1a) sq m gross f'spce	Industrial (B1bc,B2/8) ha.
B&NES	Bath*	19,733	0.09
	Keynsham**	26,654	11.09
	Rest of	8,644	10.96
	All	55,031	22.14
Bristol	Avonmouth	8,126	74.63
	Central Area	255,090	
	Inner Area	66,690	2.03
	Suburban Area	48,986	10.26
	All	378,892	86.92
N.Somerset	P'head, Clevedon, Nailsea	30,418	14.68
	WSM	16,310	123.04
	Rest of	16,613	89.73
	All	63,341	227.45
S.Glos.	Severnside		295.57
	North Fringe	95,147	73.48
	East Fringe	20,029	54.16
	Yate/T'bury/C.Sodbury	15,875	17.46
	Rest of	2,261	1.99
	All	133,312	442.66
West of England		630,576	779.17

Source: Local authority employment land surveys.

Notes: South Glos totals include sites that may be under the threshold of 1,000 sq m floor space and 0.4 hecatres.

B&NES totals are for 2006 and subject to review.

* Potential additional 46,000 sq m allocated office space at Western Riverside.

** Includes 24,860 sq m allocated office space and 11ha of allocated floorspce at Somerdale.

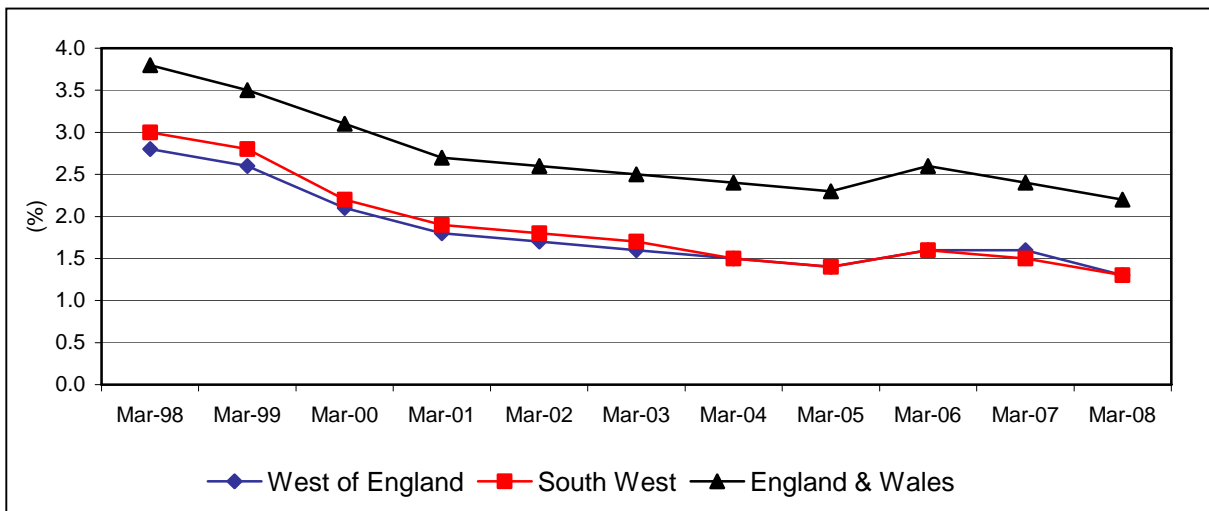
4. UNEMPLOYMENT

FIGURE 4.1
Unemployment rates: 2000-2007

	Mar 2002-Feb 2003		Mar 2003-Feb 2004		Apr 2004-Mar 2005*		Apr 2005-Mar 2006*		Apr 2006-Mar 2007*	
	Number	%	Number	%	Number	%	Number	%	Number	%
West of England	17,000	3.5	16,900	3.4	19,700	3.9	17,100	3.4	16,900	3.3
South West	90,000	3.8	84,000	3.5	85,300	3.6	83,400	3.5	96,400	4.0
England & Wales	1,270,000	5.1	1,240,400	4.9	1,194,200	4.7	1,288,900	5.1	1,387,700	5.5
Great Britain	1,431,000	5.2	1,383,600	5.0	1,325,700	4.8	1,425,500	5.1	1,520,700	5.4

Source: Office for National Statistics Local Area Labour Force data and *Annual Population Survey data Unemployment Rate (ILO).
© Crown Copyright.

FIGURE 4.2
Persons claiming job seekers allowance: long-term trends
West of England, South West and GB



Source: NOMIS: National Statistics Crown Copyright 2008.

FIGURE 4.3
Persons claiming job seekers allowance: Recent trends

Area	Jan 08		Feb 08		Mar 08		Apr 08		May 08		Jun 08		Jul 08		Aug 08		Sept 08		Oct 08		Nov 08		Dec 08		% Change Jan 08 - Dec 08
	#	rate	#	rate	#	rate	#	rate	#	rate	#	rate	#	rate	#	rate	#	rate	#	rate	#	rate	#	rate	
B&NES	981	0.9	1,005	0.9	997	0.9	985	0.9	992	0.9	1,018	0.9	1,053	0.9	1,217	1.1	1,222	1.1	1,307	1.2	1,452	1.3	1,570	1.4	60.0
Bristol	4,965	1.8	5,057	1.8	5,116	1.8	5,132	1.8	5,225	1.8	5,329	1.9	5,601	2.0	6,070	2.1	6,134	2.2	6,252	2.2	6,877	2.4	7,349	2.6	48.0
N.Somerset	1,143	0.9	1,177	1.0	1,194	1.0	1,176	1.0	1,202	1.0	1,215	1.0	1,314	1.1	1,537	1.3	1,590	1.3	1,652	1.4	1,879	1.6	2,061	1.7	80.3
South Glos.	1,198	0.8	1,287	0.8	1,236	0.8	1,250	0.8	1,236	0.8	1,292	0.8	1,399	0.9	1,601	1.0	1,680	1.1	1,740	1.1	1,967	1.2	2,300	1.4	92.0
West of England	8,287	1.2	8,526	1.3	8,543	1.3	8,543	1.3	8,655	1.3	8,854	1.3	9,367	1.4	10,425	1.5	10,626	1.6	10,951	1.6	12,175	1.8	13,280	2.0	60.3
South West	41,126	1.3	42,393	1.4	41,412	1.3	40,723	1.3	40,729	1.3	40,964	1.3	43,610	1.4	48,017	1.5	49,241	1.6	52,180	1.7	59,490	1.9	66,710	2.1	62.2
England & Wales	732,020	2.2	748,187	2.2	743,046	2.2	736,789	2.2	734,806	2.2	736,136	2.2	765,992	2.3	812,253	2.4	833,688	2.5	856,480	2.5	931,993	2.8	1,019,789	3.0	39.3

Source: Claimant count rates and proportions ONS Crown Copyright.

Claimant rate (% resident working age population) Jan 2008 - Dec 2008

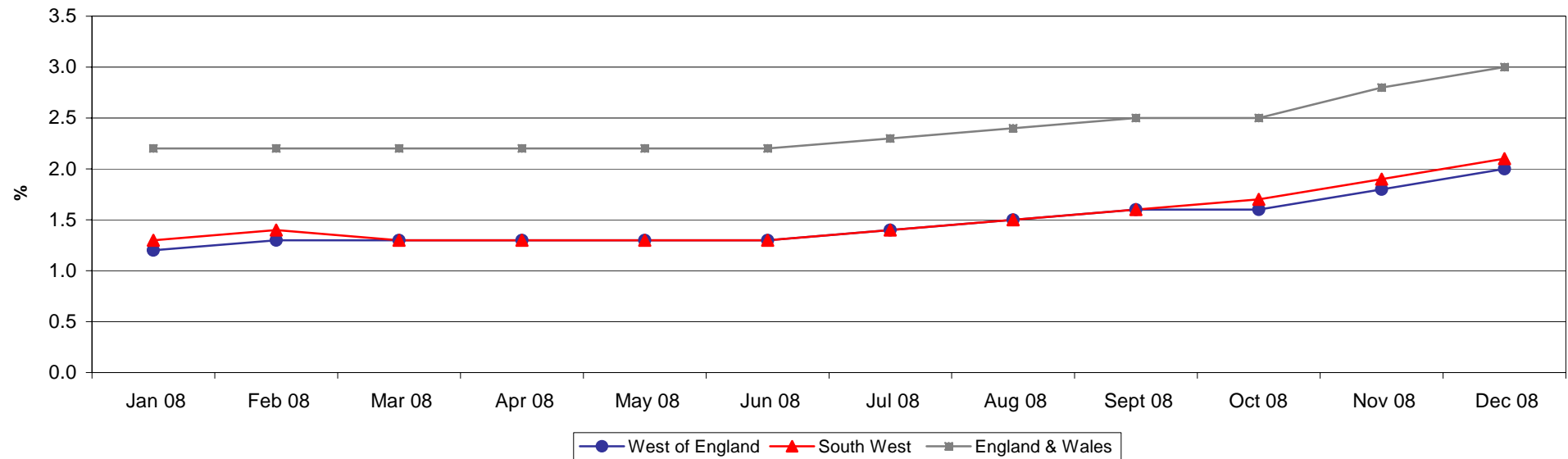


FIGURE 4.4
Persons claiming job seekers allowance for 12 months+

	Unemployed claimants for 12 months +			
	1998 (Dec.)		2008 (Dec.)	
	No.	% of all unemployed claimants	No.	% of all unemployed claimants
B&NES	370	17.2	70	4.5
Bristol	2,020	22.0	470	6.4
N.Somerset	315	15.4	85	4.1
S.Glos	310	16.6	90	3.9
W of England	3,015	19.8	715	5.4
SW	17,645	21.7	3,560	5.3
Eng. & Wales	284,695	25.7	91,225	8.9

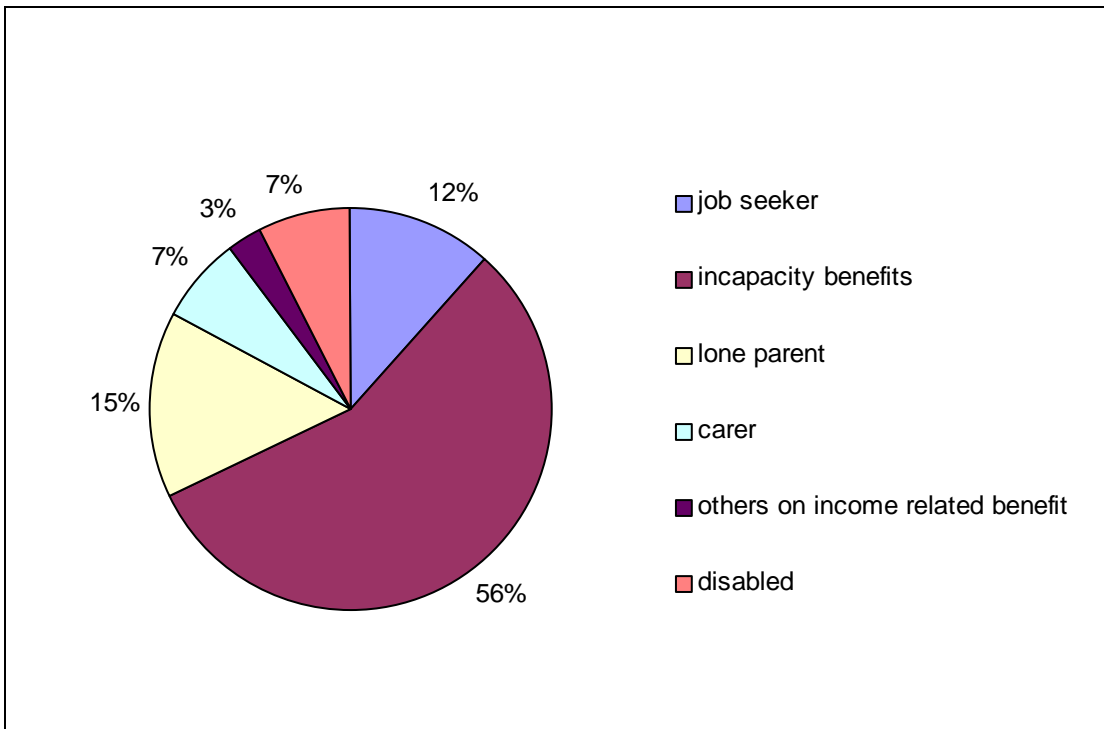
Source: Nomis Claimant count.

FIGURE 4.5
Persons claiming job seekers allowance aged 24 and under

	Unemployed claimants aged 24 and under			
	1998 (Dec.)		2008 (Dec.)	
	No.	% of all unemployed claimants	No.	% of all unemployed claimants
B&NES	475	22.1	490	31.2
Bristol	1,975	21.6	2,235	30.4
N.Somerset	440	21.5	620	30.1
S.Glos	395	21.1	760	33.0
W of England	3,275	21.5	4,090	30.8
SW	18,910	23.2	20,760	31.1
Eng. & Wales	263,720	23.8	313,270	30.7

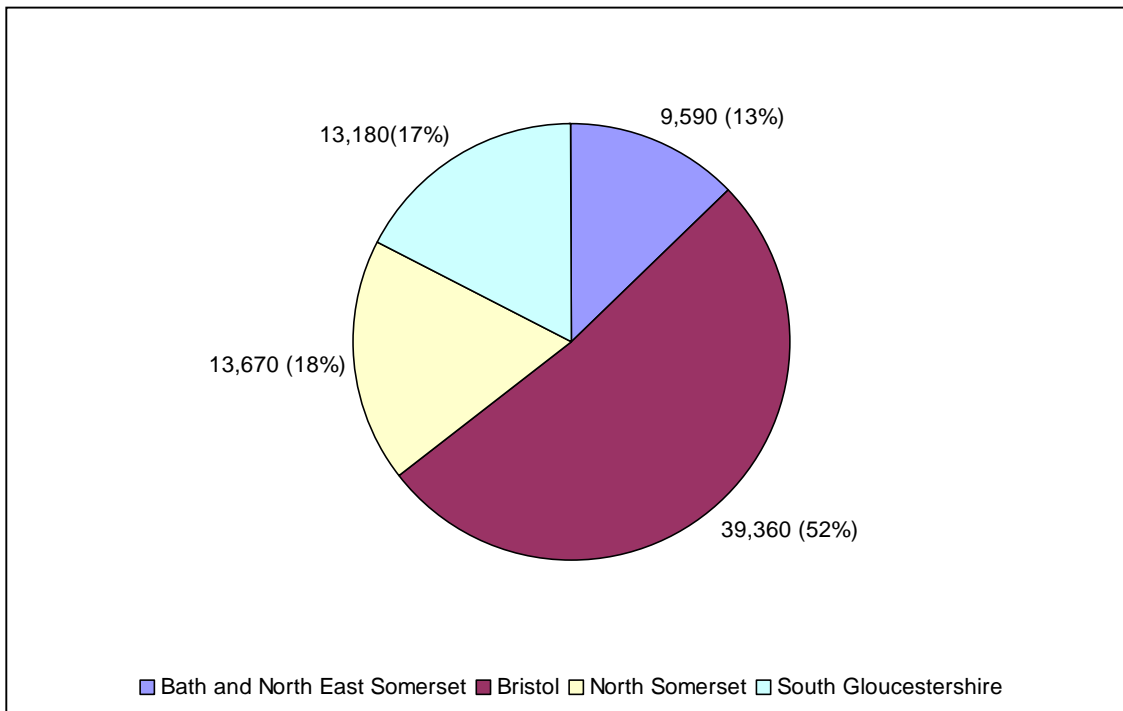
Source: Nomis Claimant Count.

FIGURE 4.6
Working age claimant groups in the West of England, May 2008



Source: DWP, Work and Pensions Longitudinal Study. Note: State pension, pension credits, lone parent, attendance allowance and other income related allowance excluded.

FIGURE 4.7
Persons of working age claiming benefit
West of England by district- May 2008



Source: DWP, Work and Pensions Longitudinal Study. Nomis, ONS Crown Copyright.

FIGURE 4.8
Persons of working age claiming benefit

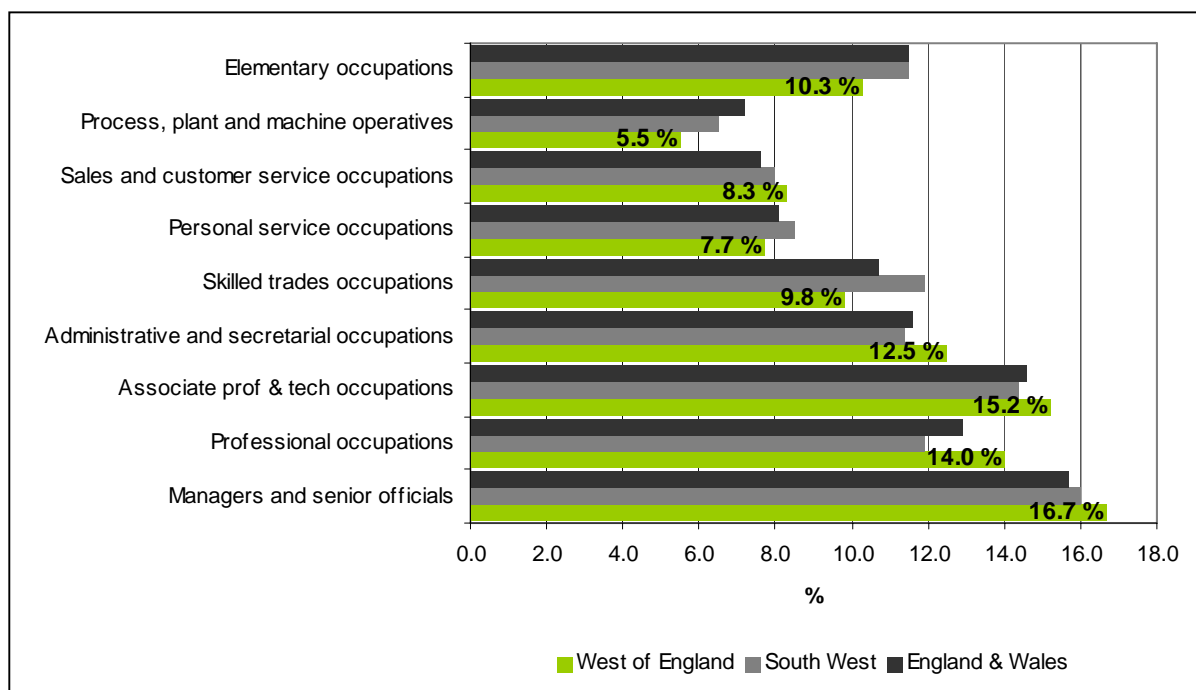
Thousands

	May-00	May-01	May-02	May-03	May-04	May-05	May-06	May-07	May-08	% change 00-08
West of England	71.71	70.83	73.84	74.82	73.34	73.56	75.63	75.82	75.8	5.7
South West	346.86	340.71	357.56	359.94	352.32	352.74	360.25	356.92	355.61	2.5
England & Wales	4744.51	4648.13	4827.45	4838.03	4724.04	4703.99	4751.92	4652.67	4605.02	-2.9

Source: Nomis. DWP Benefits.

5. OCCUPATIONAL TRENDS, QUALIFICATIONS, SKILLS, TRAINING

FIGURE 5.1
West of England Occupational Structure 2007 (Workplace Based)



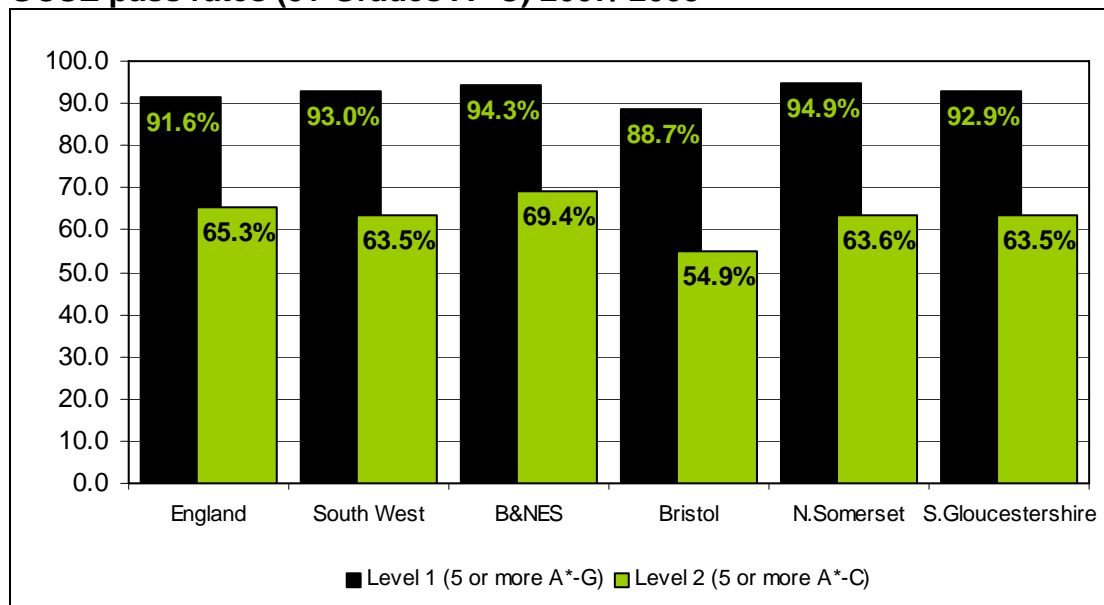
Source: Annual Population Survey - workplace analysis October 2006 - September 2007, Nomis, ONS Crown Copyright

FIGURE 5.2
GCSE pass rates (5+ Grades A*-C) 2000-2007

LEA	2000/01	2001/02	2002/03	2003/04	2004/05	2005/06	2006/07	2007/08
B&NES	57.1%	56.4%	58.4%	60.0%	60.2%	63.5%	66.9%	69.4%
Bristol	31.2%	31.8%	31.0%	35.3%	35.1%	36.5%	43.8%	54.9%
N.Som	53.4%	50.8%	53.3%	54.8%	55.0%	57.4%	58.4%	63.6%
S.Glos	47.7%	48.7%	52.4%	54.1%	50.0%	55.5%	54.9%	63.5%
England	49.2%	50.0%	51.6%	52.9%	53.7%	57.1%	59.2%	65.3%

Source: Dfes School performance Tables 2008.

FIGURE 5.3
GCSE pass rates (5+ Grades A*-C) 2007/ 2008



Source: Dfes School performance Tables 2008.

FIGURE 5.4
Higher Education students in the West of England 2005

	1995/96	2006/07	Increase 1995/1996- 2006/2007
<i>All students</i>			
Bath Spa University College	2,696	7,110	4,414
The University of Bath	8,044	14,255	6,211
The University of Bristol	17,566	22,780	5,214
University of the West of England, Bristol	18,723	29,760	11,037
TOTAL West of England all	47,029	73,905	26,876
<i>Full-time students</i>			
Bath Spa University College	2,137	4,720	2,583
The University of Bath	5,736	10,020	4,284
The University of Bristol	10,730	14,630	3,900
University of the West of England, Bristol	13,415	19,695	6,280
TOTAL West of England full-time	32,018	49,065	17,047
<i>Part-time students</i>			
Bath Spa University College	559	2390	1,831
The University of Bath	2,308	4,235	1,927
The University of Bristol	6,836	8,145	1,309
University of the West of England, Bristol	5,308	9,910	4,602
TOTAL West of England part-time	15,011	24,680	9,669

Source: Copyright © Higher Education Statistics Agency Limited 2006

FIGURE 5.5
Numbers of departments graded 5/5* within West of England universities, 2001.

University	No. of departments achieving Grade 5*	Subject of Departments	No. of departments achieving Grade 5	Subject of Departments
Bath University	3	Pharmacy, Maths, Mechanics/Aeronautical	8	Business Management, Maths, Stats, Social Policy, Education, Biology
Bristol University	15	Mostly sciences and health also Maths, Stats, Civil Engineering, Education, Drama, Russian, Psychology, Social Work and Geography	21	Languages, sciences, music, Theology, Philosophy, Mechanical/Aeronautical, Electrical Engineering, Accounting and finance, law, Politics and Classics.
University West of England	0		1	Accounting/Finance

Source: HEFCE Research Assessment Exercise, 2001

FIGURE 5.6
Qualifications held by people of working age Jan-Dec 2007 (%).

	None	NVQ1	NVQ2	Trade Apprenticeships	NVQ3	NVQ4+	Other Qualifications	All
B&NES	7.3	10.5	17.0	3.7	19.8	33.8	7.9	100.0
Bristol	10.7	12.9	14.0	2.7	14.6	36.5	8.6	100.0
N Somerset	8.1	16.9	16.5	3.8	17.5	32.1	5.0	100.0
S Glos	8.4	15.2	17.3	5.5	17.1	25.4	11.0	100.0
W of England	9.1	13.8	15.7	3.8	16.6	32.6	8.4	100.0
GB	13.1	13.6	15.9	4.5	15.6	28.6	8.8	100.0
South West	9.5	14.5	16.6	4.7	17.8	29.1	7.9	100.0

Source: Annual Population Survey Jan-Dec 2007 ONS Crown Copyright Reserved

Notes:

1. None: No formal qualifications held
2. Other qualifications: includes foreign qualifications and some professional qualifications
3. NVQ 1 equivalent: e.g. fewer than 5 GCSEs at grades A-C, foundation GNVQ, NVQ 1, intermediate 1 national qualification (Scotland) or equivalent
4. NVQ 2 equivalent: e.g. 5 or more GCSEs at grades A-C, intermediate GNVQ, NVQ 2, intermediate 2 national qualification (Scotland) or equivalent
5. NVQ 3 equivalent: e.g. 2 or more A levels, advanced GNVQ, NVQ 3, 2 or more higher or advanced higher national qualifications (Scotland) or equivalent
6. NVQ 4 equivalent and above: e.g. HND, Degree and Higher Degree level qualifications or equivalent..

6. LONG-TERM EMPLOYMENT AND DEMOGRAPHIC PROJECTIONS AND FORECASTS

FIGURE 6.1
West of England
Employment projections 2006 to 2026

	1986 000's	2006 000s	2026 000s	2006-26	
				000s	%
B&NES	84.4	102.1	123	20.9	17.0
Bristol	253.1	283.4	325.9	42.5	13.0
N.Somerset	60.6	84.7	100.4	15.7	15.6
S. Glos.	92.1	157	194.7	37.7	19.4
W. of England	490.2	627.2	744	116.8	15.7
S.West	2083.4	2613.3	3077.3	464	15.1

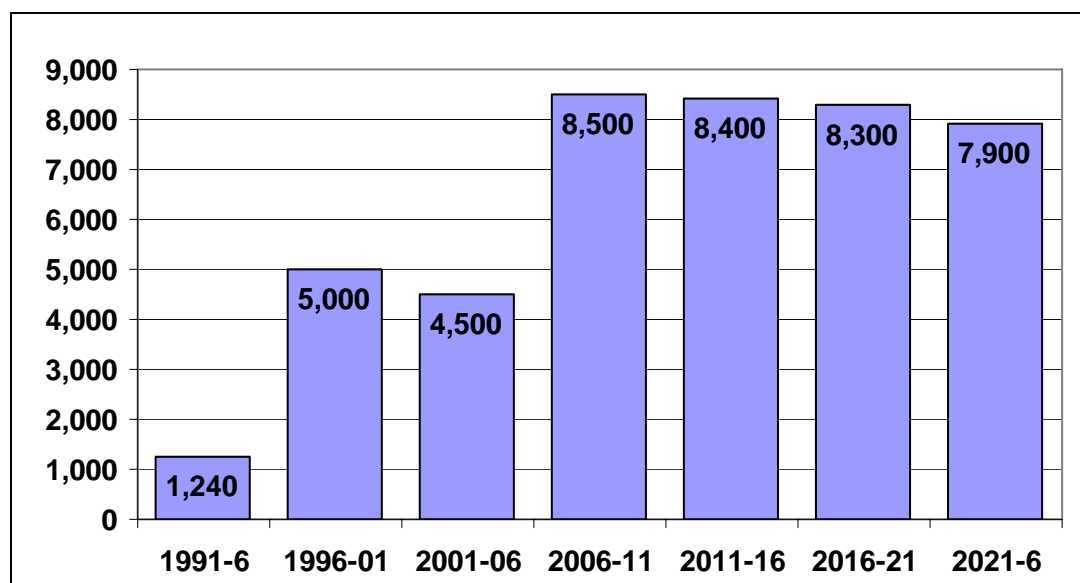
Source: Cambridge Econometrics for SWRA March 2008

FIGURE 6.2
Regional Spatial Strategy Proposed Housing Numbers

Area	Draft RSS Allocation 2006-2026	Draft RSS Panel Recommendations 2006-2026	Secretary of State Proposed Changes 2006-2026
B&NES	15,500	18,800	21,300
Bristol	28,000	30,000	36,500
North Somerset	26,000	26,750	26,750
South Gloucestershire	23,000	30,800	32,800
West of England Sub-region	92,500	106,350	117,350

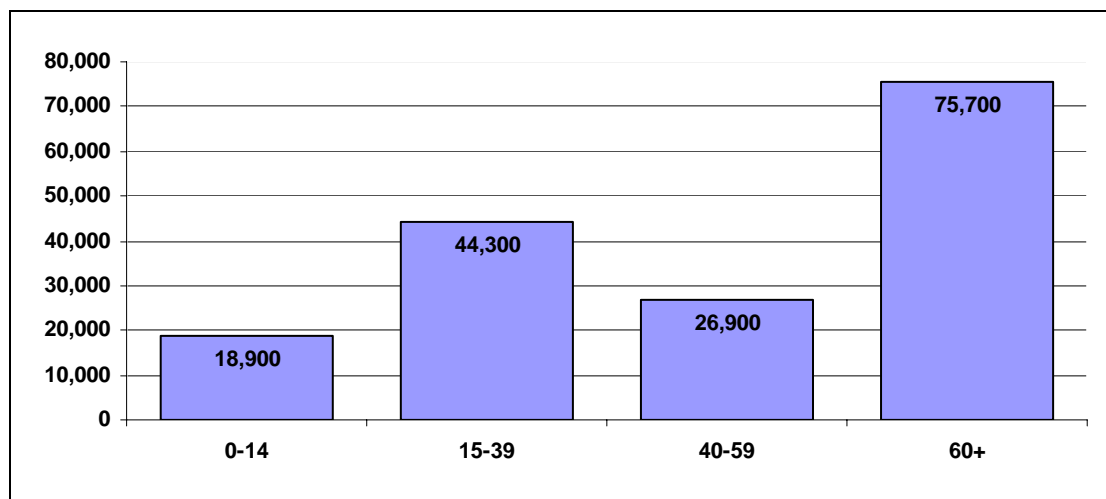
Source: Regional Spatial Strategy 2006, EIP Panel Report 2007

FIGURE 6.3
West of England- population growth - Revised 2004- based projections
Annual Average changes



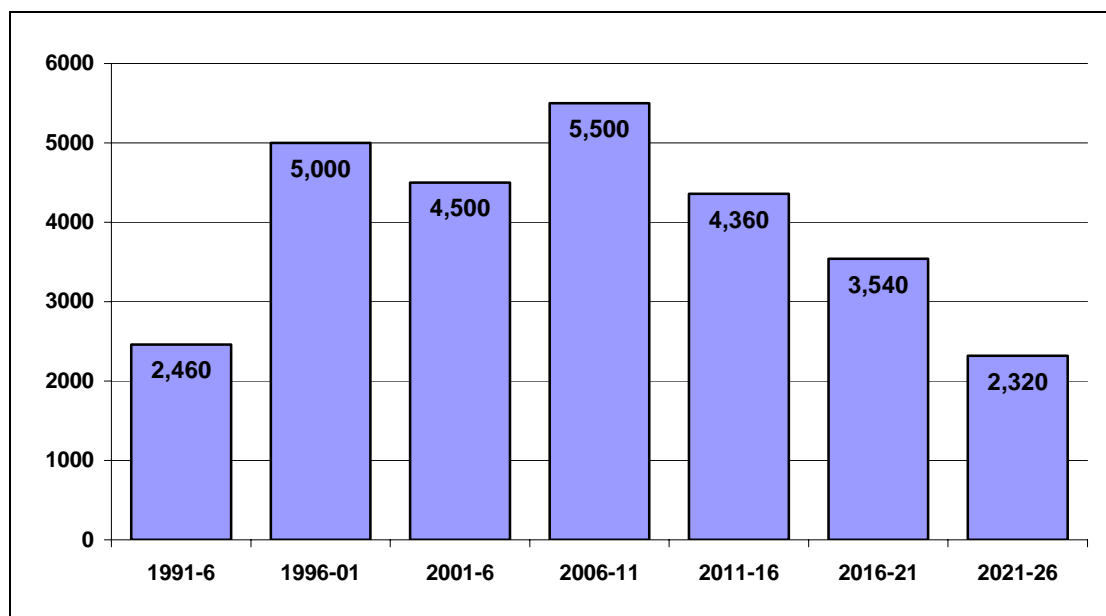
Source: ONS Mid-year estimates/2004-based sub-national population projections.

FIGURE 6.4
West of England – Change in population by age group, 2006-2026.
Revised 2004-based projections



Source ONS Revised 2004-based sub-national population projections.

FIGURE 6.5
West of England – Annual average increase in working age population.
Revised 2004-based projections



Source: ONS: Mid-year population estimates/Revised 2004 based sub-national population projections

APPENDIX 2

Multi-Area Agreement (MAA) and Local Area Agreement (LAA) Targets																														
MAA Objective	MAA Indicator	Bath & North East Somerset						Bristol					North Somerset					South Gloucestershire												
		2008/09	2009/10	2010/11	Designated target in LAA (2)	Stretch Target in LAA (1)	Local Target	2008/09	2009/10	2010/11	Designated target in LAA (2)	Stretch Target in LAA (1)	Local Target	2008/09	2009/10	2010/11	Designated target in LAA (2)	Stretch Target in LAA (1)	Local Target	2008/09	2009/10	2010/11	Designated target in LAA (2)	Stretch Target in LAA (1)	Local Target					
Plan and manage growth in homes, jobs and communities	Supply of ready to develop housing sites (NI 159)	77%	81%	94%	Y		100%	100%	100%	Y			99% of the RSS annual requirement of dwellings	101% of the RSS annual requirement of dwellings	108% of the RSS annual requirement of dwellings	Y			105%	117%	120%	Y								
	Net additional homes provided (NI 154)	283	668	736	Y		1471	1471	1471	Y			1210	1220	1060	Y			860	970	1410	Y								
Improve access and reduce traffic congestion	Congestion on key routes: average journey time per mile during the morning peak (NI 167)	8%	11%	13%	Y		Bristol will contribute to the current Joint Local Transport Indicator as set out in the MAA					Y			WofE targets					Y			WofE targets					Y		
	Local bus passenger journeys originating in the authority area DfT(NI 177)	56,057	56,337	56,883	Y	Y					Y			WofE targets					Y			WofE targets					Y			
Increase skills; reduce worklessness	Working age people on out of work benefits (NI 152)						Y	12.3% (reduction from baseline of 0.25%)	11.9% (reduction from baseline of 0.5%)	11.6% (reduction from baseline of 1%)	Y																			
	Working age population qualified to at least Level 2 or higher (NI 163)						Y	71.30%	72.00%	72.7% (subject to review in 08/09 LAA refresh)	Y						Y	Y	73.40%	74.60%	75.90%	Y								
	16 to 18 year olds not in education, training or employment (NEET) (NI 117)	3.90%	3.80%	3.70%	Y	Y	7.10%	6.90%	6.40%	Y			4.5% (with stretch)	4.3% (with stretch)	4.2% (with stretch)	Y	Y	4.30%	4.20%	4.00%	Y									
	Working age population qualified to at least Level 3 or higher (NI 164)						Y																							
	Progress 5000 workless individuals into sustainable employment																													
	16 - 18 year olds in jobs without training as a percentage of total cohort																													

CONSTITUTION OF THE WEST OF ENGLAND PARTNERSHIP

A. Purpose of the Partnership

- 1 Realise the potential of the West of England and improvements in its economy, public infrastructure, environment and quality of life for all its residents.
- 2 Set clear long term direction to support the development and delivery of key strategies for the West of England.
- 3 Promote the interests of the West of England regionally, nationally and in Europe.
- 4 Add to the confidence that attracts and retains public and private investment.
- 5 Work holistically involving local authorities, public agencies and social, economic and environmental partners.
- 6 Provide the leadership and strategic capacity to secure the well-being of the West of England.

B. Membership of the Partnership

- 7 Three elected members from each of the four unitary authorities in the West of England, namely:
 - Bath & North East Somerset Council
 - Bristol City Council
 - North Somerset Council
 - South Gloucestershire Council

The elected members are nominated by each authority, annually in May (or after local elections, if held at a different time).

- 8 Seven social, economic and environmental partners selected using the following criteria:
 - able to contribute to the key issues the Partnership will be addressing based on their skills and knowledge
 - able to make a top-rate personal contribution
 - drawn from across the West of England
 - achieving a balance of representation of partners across the partnership and its specialist groups
 - able to represent sector interests in the West of England.

These nominations may be reviewed annually by the Partnership to confirm or vary membership from May each year (or after local elections, if held at a different time).

- 9 Observers. One nominated annually in May by each of the following organisations:
 - Homes and Communities Agency
 - South West Regional Development Agency
 - South West Regional Assembly

- Government Office for the South West
- Gloucestershire County Council
- Somerset County Council
- Wiltshire County Council

C. Joint Committees, Boards and Specialist Groups in support of the Partnership

10 These are as follows:

- Joint Transport Committee
- Joint Waste Management Committee
- Joint Scrutiny Committee (made up of Scrutiny Committees from each authority)
- Planning, Housing and Communities Board
- Employment and Skills Board
- Culture, Leisure & Tourism
- Rural Strategy Group

11 The purpose and core membership of each Joint Committee, Board and Specialist Group is set out in the Schedule attached. The criteria at B 8 above will be used in selecting and reviewing the membership of social, economic and environmental partners.

12 Each Joint Committee, Board or Specialist Group will work with appropriate Social, Economic and Environmental Board members and partners, strategic partner organisations and expert witnesses to assist in achieving their objectives.

13 The Partnership may vary the number and roles of its Joint Committees, Boards and Specialist Groups.

D. West of England Initiative

14 Whilst not formally part of the Partnership, the West of England Initiative is part of a variety of arrangements the Partnership makes to engage and consult people in the West of England. It supports the Partnership by:

- debating significant current and future issues
- facilitating information sharing and networking
- advocating for the sub-region.

15 Established by GWE Business West, the Initiative comprises a wide range of business, public, private and voluntary and community organisations including members of the Partnership.

E. Convening and conducting meetings of the Partnership, its Joint Committees, Boards and Specialist Groups

16 Annually in May (or after local elections, if held at a different time) the Clerk to the Partnership shall publish the:

- diary of meetings and events for the forthcoming year, including venues
- membership of the Partnership, its Joint Committees, Boards and Specialist Groups
- name and contact details for the Clerks to the Partnership, its Joint Committees, Boards and Specialist Groups.

- 17 At the first meeting of the Partnership, its Joint Committees, Boards and Specialist Groups the appropriate Clerk shall:
- arrange for the election of a chair and vice chair for the year
 - publish the diary of meetings and membership.
- 18 All meetings of the Partnership, its Joint Committees, Boards and Specialist Groups shall (unless there exists a formal constitution and/or Joint Working Agreement(s) between the Authorities making alternative provisions, in which case the following are overridden):
- take place at least 4 times each year;
 - consider any items submitted to the Clerk of the appropriate meeting by a member of that meeting or an adviser, as long as they are received at least three working days prior to despatch of the agenda;
 - be convened by the appropriate Clerk five clear working days in advance by publishing an agenda, previous minutes and reports, unless the appropriate chair first approves the consideration of a paper(s) as urgent business. The agenda and reports shall be published on westofengland.org website;
 - be public meetings governed and administered in accordance with local authority provisions, including considering confidential matters in exempt session if required;
 - allow appropriate substitutes for members of the Partnership, Joint Committees, Boards and Specialist Groups where their names are notified to the appropriate Clerk prior to the meeting;
 - provide for the appropriate Clerk to take the minutes and publish and seek approval for them at the next meeting;
 - have a quorum for any meeting of 40% of the voting membership (the elected members and social, economic and environmental partners);
 - have a standing item on the agenda for the receipt of written or oral representations (each normally of no longer than 5 minutes) from the public; these may be taken at the outset or during of the meeting at the discretion of the Chair;
 - be advised by the officers employed to support the Partnership or by officers of the local authorities, as appropriate;
 - arrive at decisions and recommendations by a simple majority of the voting members present; the Chair shall have a casting vote.
- 19 All members of the Partnership, its Joint Committees, Boards and Specialist Groups shall:
- commit to working together with partners for the future well-being of the West of England;
 - declare any personal or prejudicial interest in any matter to be considered at a meeting; if a declaration is made they may be asked to withdraw from the meeting whilst the item is considered;
 - maintain confidentiality of Partnership business where that is expressly required;
 - ensure that appropriate communication, consultation and conventional decision-making takes place at an appropriate time within their own organisations to seek to ensure the Partnership has the necessary support and any formal approval for the action it proposes;
 - be asked to indicate if they wish to continue in membership should they be absent from 3 consecutive meetings.

F. Planning, supporting and financing the work of the Partnership

- 20 For each of the various activities one unitary authority takes the role of 'lead' authority and ensures legal, financial and other general specialist services to the Partnership.
- 21 The Partnership, including its Joint Committees, Boards and Specialist Groups, is advised and supported by its Chief Executive who leads a 'core' policy, support and research team. Officers of partner organisations complement this advice and support.
- 22 The 'core' team comprises officers employed by or seconded to the 'lead' unitary authority on behalf of the partnership.
- 23 The total costs of the 'core' team and the services provided by the 'lead' or other authority shall be recharged in equal parts to the four constituent unitary authorities by the Treasurer of the 'lead' authority.
- 24 Such charges are based on an annual service plan and budget considered and approved by the Partnership by 31 December each year, in advance of the forthcoming financial year.
- 25 Should the requirements of the Partnership for support change, reduce or be terminated the constituent unitary authorities will use their best endeavours to ensure that employment is found for all the staff affected.

G. Other provisions

- 26 This arrangement shall not constitute a partnership in law. Neither the West of England Partnership nor any of the Boards or Specialist Groups shall have the power to take decisions that bind the member authorities or any other participants; however, this is not the case where decisions are made by the Joint Committees. Decisions that require to be legally ratified by the member authorities or participants shall be referred back to them to be taken.
- 27 The four unitary authorities have concluded a formal legal agreement to ensure clarity about the role, responsibilities and rights of the 'lead' authority and arrangements to protect the interests of each unitary authority. The agreement deals with:
 - budgeting, incurring and meeting expenditure and audit arrangements;
 - the employment of staff;
 - property, including the current rights to use the premises at Wilder House, Bristol;
 - procurement and entering into contracts;
 - liabilities and insurance;
 - arrangements in the event of an authority wishing to withdraw from the Partnership or all authorities agreeing to terminate the Partnership;
 - Arbitration;
 - Force Majeure.

7 February 2005

SCHEDULE

West of England Partnership

PURPOSE AND CORE MEMBERSHIP OF JOINT COMMITTEES, BOARDS AND SPECIALIST GROUPS

1. NOMINATION AND APPOINTMENT OF MEMBERS TO JOINT COMMITTEES, BOARDS AND SPECIALIST GROUPS

- Elected members are nominated to Joint Committees, Boards and Specialist Groups by each authority, annually in May (or after local elections, if held at a different time).
- Each Joint Committee, Board or Specialist Group will work with appropriate Social, Economic and Environmental Board members and partners, strategic organisations and expert witnesses to assist in achieving their objectives.
- Nominations of social, economic and environmental partners may be reviewed annually by each Group, using the criteria at paragraph B8 above, to confirm or vary membership from May each year.
- Observers are nominated by the relevant organisations, annually in May each year.
- Nomination of members and partners who are also members of the South West Regional Assembly is welcomed.
- A Board or Specialist Group may add to its membership during the year, using the criteria at B8 above, where this assists with its responsibilities.

2. JOINT COMMITTEES

Joint Transport Committee

The purpose, membership and operation of the Joint Transport Committee are governed by the Constitution of the Joint Committee and the Joint Working Agreement between the four authorities. The constitution outlines the powers as follows:

- 1 To receive recommendations from each of the Authorities for local transport projects to be included within the Local Transport Improvement Programme, and to develop and determine the Local Transport Improvement Programme on the basis of such recommendations, and to revise that Local Transport Improvement Programme from time to time. For clarification it is stated that the Joint Transportation Executive Committee may not include a local transport project within the Local Transport Improvement Programme except on the recommendation of the Authority or the Authorities within whose area(s) the project lies.
- 2 To recommend to the Executives of each of the Authorities any changes to the Joint Local Transport Plan which are necessary to accommodate and support the Local Transport Improvement Programme, for recommendation by the Executive of each Authority to its Council for approval
- 3 To prepare draft joint bids for funding for recommendation to the Executives of each of the Authorities for approval and to accept any funding offers and conditions received as a consequence of such bids

- 4 To manage any funds and to allocate them from time to time to each of the Authorities to enable each Authority to implement specific local transport projects in accordance with the Local Transport Improvement Programme
- 5 To monitor the implementation of the Local Transport Improvement Programme and report regularly to the Authorities thereon
- 6 To make such returns and provide such information as may be required by the Department for Transport.

Membership comprises the four Executive Members, one nominated by each authority.

Joint Waste Management Committee

The purpose, membership and operation of the Joint Waste Management Committee are governed by the Constitution of the Joint Committee and Joint Working Agreements between the authorities. The Joint Working Agreements outline the objectives as follows:

- 1 Develop a sustained and co-ordinated programme to reduce the amount of waste generated and to increase the opportunities to re-use and re-cycle. (Phase 1 of the Joint Waste Management Strategy)
- 2 Procure short to medium term residual waste treatment capacity to reduce the amount of waste which each of the Authorities is consigning to landfill and thereby to reduce the cost to each of the Authorities of Landfill Tax and to avoid or to minimise the cost of Landfill Allowance Trading Scheme ("LATS") fines to each of the Authorities and/or of needing to acquire LATS permits between 2011 and 2015. (Phase 2)
- 3 Procure a Contractor who will construct, provide and operate facilities for the treatment (and, should the Authorities agree, the disposal) of residual waste for the Authorities. Bath and North East Somerset is not participating in this part of the Joint Waste Management Strategy. (Phase 3)
- 4 Agree that decisions on additional future long-term waste treatments (that is, beyond 2020) should be developed in due course when there is greater clarity on long-term waste tonnage predictions and to allow new and evolving technologies to be fully assessed. (Phase 4)

The Executive of each Authority delegates to the Joint Waste Management Committee the following powers:

"The executive functions and powers of that Authority as may be necessary, calculated to facilitate, incidental or conducive to the discharge of the functions of the Joint Waste Management Committee in respect of the Phase Two and Phase 3 (PFI Project) as detailed in, and subject to such limitations and conditions set out in, the Joint Waste Management Committee Constitution."

Membership comprises the four Executive Members, one nominated by each authority.

3. BOARDS

Planning, Housing and Communities Board

Terms of reference are as follows:

- 1 Advise and make recommendations to the Partnership Board and to Council Cabinets, working with the Joint Scrutiny Committee.
- 2 Oversee and collaborate on sub-regional planning issues and relations with the existing and future Regional Planning Body.
- 3 Collaborate in delivering the levels of growth proposed by the Regional Spatial Strategy to 2026 in ways that secure mixed and sustainable communities in both existing and new developments across the sub-region, and oversee relationships with the RDA, Homes & Communities Agency and HomesWest in dealing with these issues.
- 4 Support the delivery of the housing land allocations being set out by the local development frameworks and appropriate improvements to local employment, social and physical infrastructure that links development with infrastructure provision and sources of funding.
- 5 Sharing and implementing best practice in managing a balanced housing market, specifically by making recommendations on best use of stock and tackling homelessness.

Membership comprises Executive Members with responsibility for Planning and Executive Members with responsibility for Housing Management, one from each function from each authority, and observers from each of the following organisations:

- Homes and Communities Agency
- South West Regional Development Agency
- South West Regional Assembly
- Government Office for the South West.

Employment and Skills Board

The Board supports the development of the local economy by creating more effective infrastructure to address the two labour market challenges of worklessness and a competitive skills base. The Board:

- 1 Oversees and provides direction on the employment and skills agenda in the sub-region
- 2 Develops and maintains systems for joining-up employment and skills priorities, services and resources

To help more local people into sustainable employment, to support the success of local businesses and to build thriving communities.

Specifically the Board:

- 1 Provides strategic direction for the multi-agency project West at Work, which is focused on the employment and skills issues relating to major economic development sites in the area;
- 2 Provides the strategic direction and challenge needed to ensure effective collaboration;
- 3 Secures employer engagement on employment and skills priorities, services and resources to ensure that the Board's work is demand-led.

Membership comprises:

- Employers
- Learning and Skills Council
- South West Regional Development Agency
- GWE Business West
- City of Bristol College
- University of the West of England
- Connexions
- Job Centre Plus
- 4 Unitary Authorities in the West of England
- West of England Partnership Office
- A Director of Children and Young People's Services.

4. SPECIALIST GROUPS

Culture, Leisure & Tourism Rural Strategy

Purpose

(At * insert the name of the appropriate group)

- 1 Advise and act in support of the West of England Partnership and the local authorities on sub-regional (*) matters
- 2 Recommend joint action on these issues to the Partnership and secure the outcomes approved
- 3 Advocate responses on sub-regional (*) to influence regional and national policy and resource allocation
- 4 Work with the other specialist groups of the Partnership on issues of common interest
- 5 Initiate areas of co-operative working to further the interests of the West of England

Culture, Leisure & Tourism Group membership

- 1 Up to 2 Cabinet Members, including one with responsibility for culture and/or leisure and/or tourism, from each of the four unitary authorities.
- 2 Social, economic and environmental partners, currently one drawn from each of the following organisations:
 - Arts Council of England – South West
 - Culture South West
 - Museum, Libraries and Archives Council
 - Sport England
 - Screen West
 - South West Tourism
 - WESPORT

3 2 observers, one drawn from each of the following organisations:

- Government Office for the South West
- South West Regional Development Agency

Rural Strategy Group membership

1 1 elected member from each of the three authorities which include rural areas.

2 Social, economic and environmental partners, currently one drawn from each of the following organisations:

- Avon Local Councils Association
- Avon Wildlife Trust
- GWE Business West
- Community Action
- Forest of Avon
- National Union of Farmers

3 2 observers, one drawn from each of the following organisations:

- Government Office for the South West
- South West Regional Development Agency

5. JOINT SCRUTINY COMMITTEE

The terms of reference for the West of England Joint Scrutiny Committee are to:

- 1 scrutinise any relevant proposals from the West of England Partnership in relation to its activities (namely transport, planning, housing, waste management, skills & employment, economic development, culture and rural affairs);
- 2 scrutinise actions taken and decisions made by the Executive Committees and other Executive bodies of the Partnership;
- 3 make reports or recommendations to the Partnership's Executive Committees and other Executive bodies as appropriate and/or the component authorities' respective executives or overview and scrutiny committees.

The Joint Scrutiny Committee consists of 4 scrutiny committees, comprising 3 non-executive members, one from each authority, with responsibility for the overview and scrutiny for the functions and actions of the West of England Partnership. (Currently there is no provision for a statutory joint committee with these responsibilities.)