

# West of England Key Statistics

## April 2011

- [1. Population change](#)
- [2. Population projections](#)
- [3. Household projections](#)
- [4. Economic activity](#)
- [5. Unemployment](#)
- [6. Unemployed claimant count](#)
- [7. All Benefit claimants](#)
- [8. Employment levels by industry](#)
- [9. Employment levels by occupation](#)
- [10. Qualifications](#)
- [11. Earnings](#)
- [12. Key sectors](#)
- [13. Productivity](#)
- [14. Business Demography](#)
- [15. Number of VAT-registered businesses by age, turnover, and employment size](#)
- [16. House prices](#)
- [17. Dwelling completions](#)
- [18. Dwelling commitments](#)
- [19. Employment land commitments and allocations](#)
- [20. Employment land completions at April 2011](#)
- [21. Travel to work](#)

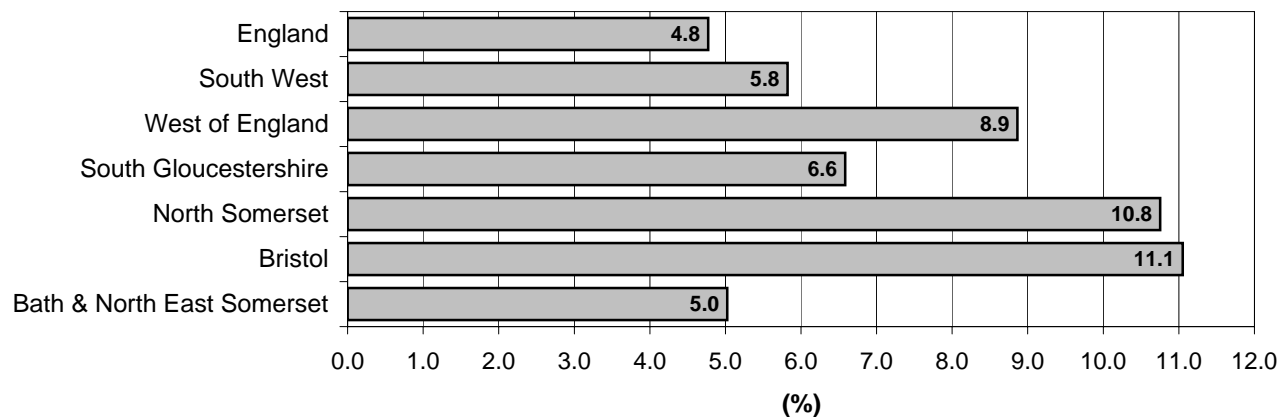
## 1. Population Change 1981 to 2009

	1981	1991	2001	2002	2003	2004	2005	2006	2007	2008	2009	2001-09	% change 2001-2009
<b>Bath &amp; North East</b>													
<b>Somerset</b>	161,500	163,100	169,200	170,100	171,000	171,600	172,600	173,100	175,500	177,400	177,700	8,500	5.0
<b>Bristol</b>	401,200	392,200	390,000	390,500	392,700	397,900	408,000	413,600	420,700	426,100	433,100	43,100	11.1
<b>North Somerset</b>	162,900	179,200	188,800	190,500	192,900	195,100	197,900	200,800	204,100	207,000	209,100	20,300	10.8
<b>South</b>													
<b>Gloucestershire</b>	203,100	222,200	246,000	248,300	250,200	253,000	255,400	257,500	259,400	260,400	262,200	16,200	6.6
<b>West of England</b>	<b>928,700</b>	<b>956,700</b>	<b>994,000</b>	<b>999,400</b>	<b>1,006,800</b>	<b>1,017,600</b>	<b>1,033,900</b>	<b>1,045,000</b>	<b>1,059,700</b>	<b>1,070,900</b>	<b>1,082,100</b>	<b>88,100</b>	<b>8.9</b>
<b>South West</b>	4,383,400	4,688,200	4,943,400	4,972,500	5,002,900	5,039,600	5,085,300	5,123,800	5,178,500	5,210,400	5,231,200	287,800	5.8
<b>England</b>	46,820,800	47,875,000	49,449,700	49,649,100	49,863,300	50,109,700	50,466,200	50,763,900	51,106,200	51,464,600	51,809,700	2,360,000	4.8

Source: National Statistics Mid Year Estimates (figures may not sum due to rounding) © Crown Copyright

Note: data for 2002-2009 reflect revisions undertaken by ONS in May 2010 due to improved migration statistics

**% Population Change 2001-2009**



## 2. Population Projections

### ONS Revised 2004-based Subnational population projections: West of England

#### West of England breakdown by age

AGE GROUP	2006	2011	2016	2021	2026	2006-2026	%
0-14	173,600	173,600	177,700	185,800	192,400	18,800	10.8
15-24	152,300	156,600	151,200	147,300	148,800	-3,500	-2.3
25-44	301,900	312,700	328,400	345,500	354,700	52,800	17.5
45-64	245,200	261,200	269,600	276,800	282,100	36,900	15.0
65-74	81,400	90,400	103,200	104,500	105,400	24,000	29.5
75+	81,600	84,900	90,900	102,800	119,000	37,400	45.8
<b>WoE Total</b>	<b>1,036,400</b>	<b>1,078,900</b>	<b>1,121,100</b>	<b>1,162,800</b>	<b>1,202,400</b>	<b>166,000</b>	<b>16.0</b>

	2006	2011	2016	2021	2026	2006-2026	%
<b>Bath and North</b>							
East Somerset	175,700	181,700	186,600	191,500	196,800	20,900	11.9
Bristol, City of	404,200	418,100	432,100	445,400	458,000	53,800	13.3
North Somerset	200,500	211,900	223,500	235,200	246,100	45,600	22.7
<b>South</b>							
Gloucestershire	255,800	267,200	278,900	290,700	301,500	45,700	17.9
<b>WoE</b>	<b>1,036,400</b>	<b>1,078,900</b>	<b>1,121,100</b>	<b>1,162,800</b>	<b>1,202,400</b>	<b>166,000</b>	<b>16.0</b>
South West	5,122,400	5,302,100	5,484,400	5,671,900	5,851,000	728,600	14.2
England	50,714,200	51,967,500	53,276,200	54,604,800	55,823,400	5,109,200	10.1

Source: Office for National Statistics (figures may not sum due to rounding) © Crown Copyright.

These projections, for areas in England, published on 27 September 2007 are based on the revised 2004 mid year population estimates

### ONS 2006-based Subnational population projections: West of England

#### West of England breakdown by age

AGE GROUP	2006	2011	2016	2021	2026	2006-2026	%
0-14	173,700	181,900	196,300	213,300	221,900	48,200	27.7
15-24	154,500	162,000	156,600	152,800	162,700	8,200	5.3
25-44	304,200	325,500	352,500	377,900	393,500	89,300	29.4
45-64	246,100	262,100	271,500	280,700	289,600	43,500	17.7
65-74	81,600	91,100	104,500	106,500	107,800	26,200	32.1
75+	82,200	85,700	92,900	107,200	125,800	43,600	53.0
<b>WoE Total</b>	<b>1,041,900</b>	<b>1,108,100</b>	<b>1,174,000</b>	<b>1,238,600</b>	<b>1,300,700</b>	<b>258,800</b>	<b>24.8</b>

#### All Ages

	2006	2011	2016	2021	2026	2006-2026	%
<b>Bath &amp; North East</b>							
Somerset	175,600	184,200	191,400	198,600	206,400	30,800	17.5
Bristol	410,500	440,700	469,400	495,600	519,800	109,300	26.6
North Somerset	201,400	216,800	233,200	250,100	266,400	65,000	32.3
<b>South</b>							
Gloucestershire	254,400	266,400	280,000	294,300	308,100	53,700	21.1
<b>West of England</b>	<b>1,041,900</b>	<b>1,108,100</b>	<b>1,174,000</b>	<b>1,238,600</b>	<b>1,300,700</b>	<b>258,800</b>	<b>24.8</b>
South West	5,124,100	5,368,400	5,620,400	5,881,700	6,138,900	1,014,800	19.8
England	50,762,900	52,706,400	54,724,200	56,757,000	58,682,400	7,919,500	15.6

Source: Office for National Statistics (figures may not sum due to rounding) © Crown Copyright.

These projections, for areas in England, published on 12 June 2008 are based on the 2006 mid-year population estimates

Note: The population projections are heavily influenced by the recent high levels of international migration.

There is uncertainty about whether or not this high inflow will continue and whether the 2006 based projections are a robust indication of future trends.

### 3. Sub Regional Household Projections, England

Note: Sub regional household projections are less robust than those at the regional level, particularly for those areas with relatively small numbers of households. This should be taken into account in using the figures (See footnotes).

#### Revised 2004 based

	2006	2011	2016	2021	2026	2006-26	%
<b>Bath &amp; North East Somerset</b>	74,000	79,000	83,000	87,000	91,000	17,000	23.0
<b>Bristol</b>	175,000	186,000	197,000	207,000	217,000	42,000	24.0
<b>North Somerset</b>	87,000	94,000	102,000	109,000	116,000	29,000	33.3
<b>South Gloucestershire</b>	106,000	114,000	123,000	131,000	138,000	32,000	30.2
<b>West of England</b>	<b>442,000</b>	<b>473,000</b>	<b>505,000</b>	<b>534,000</b>	<b>562,000</b>	<b>120,000</b>	<b>27.1</b>
<b>South West</b>	2,214,000	2,356,000	2,508,000	2,656,000	2,789,000	575,000	26.0
<b>England</b>	21,518,000	22,646,000	23,836,000	24,973,000	25,975,000	4,457,000	20.7

Source: Communities and Local Government, 2007

Notes

Sub regional household projections are less robust than those at the regional level, particularly for those areas with relatively small numbers of households. This should be taken into account in using the figures.

The sub regional household projections are not 'National Statistics.

The household projections are an indication of the likely increase in households given the continuation of recent demographic trends.

The household projections are not an assessment of housing need. They also do not take account of future policies.

#### 2006 based

	2006	2011	2016	2021	2026	2006-26	%
<b>Bath &amp; North East Somerset</b>	74,000	79,000	84,000	89,000	93,000	19,000	25.7
<b>Bristol</b>	178,000	194,000	211,000	227,000	241,000	63,000	35.4
<b>North Somerset</b>	87,000	95,000	104,000	114,000	123,000	36,000	41.4
<b>South Gloucestershire</b>	105,000	113,000	121,000	130,000	138,000	33,000	31.4
<b>West of England</b>	<b>444,000</b>	<b>481,000</b>	<b>520,000</b>	<b>560,000</b>	<b>595,000</b>	<b>151,000</b>	<b>34.0</b>
<b>South West</b>	2,211,000	2,361,000	2,529,000	2,697,000	2,854,000	643,000	29.1
<b>England</b>	21,515,000	22,748,000	24,107,000	25,439,000	26,674,000	5,159,000	24.0

Source: Communities and Local Government, 2008

Notes:

1. Estimates to 2006 are based on ONS mid-year population estimates.

Population Projections, and are not an assessment of housing need or do not take account of future policies. They are an indication of the likely increase in households given the continuation of recent demographic trends.

3. Sub regional household projections are less robust than those at the regional level, particularly for those areas with relatively small numbers of households. This should be taken into account in using the figures. Due to rounding, districts may not sum to regional totals.

4. The sub regional household projections are not 'National Statistics.

#### 2008 based

	2006	2011	2016	2021	2026	2006-26	%
<b>Bath &amp; North East Somerset</b>	72,000	76,000	80,000	84,000	88,000	16,000	22.2
<b>Bristol</b>	177,000	195,000	215,000	233,000	249,000	72,000	40.7
<b>North Somerset</b>	86,000	94,000	104,000	113,000	122,000	36,000	41.9
<b>South Gloucestershire</b>	105,000	111,000	120,000	129,000	137,000	32,000	30.5
<b>West of England</b>	<b>440,000</b>	<b>477,000</b>	<b>519,000</b>	<b>559,000</b>	<b>596,000</b>	<b>155,000</b>	<b>35.2</b>
<b>South West</b>	2,193,000	2,319,000	2,460,000	2,605,000	2,743,000	549,000	25.0
<b>England</b>	21,344,000	22,389,000	23,608,000	24,843,000	26,016,000	4,671,000	21.9

Source: Communities and Local Government, 2010

Notes:

1. Estimates to 2008 are based on ONS mid-year population estimates.

Population Projections, and are not an assessment of housing need or do not take account of future policies. They are an indication of the likely increase in households given the continuation of recent demographic trends.

3. Sub regional household projections are less robust than those at the regional level, particularly for those areas with relatively small numbers of households. This should be taken into account in using the figures. Due to rounding, districts may not sum to regional totals.

4. The sub regional household projections are not 'National Statistics.

#### 4. Economic Activity: Resident Population aged 16-64: Oct 2009 - Sept 2010

	Resident population 16-64		Economically active		In employment		In employment, working full-time		In employment, working part-time		Economically Inactive		Unemployed*	
	number	number	%	number	%	number	%	number	%	number	%	number	%	
<b>Bath &amp; North East Somerset</b>	120,800	93,500	77.4	89,000	73.7	62,100	69.7	26,800	30.1	27,400	22.6	5,200	5.3	
<b>Bristol</b>	298,300	235,600	79.0	220,700	74.0	157,200	71.3	63,400	28.7	62,700	21.0	17,300	7.2	
<b>North Somerset</b>	128,900	106,000	82.2	99,500	77.2	70,900	71.3	28,600	28.7	22,900	17.8	6,200	5.7	
<b>South Gloucestershire</b>	166,800	137,600	82.5	131,900	79.1	94,100	71.3	37,600	28.5	29,200	17.5	7,100	5.0	
<b>West of England</b>	<b>714,800</b>	<b>572,700</b>	<b>80.1</b>	<b>541,100</b>	<b>75.7</b>	<b>384,200</b>	<b>71.0</b>	<b>156,400</b>	<b>28.9</b>	<b>142,100</b>	<b>19.9</b>	<b>35,800</b>	<b>5.0</b>	
<b>South West</b>	3,278,000	2,577,500	78.6	2,419,600	73.8	1,719,100	71.0	697,000	28.8	700,500	21.4	157,900	6.1	
<b>England &amp; Wales</b>	35,407,400	27,013,100	76.3	24,901,800	70.3	18,443,000	74.1	6,413,000	25.8	8,394,300	23.7	2,111,300	7.8	

Notes: data has been reweighted in line with the latest ONS estimates.

Economically active includes all those persons aged 16-64 who are employed or looking to be employed.

Employment rate is proportion of those persons aged 16-64 who are in employment.

Source ONS, Annual Population Survey © Crown Copyright.

\* West of England, SW and National data are direct APS results. Unemployment figures for UA's are taken from ONS model-based estimates which provide a more precise measure.

## 5. Unemployment Rate: Resident Population 16+: Annual Time Series

	Mar 2001 - Feb 2002		Mar 2002 - Feb 2003		Mar 2003 - Feb 2004		Apr 2004-Mar 2005**		Apr 2005-Mar 2006**		Apr 2006-Mar 2007**		Apr 2007-Mar 2008**		Apr 2008-Mar 2009**		Apr 2009-Mar 2010**	
	number	%	number	%	number	%	Number	%	Number	%	Number	%	Number	%	Number	%	Number	%
<b>Bath and North East Somerset</b>	2,900	3.3	2,800	3.1	2,800	3.2	3,000	3.4	2,200	2.5	3,700	4.1	3,300	3.5	3,800	4.0	5,800	5.9
<b>Bristol</b>	9,300	4.6	9,200	4.5	8,700	4.3	10,800	5.2	9,900	4.5	9,300	4.2	10,100	4.5	9,500	4.2	18,500	7.9
<b>North Somerset</b>	3,000	3.2	2,800	2.9	2,800	3.0	3,000	3.1	2,000	2.0	1,600	1.6	2,700	2.5	3,600	3.4	7,400	6.9
<b>South Gloucestershire</b>	3,600	2.7	3,900	2.9	3,500	2.7	4,000	2.9	4,500	3.2	4,300	3.1	3,900	2.7	4,500	3.1	7,800	5.6
<b>West of England</b>	<b>18,800</b>	<b>3.5</b>	<b>18,700</b>	<b>3.5</b>	<b>17,800</b>	<b>3.3</b>	<b>20,900</b>	<b>3.9</b>	<b>18,700</b>	<b>3.4</b>	<b>19,000</b>	<b>3.4</b>	<b>20,000</b>	<b>3.5</b>	<b>21,400</b>	<b>3.7</b>	<b>39,500</b>	<b>6.8</b>
<b>South West*</b>	88,000	3.6	95,000	3.8	82,000	3.3	88,500	3.5	86,500	3.4	102,200	3.9	100,000	3.8	122,600	4.6	168,400	6.3
<b>England and Wales*</b>	1,257,000	4.9	1,308,000	5.0	1,264,000	4.8	1,240,200	4.7	1,348,600	5.0	1,452,700	5.4	1,435,000	5.2	1,736,900	6.3	2,197,300	7.9

\* West of England, SW and National data are direct APS results, UA figures are model-based. Therefore the West of England is not constrained to the constituent authorities that make up the sub-region.

\*\* APS results. Figures prior to Jan 2004 are taken from the LFS.

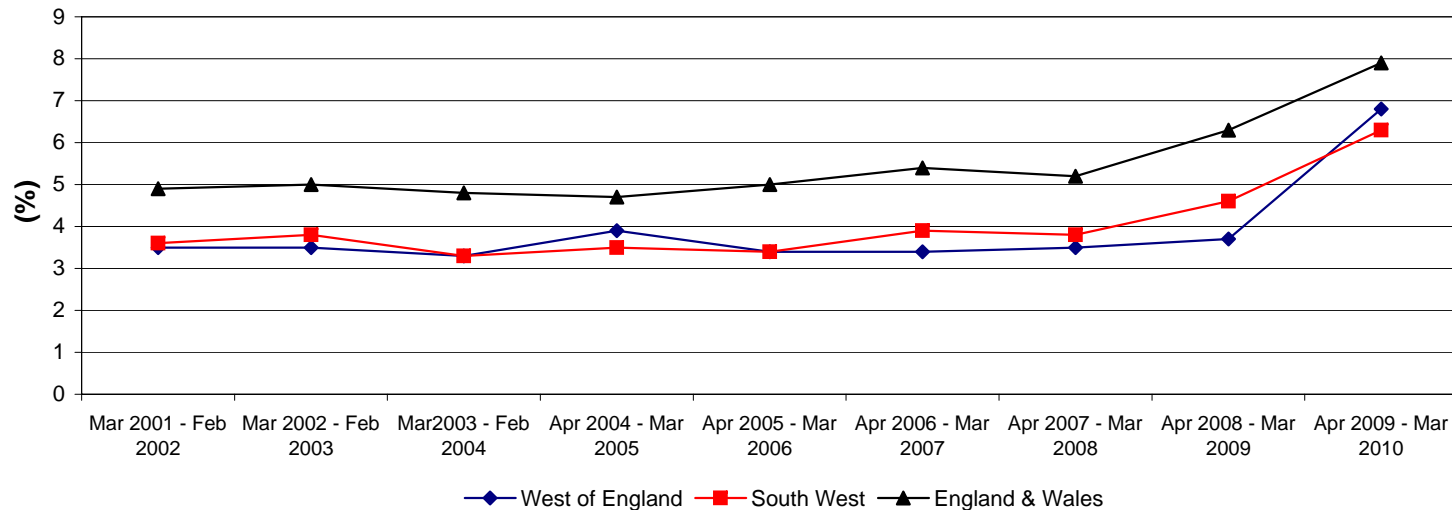
Notes:

1. The data above is based on the ILO measure of unemployment and as such differs from the number of unemployed claimants. The ILO measure is now the official, and only internationally comparable, measure of UK unemployment.
2. The unemployment rate is calculated by dividing the number unemployed by the number of economically active residents of working age.
3. This data is based on a sample survey and so subject to sampling variability.

Source: Office for National Statistics Local Area Labour Force data and Annual Population Survey data (\*) © Crown Copyright.

### Unemployment Rate: Time Series 2001 - 2010

Source: National Statistics



## 6. Unemployed Claimant Count

### Monthly time-series

	April 2010		May 2010		June 2010		July 2010		August 2010		September 2010		October 2010		November 2010		December 2010		January 2011		February 2011		March 2011	
	number	rate	number	rate	number	rate	number	rate	number	rate	number	rate	number	rate	number	rate	number	rate	number	rate	number	rate	number	rate
<b>Bath and North East Somerset</b>	2,369	2.0	2,238	1.9	2,148	1.8	2,122	1.8	2,086	1.8	2,129	1.8	2,065	1.8	2,038	1.7	2,041	1.7	2,142	1.8	2,284	2.0	2,262	1.9
<b>Bristol</b>	11,031	3.6	10,672	3.5	10,247	3.3	10,164	3.3	10,267	3.4	10,420	3.4	10,502	3.4	10,406	3.4	10,215	3.3	10,815	3.5	11,375	3.7	11,561	3.8
<b>North Somerset</b>	3,053	2.4	2,881	2.2	2,721	2.1	2,618	2.0	2,666	2.1	2,626	2.0	2,547	2.0	2,529	2.0	2,613	2.0	2,756	2.1	2,887	2.2	2,941	2.3
<b>South Gloucestershire</b>	3,526	2.1	3,351	2.0	3,106	1.8	3,053	1.8	3,024	1.8	3,120	1.8	3,107	1.8	3,016	1.8	2,996	1.8	3,271	1.9	3,460	2.0	3,487	2.0
<b>West of England</b>	<b>19,979</b>	<b>2.8</b>	<b>19,142</b>	<b>2.6</b>	<b>18,222</b>	<b>2.5</b>	<b>17,957</b>	<b>2.5</b>	<b>18,043</b>	<b>2.5</b>	<b>18,295</b>	<b>2.5</b>	<b>18,221</b>	<b>2.5</b>	<b>17,989</b>	<b>2.5</b>	<b>17,865</b>	<b>2.5</b>	<b>18,984</b>	<b>2.6</b>	<b>20,006</b>	<b>2.8</b>	<b>20,251</b>	<b>2.8</b>
<b>South West</b>	89,074	2.7	83,751	2.5	79,311	2.4	78,069	2.4	78,546	2.4	78,148	2.4	77,362	2.3	78,516	2.4	79,427	2.4	85,507	2.6	88,974	2.7	87,673	2.7
<b>England &amp; Wales</b>	1,372,068	3.9	1,311,494	3.7	1,255,308	3.5	1,246,882	3.5	1,258,420	3.5	1,251,142	3.5	1,229,975	3.5	1,225,168	3.4	1,232,110	3.5	1,299,218	3.7	1,329,709	3.7	1,321,404	3.7

Source: Claimant count rates and proportions ONS Crown Copyright.

Notes:

1. Rates for 2010 onwards are calculated using the mid-2009 resident population aged 16-64. JSA claimant count records the number of people claiming Jobseekers Allowance (JSA) and National Insurance credits at Jobcentre Plus local offices.
2. Residence-based proportions express the number of claimants resident in an area as a percentage of the population aged 16-64 resident in that area.
3. This is not an official measure of unemployment, but is the only up to date indicative statistic available for areas smaller than Local Authorities.
4. The population figures used to calculate proportions have been changed from working age (16-59f/64m) to aged 16-64 for both males and females. This change affects proportions for all dates, so all proportions for all dates will differ to those downloaded previously. Figures for the population aged 16-64 are sourced from the mid-year population estimates.

### Annual time-series

	March 2000		March 2001		March 2002		March 2003		March 2004		March 2005		March 2006		March 2007		March 2008		March 2009		March 2010		March 2011	
	number	rate	number	rate	number	rate	number	rate	number	rate	number	rate	number	rate	number	rate	number	rate	number	rate	number	rate	number	rate
<b>Bath &amp; North East Somerset</b>	1,690	1.6	1,230	1.1	1,240	1.1	1,301	1.2	1,172	1.1	974	0.9	1,236	1.1	1,184	1.0	997	0.9	2,310	2.0	2,495	2.1	2,262	1.9
<b>Bristol</b>	8,250	3.2	7,096	2.7	6,480	2.5	6,212	2.3	5,927	2.2	5,736	2.0	6,271	2.2	6,568	2.2	5,116	1.7	10,680	3.5	11,182	3.7	11,561	3.8
<b>North Somerset</b>	1,877	1.6	1,451	1.2	1,443	1.2	1,473	1.2	1,374	1.1	1,187	1.0	1,376	1.1	1,419	1.1	1,194	0.9	3,102	2.4	3,237	2.5	2,941	2.3
<b>South Gloucestershire</b>	1,866	1.2	1,680	1.1	1,615	1.0	1,729	1.1	1,551	0.9	1,379	0.8	1,691	1.0	1,677	1.0	1,236	0.7	3,736	2.2	3,525	2.1	3,487	2.0
<b>West of England</b>	<b>13,683</b>	<b>2.1</b>	<b>11,457</b>	<b>1.8</b>	<b>10,778</b>	<b>1.7</b>	<b>10,715</b>	<b>1.6</b>	<b>10,024</b>	<b>1.5</b>	<b>9,276</b>	<b>1.4</b>	<b>10,574</b>	<b>1.5</b>	<b>10,848</b>	<b>1.5</b>	<b>8,543</b>	<b>1.2</b>	<b>19,828</b>	<b>2.7</b>	<b>20,439</b>	<b>2.8</b>	<b>20,251</b>	<b>2.8</b>
<b>South West</b>	70,639	2.3	57,980	1.9	55,100	1.8	53,229	1.7	47,913	1.5	45,225	1.4	50,140	1.5	50,224	1.5	41,412	1.3	96,045	2.9	94,277	2.9	87,673	2.7
<b>England &amp; Wales</b>	1,020,578	3.1	885,130	2.6	850,446	2.5	850,472	2.5	796,091	2.3	759,565	2.2	865,126	2.5	842,697	2.4	743,046	2.1	1,351,744	3.8	1,413,751	4.0	1,321,404	3.7

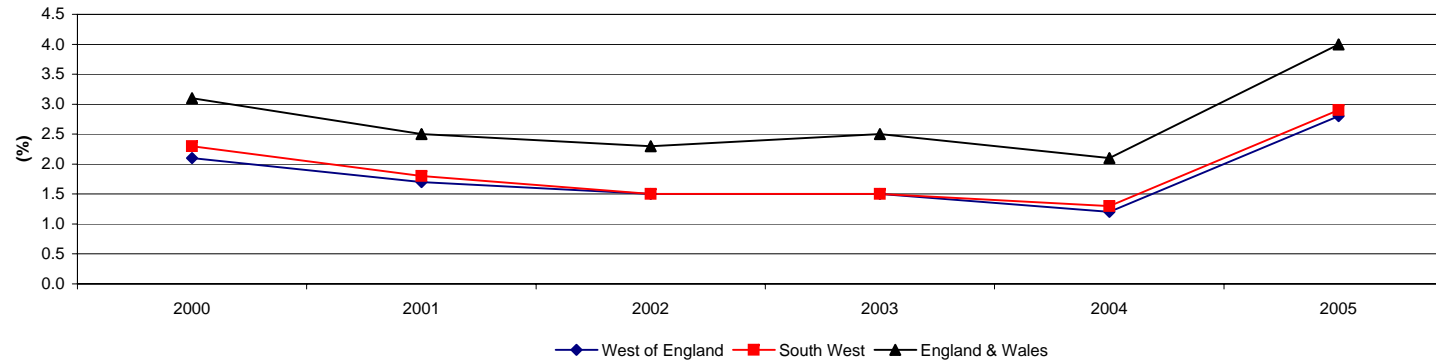
Source: Claimant count rates and proportions ONS Crown Copyright.

Notes:

1. Proportion for dates from 2008 onwards are calculated using the mid-2007 resident population aged 16-64. Proportion for dates from 2009 onwards are calculated using the mid-2008 resident population aged 16-64. Proportion for dates from 2010 onwards are calculated using the mid-2009 resident population aged 16-64. JSA claimant count records the number of people claiming Jobseekers Allowance (JSA) and National Insurance credits at Jobcentre Plus local offices.
2. Residence-based proportions express the number of claimants resident in an area as a percentage of the population aged 16-64 resident in that area.
3. This is not an official measure of unemployment, but is the only up to date indicative statistic available for areas smaller than Local Authorities.
4. The population figures used to calculate proportions have been changed from working age (16-59f/64m) to aged 16-64 for both males and females. This change affects proportions for all dates, so all proportions for all dates will differ to those downloaded previously. Figures for the population aged 16-64 are sourced from the mid-year population estimates.

## Unemployed Claimant Count: Annual Time Series 1999-2010

Source: National Statistics



Source: Claimant count rates and proportions ONS Crown Copyright.

## 7. All Benefit Claimants, working age: May 2010

	Any benefits		Carers allowance (CA) only		Disability living allowance (DLA) only		Incapacity benefit (IB) or ESA only		income support (IS)/pension credit (PC) only		job seekers allowance (JSA) only	
	number	% of 16-64 year olds	number	% of 16-64 year olds	number	% of 16-64 year olds	number	% of 16-64 year olds	number	% of 16-64 year olds	number	% of 16-64 year olds
Bath & North East Somerset	10,690	9.2	590	0.5	960	0.8	1,570	1.3	1,310	1.1	1,980	1.7
Bristol	44,560	14.5	1,780	0.6	2,760	0.9	6,510	2.1	6,240	2.0	9,990	3.3
North Somerset	15,460	12.0	830	0.6	1,120	0.9	2,780	2.1	1,930	1.5	2,580	2.0
South Gloucestershire	15,170	8.9	1,020	0.6	1,490	0.9	2,380	1.4	1,970	1.2	2,930	1.7
<b>West of England</b>	<b>85,880</b>	<b>11.9</b>	<b>4,210</b>	<b>0.6</b>	<b>6,340</b>	<b>0.9</b>	<b>13,240</b>	<b>1.8</b>	<b>11,440</b>	<b>1.6</b>	<b>17,490</b>	<b>2.4</b>
<b>South West</b>	<b>399,580</b>	<b>12.1</b>	<b>24,210</b>	<b>0.7</b>	<b>33,100</b>	<b>1.0</b>	<b>60,050</b>	<b>1.8</b>	<b>49,780</b>	<b>1.5</b>	<b>74,100</b>	<b>2.2</b>
<b>England &amp; Wales</b>	<b>5,161,000</b>	<b>14.5</b>	<b>280,630</b>	<b>0.8</b>	<b>354,530</b>	<b>1.0</b>	<b>740,830</b>	<b>2.1</b>	<b>688,480</b>	<b>1.9</b>	<b>1,190,270</b>	<b>3.3</b>

Source: DWP Benefits data. Nomis Crown Copyright.

Notes:

This dataset is based on 100% of claims so is not subject to any sampling error. In outputs figures are rounded to the nearest 10, and those below 5 are suppressed as statistically unreliable (shown as -)

1. Carer's Allowance (CA) is paid to carers who look after a severely disabled person for at least 35 hours a week. The severely disabled person must be getting either higher or middle rate DLA care component or AA or maximum rate Constant Attendance Allowance with their War Pension or Industrial Injuries Disablement Benefit.
2. Disability Living Allowance (DLA) is paid to people who have become disabled before the age of 65 and who need assistance with personal care and/or mobility.
3. Incapacity Benefit (IB) is paid to people who have been incapable of work because of sickness or disability for at least four days in a row and who have paid sufficient contributions throughout their working lives.
4. Income Support (IS) is available to those under 60 who have a low income. Pension Credit is an income-related benefit which helps provide a minimum guaranteed income for those aged 60 and over living in Great Britain.
5. Jobseeker's Allowance is a benefit payable to unemployed people. In general, to be entitled to Jobseeker's Allowance, a person must be available for work for at least 40 hours a week, be actively seeking work, and have entered into a Jobseeker's Agreement.

Percentages of population receiving state benefits have been calculated using populations aged 16-64 for both men and women. The age at which women reach State Pension age is gradually increasing from 60 to 65 between April 2010 and April 2020. Hence, until April 2020, some women included in the population figure are not eligible to be part of the count of working age benefit claimants. There will be some time series discontinuity over this period, with trends partly reflecting the changing eligibility criteria.

Rates from 2010 onwards are calculated using the mid-2009 resident population aged 16-64



## 8. Employment levels by industry (SIC 2007)

Annual Population survey, workplace based, Oct 2009 - Sep 2010

% of all in Employment by industry

	Bath & North East		Bristol		North Somerset		South Gloucestershire		West of England		South West		England & Wales	
	number	%	number	%	number	%	number	%	number	%	number	%	number	%
A: agriculture and fishing	~	0.5	!	!	800	0.8	~	0.4	<b>2,100</b>	<b>0.4</b>	53,500	2.1	272,700	1.1
B,D,E: energy and water	1,300	1.4	1,800	0.8	2,200	2.1	2,100	1.5	<b>7,400</b>	<b>1.3</b>	39,900	1.6	375,600	1.5
C: manufacturing	8,000	8.7	20,500	9.2	9,700	9.4	16,100	12.0	<b>54,300</b>	<b>9.8</b>	263,500	10.5	2,532,900	9.9
F: Construction	7,500	8.1	10,100	4.5	8,700	8.4	11,000	8.2	<b>37,300</b>	<b>6.7</b>	193,800	7.7	1,969,500	7.7
G,I: distribution, hotels and restaurants	17,600	19.0	37,400	16.7	20,000	19.3	23,400	17.4	<b>98,400</b>	<b>17.7</b>	478,100	19.0	4,736,600	18.5
H,J: transport and communications	8,500	9.2	26,000	11.6	8,700	8.4	13,100	9.8	<b>56,300</b>	<b>10.2</b>	192,500	7.6	2,215,300	8.6
K-N: banking, finance and insurance	12,900	13.9	42,500	18.9	19,400	18.8	22,300	16.6	<b>97,200</b>	<b>17.5</b>	357,800	14.2	4,184,700	16.3
O-Q: public admin. education and health	30,700	33.1	72,000	32.1	27,700	26.8	39,000	29.1	<b>169,500</b>	<b>30.6</b>	780,800	31.0	7,748,700	30.3
R-U: other services	5,100	5.5	11,900	5.3	5,800	5.7	6,400	4.8	<b>29,200</b>	<b>5.3</b>	145,600	5.8	1,433,500	5.6
G-Q: total services	74,900	80.7	189,800	84.6	81,600	79.0	104,300	77.7	<b>450,600</b>	<b>81.2</b>	1,954,900	77.6	20,318,900	79.3

Source: Annual Population Survey, workplace-based statistics. ONS

Notes: this data has been reweighted in line with the latest ONS estimates.

Figures may not sum due to rounding

### Employment Levels by Industry: % of total jobs by industry

Source: Annual Population Survey, Workplace-based, Oct 2009 - Sep 2010



## 2001 Population Census: Employment by Industry and Workplace: Workplace data

	B&NES		Bristol		N. Somerset		S.Gloucestershire		W of E		South West		England and Wales	
	number	%	number	%	number	%	number	%	number	%	number	%	number	%
A, B. Agriculture, hunting, forestry & fishing	1,050	1.3	598	0.3	1,461	2.0	1,362	1.1	<b>4,471</b>	0.9	57,552	2.6	359,746	1.5
C, D, E. Mining & quarrying, manufacturing, & electricity, gas & water supply	10,418	12.9	21,384	9.9	10,133	14.0	22,601	17.6	<b>64,536</b>	13.0	327,866	14.6	3,744,896	15.9
F. Construction	5,280	6.6	13,598	6.3	5,164	7.1	9,688	7.6	<b>33,730</b>	6.8	163,791	7.3	1,593,338	6.8
G. Wholesale & retail trade, repairs	12,947	16.1	34,200	15.9	14,226	19.6	21,892	17.1	<b>83,265</b>	16.8	388,656	17.3	3,968,475	16.9
H. Hotels & restaurants	4,791	6.0	8,511	4.0	3,898	5.4	4,301	3.4	<b>21,501</b>	4.3	127,916	5.7	1,121,295	4.8
I. Transport, storage & communications	3,404	4.2	14,730	6.8	5,387	7.4	11,470	9.0	<b>34,991</b>	7.0	135,777	6.1	1,641,285	7.0
J. Financial intermediation	2,107	2.6	20,148	9.4	2,622	3.6	6,999	5.5	<b>31,876</b>	6.4	96,710	4.3	1,112,778	4.7
K. Real estate, renting & business activities	11,129	13.8	35,749	16.6	8,504	11.7	17,133	13.4	<b>72,515</b>	14.6	253,950	11.3	3,051,886	13.0
L. Public administration & defence, social security	6,617	8.2	12,047	5.6	3,014	4.2	9,421	7.4	<b>31,099</b>	6.3	159,077	7.1	1,338,321	5.7
M. Education	8,244	10.2	16,805	7.8	5,520	7.6	8,763	6.8	<b>39,332</b>	7.9	170,500	7.6	1,827,842	7.8
N. Health & social work	10,384	12.9	25,908	12.0	8,900	12.3	10,088	7.9	<b>55,280</b>	11.1	251,492	11.2	2,550,779	10.8
O, P, Q. Other	4,141	5.1	11,742	5.5	3,691	5.1	4,381	3.4	<b>23,955</b>	4.8	109,738	4.9	1,218,410	5.2
Not currently in employment	-	-	-	-	-	-	-	-	-	-	-	-	-	-
Total	80,512	-	215,420	-	72,520	-	128,099	-	496,551	-	2,256,819	-	23,529,051	-

## 1991 Population Census: Employment By Industry and Workplace: Special Statistics

	B&NES		Bristol		N. Somerset		S.Gloucestershire		W of E		South West		England and Wales	
	Number	%	Number	%	Number	%	Number	%	Number	%	Number	%	Number	%
SIC 0 Agriculture, Forestry and Fishing	1,080	1.5	330	0.2	1,800	3.1	1,650	1.8	<b>4,860</b>	1.1	68,020	3.4	396,200	1.9
SIC 1 Energy and Water Supply Industries	1,800	2.5	3,340	1.6	690	1.2	1,550	1.7	<b>7,380</b>	1.7	29,630	1.5	384,510	1.8
SIC 2 Extraction of Minerals and Ores other than Fuels; Manuf of Metals, Mineral Products & Chemicals	720	1.0	2,720	1.3	960	1.6	1,400	1.5	<b>5,800</b>	1.3	36,640	1.8	613,900	2.9
SIC 3 Metal goods, Engineering & Vehicles Industries	2,570	3.6	11,150	5.3	4,280	7.3	21,850	23.5	<b>39,850</b>	9.2	177,340	8.9	1,993,980	9.3
SIC 4 Other Manufacturing Industries	8,530	11.9	14,100	6.7	4,480	7.7	6,180	6.6	<b>33,290</b>	7.7	152,210	7.7	1,840,870	8.6
Persons : Employees : SIC 5 Construction	4,990	6.9	13,640	6.5	4,790	8.2	8,060	8.7	<b>31,480</b>	7.3	155,330	7.8	1,561,650	7.3
SIC 6 Distribution, Hotels and Catering; Repairs	15,300	21.3	40,920	19.6	13,940	23.9	18,690	20.1	<b>88,850</b>	20.5	437,090	22.0	4,417,080	20.7
SIC 7 Transport and Communication	3,350	4.7	16,430	7.9	3,200	5.5	4,650	5.0	<b>27,630</b>	6.4	104,760	5.3	1,365,990	6.4
SIC 8 Banking, Finance, Insurance, Business Services & Leasing	7,900	11.0	45,330	21.7	5,730	9.8	9,070	9.7	<b>68,030</b>	15.7	228,250	11.5	2,623,890	12.3
SIC 9 Other Services	25,090	34.9	59,920	28.6	18,080	31.0	19,520	21.0	<b>122,610</b>	28.4	584,120	29.4	6,002,970	28.1
SIC Industry not stated or not adequately described	510	0.7	1,280	0.6	400	0.7	510	0.5	<b>2,700</b>	0.6	15,790	0.8	161,760	0.8
All persons (Employees and Self Employed)	71,840	-	209,160	-	58,350	-	93,130	-	<b>432,480</b>	-	1,989,180	-	21,362,800	-

## 9. Employment levels by occupation

Annual Population survey, workplace based, Oct 2009 - Sep 2010

% of all in Employment by occupation

	Bath and North East Somerset		Bristol		North Somerset		South Gloucestershire		West of England		South West		England & Wales	
	No	%	No	%	No	%	No	%	No	%	No	%	No	%
1: managers & senior officials	17,300	18.6	27,400	12.2	20,800	20.2	21,800	16.2	<b>87,300</b>	<b>15.7</b>	399,000	15.8	4,084,000	15.9
2: professional occupations	15,500	16.8	40,000	17.8	12,100	11.7	17,500	13.0	<b>85,100</b>	<b>15.3</b>	331,500	13.2	3,573,200	14.0
3: associate prof & tech occupations	12,300	13.3	40,800	18.2	16,700	16.2	19,700	14.7	<b>89,600</b>	<b>16.2</b>	371,000	14.7	3,757,700	14.7
4: administrative & secretarial occupations	9,300	10.0	22,100	9.8	10,600	10.3	16,100	12.0	<b>58,000</b>	<b>10.5</b>	265,900	10.6	2,803,700	10.9
5: skilled trades occupations	9,100	9.8	17,600	7.9	9,600	9.3	15,100	11.3	<b>51,400</b>	<b>9.3</b>	310,000	12.3	2,625,400	10.2
6: personal service occupations	6,500	7.1	18,300	8.2	9,100	8.8	9,300	6.9	<b>43,200</b>	<b>7.8</b>	223,900	8.9	2,255,900	8.8
7: sales & customer service occupations	7,500	8.1	17,700	7.9	7,900	7.6	10,700	8.0	<b>43,800</b>	<b>7.9</b>	172,100	6.8	1,884,700	7.4
8: process, plant & machine operatives	5,200	5.6	15,100	6.7	5,600	5.4	7,900	5.9	<b>33,800</b>	<b>6.1</b>	156,300	6.2	1,690,500	6.6
9: elementary occupations	9,700	10.4	24,300	10.8	10,600	10.2	15,700	11.7	<b>60,300</b>	<b>10.9</b>	279,300	11.1	2,828,200	11.0

Source: Annual Population Survey, workplace-based statistics. ONS

Notes: this data has been reweighted in line with the latest ONS estimates.

Figures may not sum due to rounding

## 10. Qualifications

End of Key Stage 4<sup>1</sup> pupils achieving at GCSE and equivalents: 5+ A\*-C grades inc. English & mathematics

	2004/5		2005/6		2006/7		2007/8		2008/9		2009/10 <sup>2,3</sup>	
	#	%	#	%	#	%	#	%	#	%	#	%
B&NES	1,105	50	1,167	52	1,108	51	1,247	57	1,301	60	1,383	61
Bristol	935	28	944	30	977	32	1,104	36	1,259	40	1,389	46
N.Somerset	1,082	47	1,085	47	1,129	49	1,177	51	1,178	52	1,276	56
South Glos.	1,360	44	1,368	44	1,428	45	1,524	48	1,529	49	1,786	56
<b>West of England<sup>4</sup></b>	<b>4,482</b>	<b>41</b>	<b>4,563</b>	<b>43</b>	<b>4,642</b>	<b>43</b>	<b>5,052</b>	<b>47</b>	<b>5,266</b>	<b>49</b>	<b>5,834</b>	<b>54</b>
South West	26,222	46	26,848	46	27,361	47	28,338	49	29,322	52	31,338	55
England <sup>5</sup>	284,403	45	295,836	46	303,157	47	310,849	48	315,984	50	317,323	55

Source: DCSF, GCSE and equivalent results

Notes:

1. Aged 15 at the start of the academic year, ie. 31 August

2. Provisional data

3. In 2010 iGCSEs, accredited at time of publication, have been counted as GCSE equivalents and also as English & mathematics GCSEs.

4. West of England figures calculated by WEPO

5. England averages include all schools.

Local Authority, Government Office Region and Total (Maintained sector) figures are adjusted for pupils recently arrived from overseas. Please see the Notes to Editors for more details.

Includes City Technology Colleges and Academies but excludes hospital schools and pupil referral units.

Including attempts and achievements by these pupils in previous academic years.

Average capped point scores are calculated using the best 8 GCSEs or equivalent results.

## Qualifications of resident population aged 16-64: January 2009-December 2009

	B&NES		Bristol		N.Som		S.Glos		WoE*		SW		England & Wales	
	%	#	%	#	%	#	%	#	%	#	%	#	%	#
<b>% with NVQ4+ - aged 16-64</b>	35.3	42,500	35.1	103,900	30.2	38,800	27.1	44,800	32.4	230,000	29.1	950,900	29.5	10,399,200
<b>% with NVQ3 only - aged 16-64</b>	17.1	20,600	15.2	45,000	18.0	23,200	17.0	28,100	16.4	116,900	17.3	565,900	15.5	5,453,900
<b>% with Trade Apprenticeships - aged 16-64</b>	3.2	3,900	2.8	8,400	4.9	6,300	5.4	8,900	3.9	27,500	4.8	156,000	3.8	1,353,700
<b>% with NVQ2 only - aged 16-64</b>	16.5	19,800	14.3	42,200	17.4	22,400	19.4	32,100	16.4	116,600	17.6	572,500	16.2	5,713,400
<b>% with NVQ1 only - aged 16-64</b>	12.6	15,200	14.6	43,100	15.4	19,800	15.8	26,200	14.7	104,300	15.3	499,200	13.9	4,882,900
<b>% with other qualifications - aged 16-64</b>	8.3	10,000	7.8	23,000	6.7	8,700	8.4	13,900	7.8	55,500	7.2	234,200	8.9	3,137,200
<b>% with no qualifications - aged 16-64</b>	7.1	8,500	10.3	30,400	7.3	9,300	6.9	11,500	8.4	59,800	8.7	283,500	12.2	4,309,100
<b>% with NVQ3+ - aged 16-64</b>	84.7	102,000	82.0	242,600	86.0	110,500	84.6	140,100	83.8	595,200	84.1	2,744,400	78.9	27,803,200
<b>% with NVQ2+ - aged 16-64</b>	72.0	86,800	67.4	199,500	70.6	90,700	68.8	113,800	69.1	490,900	68.8	2,245,200	65.0	22,920,300
<b>% with NVQ1+ - aged 16-64</b>	55.6	67,000	53.1	157,300	53.2	68,300	49.4	81,700	52.7	374,300	51.3	1,672,700	48.8	17,206,800

Source: National Statistics, Annual Population Survey Jan-Dec 2008 (APS qualifications data is updated on an annual basis. There are no quarter updates).

Qualifications data are only available for the periods Jan-Dec 05, Jan-Dec 07, Jan-Dec 08

Working age people as a % of all working age people.

Notes:

1. No qualifications: No formal qualifications held
2. Other qualifications: includes foreign qualifications and some professional qualifications
3. NVQ 1 equivalent: e.g. fewer than 5 GCSEs at grades A-C, foundation GNVQ, NVQ 1, intermediate 1 national qualification (Scotland) or equivalent
4. NVQ 2 equivalent: e.g. 5 or more GCSEs at grades A-C, intermediate GNVQ, NVQ 2, intermediate 2 national qualification (Scotland) or equivalent
5. NVQ 3 equivalent: e.g. 2 or more A levels, advanced GNVQ, NVQ 3, 2 or more higher or advanced higher national qualifications (Scotland) or equivalent
6. NVQ 4 equivalent and above: e.g. HND, Degree and Higher Degree level qualifications or equivalent

## 11. Earnings

### Median annual (Gross) earnings of full time employees (by residence) 2002 - 2009

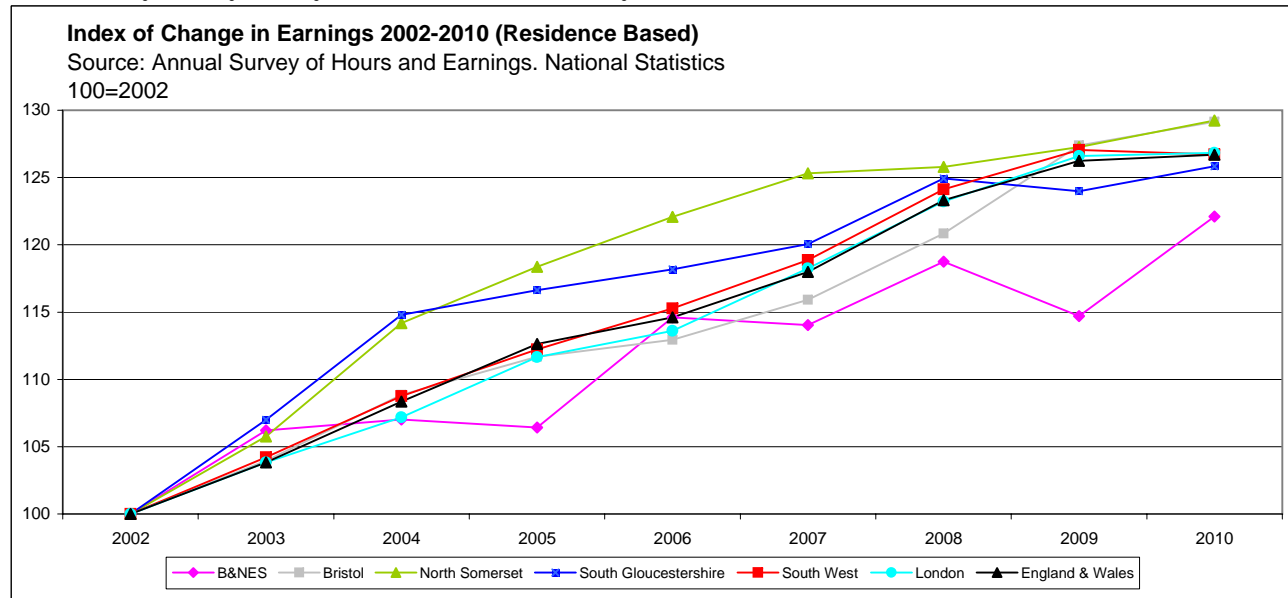
	B&NES	Bristol	North Somerset	South Gloucestershire	SW	London	England & Wales
2002	21,601	19,756	21,329	20,584	19,308	25,235	20,596
2003	22,943	20,538	22,559	22,024	20,120	26,201	21,387
2004	23,118	21,506	24,353	23,628	21,000	27,046	22,317
2005	22,988	22,064	25,246	24,007	21,667	28,177	23,197
2006	24,754	22,315	26,040	24,323	22,255	28,671	23,604
2007	24,634	22,899	26,726	24,711	22,951	29,841	24,300
2008	25,651	23,874	26,832	25,714	23,968	31,097	25,397
2009	24,776	25,166	27,146	25,522	24,531	31,948	26,000
2010	26,375	25,512	27,564	25,904	24,466	32,008	26,094

Source: Annual Survey of Hours and Earnings. National Statistics. Annual pay - Gross (£) - For full-time employee jobs: Residence-based Earnings

Notes:

\*West of England Earnings figures are the mean average of the median UA figures, all others are median. West of England figures are therefore not directly comparable to the other figures as they would appear higher.

There is no West of England Median figure. Median figures have still been used for UAs to avoid the skewing effects of extreme values



Please see Intelligence West for full Index of Change in Earnings data (including breakdown by /UA and WofE figures)

## 12. Key Sectors

### Number of employees and workplaces 2008:

	Total employees	Total workplaces
Advanced Engineering & Aerospace	12,200	200
Banking, legal & Insurance	50,700	5,100
Biotechnology	1,400	90
Creative Industries	18,900	3,160
Distribution	19,200	2,100
Environmental technologies	6,500	392
Food & Drink	4,300	121
ICT	17,662	2,700
Marine Technologies	400	30
Tourism & Leisure	15,200	1,200

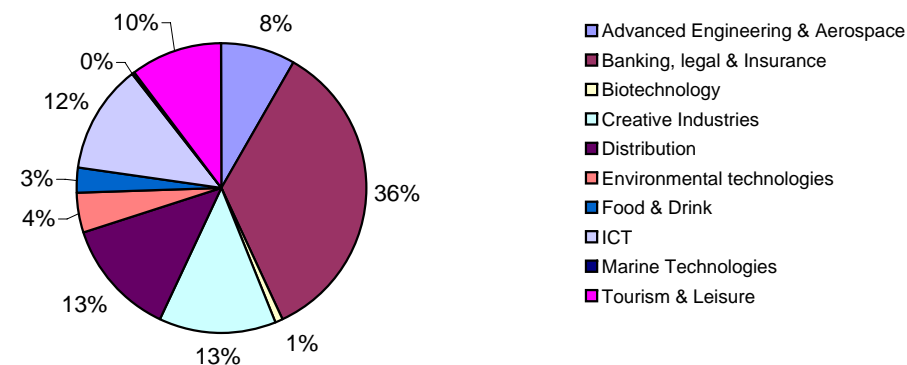
ABI 2008, Nomis®, O.N.S., © Copyright

Note: All Key Sectors excluding Banking, Legal & Insurance and Distribution are defined by SWRDA. Banking, Legal & Insurance and Distribution have been identified and defined by WEP. For a breakdown of SIC codes included in each key sector please contact Intelligence West.

Figures may not sum due to rounding (ABI data rounded to nearest 100)

### West of England Key Sectors: % of total employee numbers

Source: ABI, 2007



## 13. Productivity

### GVA per head at current basic prices (£million)

	Bristol City of	North and North East Somerset, South Gloucestershire*	West of England**	SW	England
<b>2001</b>	21,535	15,360	<b>17,784</b>	13,848	15,409
<b>2002</b>	22,799	16,546	<b>18,989</b>	14,572	16,223
<b>2003</b>	23,869	17,903	<b>20,230</b>	15,434	17,160
<b>2004</b>	24,283	18,946	<b>21,034</b>	16,213	18,020
<b>2005</b>	24,407	19,571	<b>21,480</b>	16,682	18,589
<b>2006</b>	25,375	20,463	<b>22,406</b>	17,491	19,539
<b>2007</b>	26,562	21,307	<b>23,392</b>	18,289	20,558
<b>2008</b>	27,182	21,640	<b>23,847</b>	18,682	21,049
<b>Change 2001-2008</b>	5,027	5,947	<b>5,609</b>	4,441	5,149
<b>% change 2001-2008</b>	23.3	38.7	<b>31.5</b>	32.1	33.4

Source ONS, GVA NUTS3 2009

\* Only available at NUTS level 3. North and North East Somerset, South Gloucestershire comprises of: Bath and North East Somerset, North Somerset and South Gloucestershire Unitary Authorities.

\*\* Data for West of England Calculated by West of England Partnership Office.

<sup>1</sup> The headline GVA series for this publication have been calculated using a five-period moving average.

<sup>2</sup> Estimates of workplace based GVA allocate income to the region in which commuters work.

<sup>3</sup> The GVA for Extra-Region comprises compensation of employees and gross operating surplus which cannot be assigned to regions.

## 14. Business Demography, 2009

	B&NES	Bristol	N.Somerset	S.Glos	West of England	South West	England & Wales
<b>Births of new enterprises</b>	635	1,605	730	865	<b>3,835</b>	17,945	217,355
<b>Deaths of enterprises</b>	755	1,915	910	1,000	<b>4,580</b>	22,530	258,270
<b>Count of active enterprises</b>	7,745	15,650	7,895	9,050	<b>40,340</b>	207,060	2,131,275

Source: ONS Business Demography

Note: ONS has discontinued VAT stock registrations/deregistrations. A more comprehensive set of Business demography statistics are now produced annually, released in November.

## 15. Number of VAT registered businesses by age, turnover, and employment size band

### Number of VAT registered businesses in 2010 by age of business

	Less than 2 - 3		4 - 9 Years	10 or more	
	2 Years	Years		Years	TOTAL
Bath and North East Somerset	870	895	2,085	3,220	7,070
Bristol, City of	2,005	2,150	3,810	5,200	13,165
North Somerset	930	1,010	2,060	3,050	7,050
South Gloucestershire	1,175	1,265	2,300	3,390	8,130
<b>West of England</b>	<b>4,980</b>	<b>5,320</b>	<b>10,255</b>	<b>14,860</b>	<b>35,415</b>
South West	23,395	26,180	55,325	93,035	197,935
England & Wales	276,150	277,645	530,930	802,555	1,887,280

### Number of VAT registered businesses in 2010 by turnover size band

	Turnover (£ thousand)							TOTAL
	0 - 49	50 - 99	100 - 249	250 - 499	500 - 999	1,000 - 4,999	5,000 +	
Bath and North East Somerset	1,230	1,700	2,080	925	535	455	140	7,065
Bristol, City of	2,255	3,115	3,605	1,630	1,105	1,145	310	13,165
North Somerset	1,330	1,765	1,980	880	530	460	105	7,050
South Gloucestershire	1,420	2,140	2,280	985	595	560	150	8,130
<b>West of England</b>	<b>6,235</b>	<b>8,720</b>	<b>9,945</b>	<b>4,420</b>	<b>2,765</b>	<b>2,620</b>	<b>705</b>	<b>35,410</b>
South West	39,005	46,360	56,855	25,000	14,835	12,750	3,130	197,935
England & Wales	327,415	441,915	543,085	236,970	151,045	142,760	44,090	1,887,280

### Number of VAT registered businesses in 2010 by employment size band

	Number of employees									
	0 - 4	5 - 9	10 - 19	20 - 49	50 - 99	100 - 249	250 - 499	500 - 999	1,000 +	TOTAL
Bath and North East Somerset	5,820	1,310	715	420	150	70	20	5	5	8,515
Bristol, City of	10,860	2,755	1,770	1,185	440	230	80	20	15	17,355
North Somerset	5,710	1,230	690	470	135	60	20	10	0	8,325
South Gloucestershire	6,660	1,495	855	620	235	135	35	15	10	10,060
<b>West of England</b>	<b>29,050</b>	<b>6,790</b>	<b>4,030</b>	<b>2,695</b>	<b>960</b>	<b>495</b>	<b>155</b>	<b>50</b>	<b>30</b>	<b>44,255</b>
South West	163,025	36,835	19,800	12,760	4,085	2,045	585	205	85	239,425
England & Wales	1,563,990	341,820	188,305	125,120	43,890	23,025	6,860	2,500	1,145	2,296,655

Source: ONS UK Business: Activity, Size and Location 2010 report

## 16. House Prices

### Annual mean house prices based on Land Registry data

	<b>B&amp;NES</b>	<b>Bristol</b>	<b>N.Som</b>	<b>S.Glos</b>	<b>SW</b>	<b>England &amp; Wales</b>
<b>1996</b>	83,302	59,951	69,236	66,689	69,348	72,180
<b>1997</b>	87,428	68,016	75,207	71,285	75,570	79,482
<b>1998</b>	98,405	75,566	81,227	80,859	82,110	86,500
<b>1999</b>	113,885	85,251	89,533	86,719	91,532	96,902
<b>2000</b>	142,673	96,926	105,894	101,772	106,151	108,527
<b>2001</b>	156,108	114,526	117,901	114,648	119,823	119,436
<b>2002</b>	184,108	138,979	138,395	138,642	144,935	138,370
<b>2003</b>	216,105	157,979	161,407	159,721	169,976	156,505
<b>2004</b>	234,767	171,110	182,465	177,477	191,697	178,899
<b>2005</b>	242,872	177,358	191,116	183,995	199,129	189,983
<b>2006</b>	256,152	191,687	201,331	194,176	210,639	204,235
<b>2007</b>	287,970	209,340	220,723	212,854	228,793	219,804
<b>2008</b>	276,455	198,963	212,253	205,415	222,704	217,192
<b>2009</b>	256,875	190,960	206,719	193,124	210,830	213,490

Source: CLG Live table 585

### Annual median house prices based on Land Registry data

	<b>B&amp;NES</b>	<b>Bristol</b>	<b>N.Som</b>	<b>S.Glos</b>	<b>SW</b>	<b>England &amp; Wales</b>
<b>1996</b>	66,375	50,000	58,500	57,500	57,500	57,000
<b>1997</b>	70,950	54,500	61,750	60,000	60,000	60,000
<b>1998</b>	79,000	59,000	67,500	67,500	66,950	65,000
<b>1999</b>	89,995	68,000	74,500	74,000	74,126	73,000
<b>2000</b>	110,000	77,000	87,000	86,000	85,000	80,000
<b>2001</b>	125,000	89,950	96,500	97,000	96,500	90,000
<b>2002</b>	149,950	115,500	118,500	120,000	123,000	110,000
<b>2003</b>	175,000	135,000	138,000	138,250	145,000	130,000
<b>2004</b>	187,000	145,000	159,950	155,000	165,000	150,000
<b>2005</b>	196,500	150,000	166,500	160,000	170,000	157,500
<b>2006</b>	210,000	162,500	175,000	170,000	178,650	166,500
<b>2007</b>	230,000	175,000	190,000	187,500	190,950	175,950
<b>2008</b>	220,000	169,973	185,000	180,000	185,000	170,048
<b>2009</b>	205,000	160,105	177,248	170,000	175,000	169,000

Source: CLG Live table 586

### Quarterly mean house prices based on Land Registry data

	<b>2009</b>				<b>2010</b>			
	<b>Q1</b>	<b>Q2</b>	<b>Q3</b>	<b>Q4</b>	<b>Q1</b>	<b>Q2</b>	<b>Q3*</b>	<b>Q4*</b>
<b>B&amp;NES</b>	242,162	239,144	267,490	265,450	302,956	275,261	318,954	288,292
<b>Bristol</b>	187,100	185,925	194,152	193,248	209,693	202,932	219,797	208,563
<b>N.Som</b>	196,491	197,686	214,197	209,940	216,508	217,294	224,416	218,740
<b>S.Glos</b>	177,021	183,411	202,759	199,601	212,510	206,825	220,756	206,934
<b>SW</b>	200,468	204,403	217,099	214,048	225,922	225,799	235,965	227,003
<b>England &amp; Wales</b>	197,899	202,863	223,225	219,110	233,980	230,940	245,959	232,432

Source: CLG Live table 581

\*The figures for Q4 2010 are provisional and figures for Q3 2010 have been revised.



## 17. Dwelling Completions

### Net Housing Completions

	1996/97	1997/98	1998/99	1999/00	2000/01	2001/02	2002/03	2003/04	2004/05	2005/06	2006/07	2007/08	2008/09	2009/10
B&NES	553	488	650	368	252	203	332	375	215	245	332	571	352	420
Bristol*	773	789	771	594	601	1,204	1,189	2,283	2,082	1,712	2,052	2,411	2,574	2,165
N. Somerset	633	833	862	940	782	1,066	1,206	1,265	1,058	1,253	1,132	1,474	935	772
S.Glos.	1,187	1,510	1,587	1,456	1,252	826	942	748	546	636	689	1,003	916	742
<b>W. of England</b>	<b>3,126</b>	<b>3,544</b>	<b>3,856</b>	<b>3,322</b>	<b>2,822</b>	<b>3,215</b>	<b>3,617</b>	<b>4,671</b>	<b>3,901</b>	<b>3,813</b>	<b>4,205</b>	<b>5,459</b>	<b>4,777</b>	<b>4,099</b>
<i>Bristol</i>														
<i>Student/keyworker</i>														
Cluster Flats**	20	76	14	36	65	84	52	0	0	33	0	137	99	254

Source: Unitary Authority Residential Land Surveys.

\*Bristol figures exclude cluster flats exclusively for student use.

Bristol figures may include some cluster flats for key workers and students.

\*\*Please note Bristol figures have been revised and have changed from previous publications.

## 18. Dwelling Commitments at March

	1996	1997	1998	1999	2000	2001	2002	2003	2004	2005	2006	2007	2008	2009
B&NES	2,548	2,191	1,700	1,683	1,447	2,781	2,944	2,293	2,210	2,267	6,291	6,817	2,833	1,381
Bristol*	5,180	4,908	4,700	4,725	6,362	7,013	8,963	9,207	7,811	10,371	11,639	11,186	12,510	10,256
N. Somerset	7,469	6,752	6,379	5,963	5,667	7,055	5,337	5,970	5,429	5,302	4,572	3,490	3,814	3,040
S.Glos.	7,040	5,813	4,846	4,079	7,293	7,975	7,925	7,446	9,540	10,067	9,896	9,886	10,780	10,600
<b>W. of England</b>	<b>22,237</b>	<b>19,664</b>	<b>17,625</b>	<b>16,450</b>	<b>20,769</b>	<b>24,824</b>	<b>25,169</b>	<b>24,916</b>	<b>24,990</b>	<b>28,007</b>	<b>32,398</b>	<b>31,379</b>	<b>29,937</b>	<b>25,277</b>

Source: Unitary Authority Residential Land Surveys.

Notes: \*Bristol figures include major sites only, section 106 sites (s106) and adopted local plan sites. Please note, major "other" housing sites are not included in this figure.

## 19. Employment Land Commitments and Allocations

	2010		
	Office	Industrial	Sui Generis
	Sqm	Ha	Ha
B&NES	18,600	3.5	N/A
Bristol	313,300	50.2	14.8
North Somers	138,500	18.6	N/A
South Glouce	112,600	397.9	6.5
West of Engla	583,000	470.14	21.26

Source: Individual authorities annual employment monitoring

N.B Sq m figures rounded to nearest 100; Ha figures rounded to 1.dp

## 20. Employment Land Completions at April 2010

	B&NES		Bristol		North Somerset		South Gloucestershire		West of England	
	Industrial B1c, B2, B8	Office B1a, B1b	Industrial B1c, B2, B8	Office B1a, B1b	Industrial B1c, B2, B8	Office B1a, B1b	Industrial B1b, B1c, B2, B8	Office B1a,	Industrial B1c, B2, B8	Office B1a, B1b
	Ha	Sqm	Ha	Sqm	Ha	Sqm	Ha	Sqm	Ha	Sqm
2000/2001	0.0	0	2.8	44,600	3.2	2,300	3.2	13,900	9.2	60800.0
2001/2002	0.0	700	5.4	41,900	3.2	0	7.7	14,800	16.3	57400.0
2002/2003	0.8	600	2.2	22,100	18.6	8,500	5.2	35,900	26.8	67100.0
2003/2004	0.0	2,000	8.3	6,900	6.2	5,100	4.3	3,800	18.8	17800.0
2004/2005	1.8	1,300	2.5	10,400	9.1	13,700	4.7	23,900	18.1	49300.0
2005/2006	6.9	3,900	4.1	24,700	4.6	12,100	10.9	6,200	26.5	46900.0
2006/2007	0.1	1,400	5.3	11,700	0.7	6,600	6.8	8,800	12.8	28500.0
2007/2008	6.5	3,200	29.7	52,300	1.0	27,200	13.1	12,800	50.2	95500.0
2008/2009	0.1	6,400	23.6	26,000	0.5	1,000	4.4	19,600	28.6	53000.0
2009/2010	0.0	0	2.2	77,800	0.9	3,200	35.0	20,200	38.1	101200.0
<b>Total</b>	<b>16.2</b>	<b>19,500</b>	<b>86.0</b>	<b>318,400</b>	<b>48.0</b>	<b>79,700</b>	<b>95.3</b>	<b>159,900</b>	<b>245.4</b>	<b>577,500</b>

Source: Individual authorities annual employment monitoring

N.B Sq m figures rounded to nearest 100; Ha figures rounded to 1.dp

N.B. Industrial figures for South Gloucestershire include development on new employment land, redevelopment and CofU; it does not include extensions to existing employment premises.

N.B South Gloucestershire record office completions as B1a only; whereas the other three authorities record B1a and B1b as office.

## 21. Travel to Work 2001

### Persons commuting between Unitary Authorities in West of England and England & Wales

	IN	OUT	NET	IN	OUT	NET	IN	OUT	NET	IN	OUT	NET	IN	OUT	NET
	B&NES	B&NES	B&NES	Bristol	Bristol	Bristol	N.Som	N.Som	N.Som	S.Glos	S.Glos	S.Glos	WoE	WoE	WoE
<b>B&amp;NES</b>				9,146	4,005	5,141	1,126	1,091	35	4,048	4,259	-211			
<b>Bristol</b>	4,005	9,146	-5,141				5,616	18,963	-13,347	27,068	36,436	-9,368			
<b>N.Som</b>	1,091	1,126	-35	18,963	5,616	13,347				5,863	2,633	3,230			
<b>S.Glos</b>	4,259	4,048	211	36,436	27,068	9,368	2,633	5,863	-3,230						
<b>Outside WoE</b>	<b>14,715</b>	<b>9,190</b>	<b>5,525</b>	<b>18,859</b>	<b>7,872</b>	<b>10,987</b>	<b>6,508</b>	<b>5,812</b>	<b>696</b>	<b>15,489</b>	<b>8,438</b>	<b>7,051</b>	<b>55,571</b>	<b>31,312</b>	<b>24,259</b>
<b>TOTAL</b>	24,070	23,510	560	83,404	44,561	38,843	15,883	31,729	-15,846	52,468	51,766	702	<b>55,571</b>	<b>31,312</b>	<b>24,259</b>
<b>Lives &amp; Works in Area</b>	56,390			132,008			56,659			75,679			<b>320,736</b>		

2001 Census Origin / Destination Tables Special Workplace Statistics (Local Authority level)

Table SWS103 Method of travel to work by sex

CROWN COPYRIGHT RESERVED

Table population: All persons aged 16 to 74 in employment